

14th Annual

NSIP

National Sheep
Improvement
PROGRAM

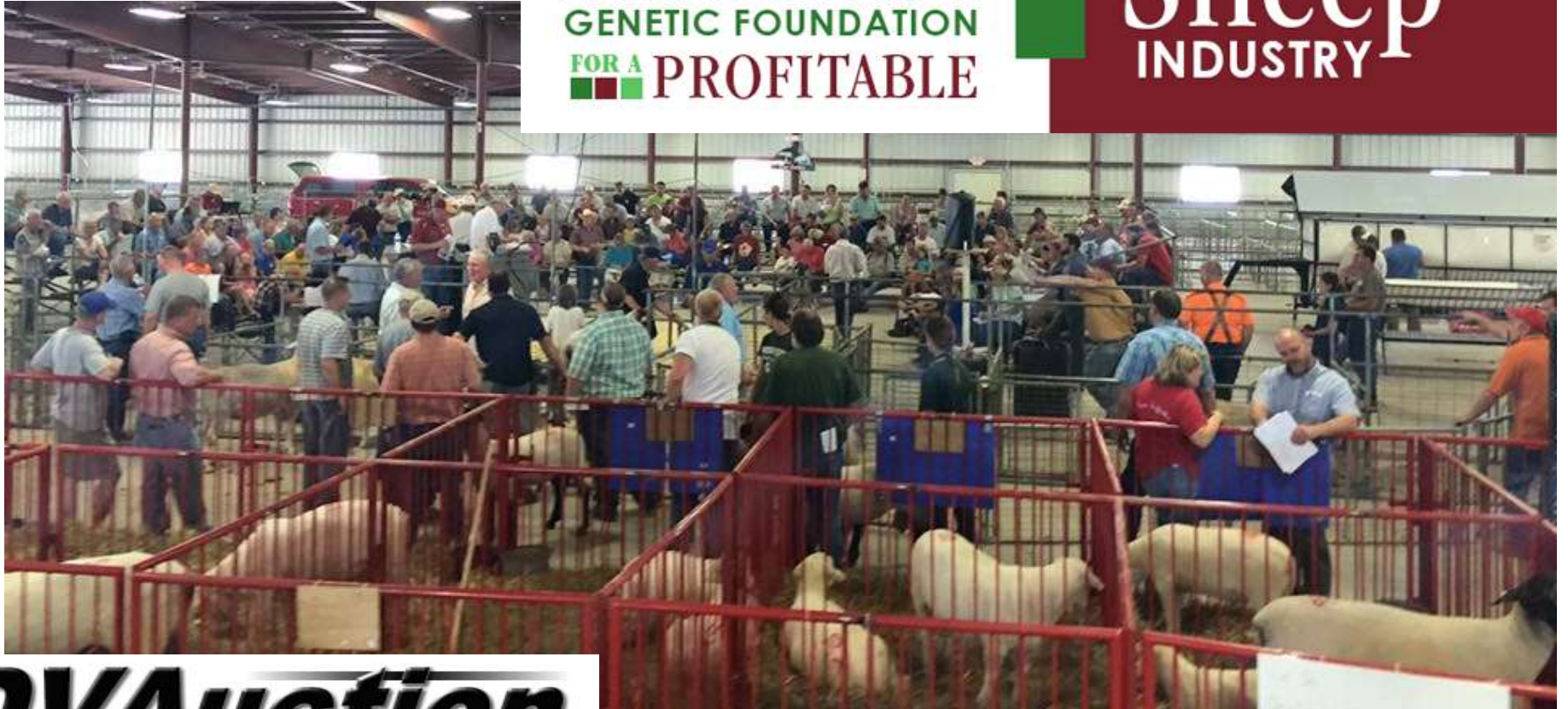
Center of the Nation NSIP Sheep Sale

July 27, 2019

Clay County Fairgrounds – Spencer, IA

America's
GENETIC FOUNDATION
FOR A PROFITABLE

Sheep
INDUSTRY



DVAuction
Broadcasting Real-Time Auctions

Center of the Nation NSIP Sheep Sale

1:00 p.m. July 27, 2019

Clay County Fairgrounds, Spencer, IA

Sale Manager and Contact: Rusty Burgett (515)-708-8850

Auctioneer: Scott Courtney,

Courtney Sales, LLC (563) 380-1318

Sale Day Phone: Rusty Burgett (515) 708-8850

Offering 181 Head of the Top NSIP Sheep from across the United States.

Sale Location: Clay County Fairgrounds- Spencer, IA
1401 4th Ave W. Spencer, IA in the livestock pavilion located in
the center of the fairgrounds.

Hotel Accommodations: AmericInn Hotel (712) 262-7525,
EconoLodge (712) 262-6100, Days Inn (712) 580-4077,
Holiday Inn Express (712) 580-200

Inspection of Sheep: Sheep available for viewing starting at
4:00 p.m. Friday at the fairgrounds.

Health: All animals will be accompanied by an interstate
health paper.

Terms: Cash or Check. All sheep must be paid for before
leaving the grounds.

Liability: All persons attending this sale do so at their own
risk, legal or otherwise for their safety or the behavior of the
animals. The owners, auction service and sale staff assume no
liability for property loss or any accidents that may occur.

Announcements: From the block will take precedence over
the catalog. Buyers unable to attend may send their bids to
field representative or auctioneer.

Dear Sheep Producers,

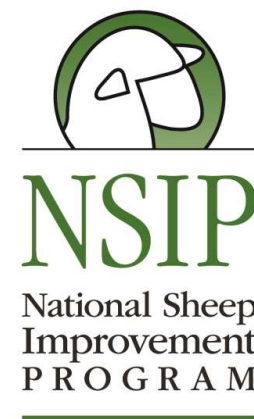
On behalf of the National Sheep Improvement Program
and the sale committee, we would like to invite you to our 14th
annual Center of the Nation NSIP Sale! This sale will be a great
opportunity to access proven genetics that have been selected for
increased productivity and profitability. Sheep can be found to
improve lambing and weaning rates along with growth rates, and
increase carcass cutability. There will truly be a sheep for
everyone.

We hope you can benefit from the educational buyers
workshop preceding the sale, which will also be a great
networking opportunity. Interest in NSIP and sheep selected for
productivity improvement has never been higher. This is your
chance to see what the buzz is about and take home genetics
chosen for one purpose: improving your bottom line.

Thanks to everyone who helped make this sale materialize
and being a part of "America's Genetic Foundation for a Profitable
Sheep Industry"!

Sincerely,
Rusty Burgett
NSIP Program Director

44 Polypay Rams
45 Polypay Ewes
32 Suffolk Rams
12 Suffolk Ewes
18 Hampshire Rams
5 Hampshire Ewes
12 Dorset Rams
4 Rambouillet Rams
3 Texel Rams
1 Katahdin Ram



NSIP Sale Consignors		NSIP Sale Consignors	
Polypay Division		Suffolk Division (Cont'd)	
	Lot #'s		Lot #'s
Hidden Valley Polypays.....	1-6	Reau Suffolks.....	128-130
Lambshire Polypays.....	7-8	5Bs Suffolks.....	131-132
Pharo Polypays.....	9-10	Culham & Stevens.....	133-139
Meinders Stock Farm.....	11-16	Dry Sandy Sheep Co.....	140-148
Follow One Farms.....	17	JMG Suffolks.....	149-152
Henke Family Polypays.....	18-25	Russell Sheep Co.....	153-160
Schauer Sheep Co.....	26-27	R & R Suffolks.....	173
Pro-Ewe Genetics.....	28-32	SAMM Division	
Shady Lane Farm.....	33-37	Kitzan Sheep.....	161
University of Wisconsin.....	38-42D	JHK Sheep.....	162-163
Hausser Polypays.....	43-46	Rambouillet Division	
Patriot Polypays.....	47-48	Benz Rambouillet.....	164-165
Big Prairie Polypays.....	49-55	Tailwind Farm.....	166-167
Neaton Polypays.....	56-57	Texel Division	
JCC Polypays.....	58-59	West Virginia University.....	168-169
Diamond K Sheep Co.....	60-66B	Portland Prairie.....	170
Refshaw Ranch.....	67-73	Katahdin Division	
Hoiten Polypays.....	74-78	Doyle Weaver Katahdins.....	171
CAK Polypays.....	79-82	Siremax Division	
Dorset Division		Siremax.....	172
PR Performance Dorsets.....	83-86	New this year! NSIP Searchable Database links in the catalog! The new online searchable NSIP database is available at www.nsipsearch.nsip.org . For any entry, simply click “more info” or type in any 16-digit NSIP ID number into the search field on the database site to find more details on any animal. This unique tool was developed with funding from American Sheep Industry’s Let’s Grow Program.	
Twin Maple Farm.....	87		
Meeuwse Farms, LLC.....	88-92		
Virginia Tech.....	93-96		
Hampshire Division			
Helming Hampshires.....	97-98C		
University of Wisconsin-Madison.....	99-101		
Hayden’s Hamps.....	102-104		
Iowa State University.....	105-209		
Roembke Hampshires.....	110-115		
Drewry Farms.....	116-117		
Suffolk Division			
Blonquist Bros & Sons.....	118		
Mint Gold Ranch.....	119-127		

Estimated Breeding Values

Estimated breeding values (EBVs) quantify the genetic merit of a sheep for a particular trait. They express the expected deviation of performance of an animal for each trait. Each EBV consists of an age category and a measurement type. In the following example, if the ram has an EBV of 3.0 kg for weaning weight (WWT) he has the genetic potential to be 3 kg heavier at weaning compared to others in the breed

and his lambs should be 3.0 pounds heavier at weaning when we convert to pounds and since each lamb inherits half it's genetics from its sire.



EBVs available:

Birth Weight (BWT) estimates direct genetic effect on weight at birth. Positive selection on BWT EBVs is anticipated to increase birth weight and have correlated positive effects on early lamb survival especially in twins and triplets. Negative pressure is expected to decrease birth weights and lambing difficulty if oversized lambs are a common problem.

Maternal Weaning Weight (MWWT) estimates genetic merit for mothering ability and mainly reflects differences in ewe milk production. Selecting for high MWWT is expected to increase milk production and overall mothering ability of ewes which will reflect in increased pounds of lamb weaned.

Weaning Weight (WWT) provides an estimate of preweaning growth potential and will receive positive selection pressure in most flocks due to it's impact on pounds of lamb weaned per ewe exposed and overall profitability.

Post Weaning Weight (PWWT) reflects the genetic potential for lambs to grow after weaning based on both pre and post weaning data. Selecting for PWWT will favor individuals with rapid growth to market weight.

Number of Lambs Born (NLB) expresses the genetic potential for prolificacy and is reported in a percentage (%). If a ram has 26% NLB EBV, he should sire daughters that will have 26% more lambs than the average or if he sires 100 daughters, they will drop 26 more lambs compared to average.

Number of Lambs Weaned (NLW) evaluates combined effects of prolificacy and lamb survival and is also expressed as a percentage. If a ram with NLW EBV of 12% sires 100 daughters, those daughters will wean 12 additional lambs compared to average.

USA Maternal Index combines NLB, NLW, MWWT and WWT into one, easy to use number. Positive selection will increase multiple maternal traits at one time.

Post Weaning Eye Muscle Depth (PEMD) estimates the genetic potential for muscling. Positive selection pressure will increase carcass cutability and are estimated based on Ultrasound measurements.

Post Weaning Fat (PFAT) expresses the genetic potential for carcass fatness over the loin at the 12th and 13th ribs. Used in conjunction with PEMD, carcass composition and quality can be improved.

Carcass Plus (Carc+) combines WWT, PWWT, PEMD and PFAT into one, easy to use selection index. Positive selection pressure will increase growth rates and muscling while decreasing carcass fat.

Weaning and Post Weaning Fecal Egg Count (W/ PFEC) shows the genetic potential to resist internal parasites and is expressed as a percentage of reduction. *Negative* pressure will increase genetic resistance to parasites.

A NEW DIRECTION IN SHEEP BREEDING

Clay County Fairgrounds, Spencer, Iowa
Held in conjunction with the NSIP Center of the Nation Sale

JULY 26-27, 2019

A **SUFFOLK**  PROGRAM

Funded by



Sponsored by



SEEDSTOCK BREEDERS Friday, July 26th, 2pm

Friday sessions will educate seedstock breeders on quantitative genetics. Participants will gain an understanding of the needs of the commercial industry and the role terminal sires can play. Registration begins at 1:30 pm.

Utilizing Quantitative Genetics

Learn about breeding values and what they mean for your flock in easy to understand terms. You don't need to be a numbers cruncher to use EBV's!

Dr. Dan Morrical, Production Advisor, Premier 1 Supplies, Retired Sheep Specialist, Iowa State University

National Sheep Improvement Program Searchable Data Base Demonstration

Take a test drive of the free, online tool that can be used by anyone.

Rusty Burgett, Director, NSIP

Breeding Terminal Sires to Serve the Needs of the Commercial Industry?

Learn what commercial producers are looking for in selecting rams for their operations.

Dr. Dan Morrical

Break - Sponsored by Reau Suffolks

Breed Improvement Progress – Lessons Learned Across the Sheep Industry

Examples of real progress that has been made through breeds enrolled in the National Sheep Improvement Program to improve performance and production.

Dr. Ron Lewis, Professor, Animal Breeding and Genomics, University of Nebraska

Highlights from the Leading Edge Project

Hear about the on the ground research taking place on the Mickel Brothers Sheep Ranch in Utah that followed 1400 lambs from birth to processing at Superior Farms

Dr. Ron Lewis

Lamb Dinner - Sponsored by USSA, Dry Sandy Sheep Co., Superior Farms, Center of the Nation Suffolk Consignors

Attendees will join Center of the Nation Sale consignors for dinner.

Hands-on Live Ram Evaluation

What can we learn from visual appraisal and what can we learn from EBV's.

Dr. Dan Morrical & NSIP Suffolk breeders

WHAT IS NSIP?

The National Sheep Improvement Program provides predictable, economically important genetic evaluation information. Using a process similar to that used by nearly all other livestock species to aid in genetic selection, NSIP develops Estimated Breeding Values (EBVs) which sheep producers can use to select animals for important traits, including productivity, quality and flock health.

THANK YOU TO OUR SPONSORS!



LET'S GROW



Superior Farms



Center of the Nation
Suffolk Consignors

Improving flock performance • Increasing profitability • Impacting the value of American lamb

COMMERCIAL PRODUCERS

Saturday, July 27th, 9:30am

Saturday morning session is targeted at commercial producers who want to add profitability to their operations. Registration begins on Saturday at 9 am with continental breakfast sponsored by Premier 1 Supplies.

Sire Selection for Commercial Flocks – Crossbreeding and Using Estimated Breeding Values (EBV's)

Learn how to select terminal sires and use the numbers to move your operation in the right direction to achieve your goals.

Dr. Dan Morrical

Commercial Producer Panel Discussion- Shawn Capouch, Mark Hoogendoorn & Mark Van Roekel

Hear first-hand from commercial producers how they use rams with EBV's in their operations.

Shawn Capouch, Blair, Wisconsin

Mark Hoogendoorn, Lester, Iowa

Mark Van Roekel, Orange City, Iowa

PROGRAM SPEAKERS



Dr. Dan Morrical serves as the Production Advisor with Premier 1 Supplies and provides guidance to sheep producers on management and production issues. Dr. Morrical retired in 2017 after a 33-year career with Iowa State University as the sheep specialist where he was responsible for educational programs in all areas of sheep production include nutrition, genetics, marketing and management.

Dr. Ron Lewis is a Professor of Animal Breeding and Genomics at University of Nebraska – Lincoln. Dr. Lewis serves as the Technical Advisor to the National Sheep Improvement Program (NSIP), the primary provider of genetic evaluation services in wool, maternal and hair sheep breeds in the U.S.



Shawn Capouch of Blair, Wisconsin has a 250 ewe commercial flock with operations in Wisconsin and Missouri lambing in May and June. The lambs are raised on grass and sold as feeders weighing 85-90 pounds in September. The flock utilizes Dorset and Suffolk genetics to create a high quality, growthy, crossbred feeder lamb.

Mark Hoogendoorn is a full-time shearer, runs a flock of 200 Polypay ewes in Lester, Iowa and is currently transitioning the flock to accelerated lambing. Over the past 10 years, he has utilized NSIP data to increase productivity across his flock with both maternal and terminal sire selection.



Mark Van Roekel of Orange City, Iowa has an operation of 500 ewes including commercial and registered Polypays and Dorsets. He is a member of Pipestone Lamb and Wool and markets lambs on a grade and yield basis. He has used NSIP rams and EBV's when selecting both maternal and terminal sires since 2009 to increase value in his operation.

Unable to Attend?

Will be broadcast live online!

For more info:
www.suffolks.org



THANK YOU TO OUR SPONSORS!



Center of the Nation
Suffolk Consignors

JOIN US!

REGISTRATION

Preregistration is recommended by July 17th. Please contact the United Suffolk Sheep Association by phone (641.684.5291) or email (info@suffolks.org).

COST

This Suffolk U program is free.

LOCATION

Programs will be held in the air conditioned 4-H Auditorium at the Clay County Fairgrounds in Spencer, Iowa.

WIN SALE CREDIT!

At the conclusion of each day a name will be drawn for a \$100 certificate which can be used towards the purchase of any ram in the 2019 Center of the Nation Sale. Must attend the program and complete the program evaluation to be entered in the drawing.

MORE INFO

Visit the United Suffolk Sheep Association website for a more detailed schedule - www.suffolks.org



Thank you to the **United Suffolk Sheep Association**
for sponsoring the Friday night consignor's
dinner.

DVAuction
Broadcasting Real-Time Auctions

Can't make it to the sale? View and bid online at <https://www.dvauction.com/events/91006> .
Make sure to register to bid before the sale begins.



Hidden Valley Polypays

Glen & Chris Jones
4750 N 450 E
Rochester, IN 46975
574-204-3442

Glenjones1948@gmail.com

**Lot
1-6**

Polypay Division

1

HV 929

NSIP ID # 620068-2019-HV9029

Born: 2/6/2019

Polypay

Ram

JCC 617

JCC 810

JCC 307

U of WI 15322

HV 6037

HV 3446

EBVs						
WWT	MWWT	PWWT	NLB	NLW	US Mat	MAT\$
2.25	2.09	4.91	8	23	116	142

Well Balanced EBVs and milk above 2.0

[More Info](#)

2

HV 9115

NSIP ID # 620068-2019-HV9115

Born: 3/6/2019

Polypay

Ram

U ov WI 15322

HV 8126

HV 7157

JCC 625

HV 7157

HV 6061

EBVs						
WWT	MWWT	PWWT	NLB	NLW	US Mat	MAT\$
2.68	1.82	6.08	19	28	117	153

-30 PFEC. Reproduction, Growth and Parasite Resistance in one package

3

HV 9155

NSIP ID # 620068-2019-HV9155

Born: 3/17/2019

Polypay

Ram

JCC 617

JCC 810

JCC 307

U of WI 15322

HV 7072

HV 3307

EBVs						
WWT	MWWT	PWWT	NLB	NLW	US Mat	MAT\$
2.79	2.03	6.54	9	23	116	148

EBVs similar to HV 9115 but from a different ram line

[More Info](#)



Polypay Division

4

HV 9094

NSIP ID # 620068-2019-HV9094

Born: 2/28/2019

Polypay

Ewe

JCC 617

JCC 810

JCC 307

U of WI 15322

[More Info](#)

HV 7073

HV 3307

EBVs						
WWT	MWWT	PWWT	NLB	NLW	US Mat	MAT\$
2.43	2.01	5.08	8	23	116	141

All 3 ewes are fraternal siblings. All born and raised twins out of young dams. EBVs well above breed average.

5

HV 9098

NSIP ID # 620068-2019-HV9098

Born: 3/3/2019

Polypay

Ewe

JCC 617

JCC 810

JCC 307

U of WI 15322

[More Info](#)

HV 7021

HV 3559

EBVs						
WWT	MWWT	PWWT	NLB	NLW	US Mat	MAT\$
2.46	1.47	5.54	14	26	116	141

All 3 ewes are fraternal siblings. All born and raised twins out of young dams. EBVs well above breed average.



6

HV 9123

NSIP ID # 620068-2019-HV9123

Born: 3/7/2019

Polypay

Ewe

JCC 617

JCC 810

JCC 307

U of WI 15322

[More Info](#)

HV 7107

HV 3433

EBVs						
WWT	MWWT	PWWT	NLB	NLW	US Mat	MAT\$
2.69	2.01	6.26	8	21	115	145

All 3 ewes are fraternal siblings. All born and raised twins out of young dams. EBVs well above breed average.

Polypay Division



Lambshire Polypays

John Anderson
10131 Munson Road
Shreve, OH 44676
330-749-9053

**Lot
7-8**

info@lambshirepolypays.com

7

Lambshire L8259N

NSIP ID # 620062-2018-L8259N

Born: 12/20/2018 **Polypay** Ram

Hausser 16049

Hausser 17003

Hausser 14052
Lambshire L5203T

Lambshire L7145T

Lambshire L4234M

EBVs

WWT	MWWT	PWWT	NLB	NLW	PFEC	US Mat
2.61	1.42	6.95	11.3	17.5	-45.6	112

Thick December 2018 triplet born and raised. His dam is marked to lamb again in October 2019.

8

Lambshire 8273Q

NSIP ID # 620062-2018-L8273Q

Born: 12/22/2018 **Polypay** Ram

Misty Hollow Y22

Lambshire L4040Q

Lambshire L1189X
Pharo 14426K

[More Info](#)

Lambshire L6156K

Lambshire L3072W

EBVs

WWT	MWWT	PWWT	NLB	NLW	PFEC	US Mat
2.44	1.69	6.4	6.0	14.0	-62.4	111.36

December 2018 Twin. A long bodied ram, his dam also raised triplets in April 2018 and she is marked to lamb in October 2019.

What is the National Sheep Improvement Program?

NSIP is a non-profit organization of sheep producers and animal scientists that started in 1986 to develop a tool to improve productivity of U.S. sheep industry. The program analyzes production records and converts them into an easy-to-use decision making tool that estimates the genetic potential of an animal. NSIP is run by a volunteer board of producers and industry professionals including geneticists, animal scientists and a program director. Estimated Breeding Values can be calculated for any breed that wishes to participate.



Pharo Polypays

Brett Pharo
12266 Cherry Avenue
Rapid City, MI 49676
231-564-1540
brettpharo@gmail.com

**Lot
9-10**

9 Pharo 18938

NSIP ID # 620013-2018-18938E

Born: 4/17/2018

Polypay

Ram

Uncompahgre 5199

Uncompahgre 6140

Uncompahgre 20384

Pharo 14426K

[More Info](#)

Pharo 15659K

Pharo P12281

EBVs						
WWT	MWWT	PWWT	NLB	NLW	PFEC	US Mat
2.3	1.5	4.6	18.2	19.4	29.5	112.6

These rams will be coming directly off pasture. They were raised solely on mom's milk and grass and wintered on hay.



Polypay Division



10 Pharo 18010

NSIP ID # 620013-2018-18010E

Born: 4/29/2018

Polypay

Ram

Uncompahgre 5199

Uncompahgre 6140

Uncompahgre 20384

Lambshire L2136C

[More Info](#)

Pharo 14425C

Pharo 7731

EBVs						
WWT	MWWT	PWWT	NLB	NLW	PFEC	US Mat
3.1	1.9	6.9	17.0	17.8	119.6	113.4

These rams will be coming directly off pasture. They were raised solely on mom's milk and grass and wintered on hay.



Meinders Stock Farms

Zach and Jake Meinders
42645 20th St
Buffalo Center, IA 50424
515-320-3835
meinders2@hotmail.com

Lot
11-16

11 MSF 8125

NSIP ID # 620121-2018-008125

Born: 10/15/2018

Polypay

Ram

Uncompahgre 6152

Uncompahgre 7136

Uncompahgre 385
CAK K3047A

[More Info](#)

Hausser 15016

Hausser 12020

EBVs

WWT	MWWT	PWWT	NLB	NLW	US Mat
2.3	2.0	5.4	11	17	113.2

RR Twin. 8125 is one of the best looking rams we have ever raised. His dam lambed last January and again in October. Her ram lamb sold for \$1200 last year in Spencer. He is high milk, outcross and is the highest growth son of Uncompahgre 7136.

Polypay Division



Polypay Division

12

MSF 9011

NSIP ID # 620121-2019-009011

Born: 1/22/2019

Polypay

Ram

U of WI 10190

U of WI 15319

U of WI 10416

Uncompahgre 5199

Uncompahgre 6175

Uncompahgre R326

EBVs					
WWT	MWWT	PWWT	NLB	NLW	US Mat
3.4	1.2	7.5	26	32	117.2

RR Triplet. 9011 is a balanced EBV ram with excellent phenotype. Very solid 7.5 PWWT, 32 NLW and 117.2 Index. Dam came from Uncompahgre.



13

MSF 9015

NSIP ID # 620121-2019-009015

Born: 1/23/2019

Polypay

Ram

U of WI 10190

U of WI 15319

U of WI 10416

JCC 437

MSF 7055

MSF 6097

EBVs					
WWT	MWWT	PWWT	NLB	NLW	US Mat
3.5	1.6	7.4	21	30	117.7

RR Twin. Another balanced EBV son of UW 15319. Dam is a JCC 437 daughter...the 437 bloodline is the highest indexing bloodline in the breed right now!

[More Info](#)

Polypay Division



Lots 14-16

14

MSF 8151

NSIP ID # 620121-2018-0080151

Born: 12/8/2018

Polypay

Ewe

U of WI 10190

U of WI 15319

U of WI 10416

Uncompahgre B341

Uncompahgre 7178

Uncompahgre B306

EBVs

WWT	MWWT	PWWT	NLB	NLW	US Mat
2.9	1.0	6.2	29	29	115.3

Late fall ewe lamb with super high NLB and NLW. Outcross on the ewe side of the pedigree.

15

MSF 8152

NSIP ID # 620121-2018-0080152

Born: 12/12/2018

Polypay

Ewe

U of WI 10190

U of WI 15319

U of WI 10416

Uncompahgre 5199

Uncompahgre 6171

Uncompahgre B349

EBVs

WWT	MWWT	PWWT	NLB	NLW	US Mat
3	.6	6.2	32	28	113.7

Late fall ewe lamb with super high NLB and NLW. Outcross on the ewe side of the pedigree.

[More Info](#)

[More Info](#)

Polypay Division

16

MSF 8153

NSIP ID # 620121-2018-0080153

Born: 12/12/2018

Polypay

Ewe

U of WI 10190

U of WI 15319

U of WI 10416

Uncompahgre 5199

Uncompahgre 6171

Uncompahgre B349

[More Info](#)

EBVs					
WWT	MWWT	PWWT	NLB	NLW	US Mat
2.7	.6	5.3	32	28	113.5

Late fall ewe lamb with super high NLB and NLW. Outcross on the ewe side of the pedigree.

Maternal Traits in NSIP

For most sheep producers, profit is determined by pounds of lamb sold per ewe exposed. Therefore, selection of maternal genetics should be based on maximizing this value. Number of Lambs Born(NLB) and Number of Lambs Weaned(NLW) indicate the prolificacy of female progeny and lamb survivability. Maternal Weaning Weight (MWWT) indicates the dam's contribution to weaning weight or milk production and mothering ability. Selecting for US Maternal Index and/or Maternal\$ Index will increase both the number of lambs born and growth rates of lambs, thus improving pounds of lamb weaned per ewe!



Follow One Farms

Caroline Scheffert

41253 State Highway 13

Waseca, MN 56093

507-461-6088

followonefarms@gmail.com

**Lot
17**

17

Follow One 0010

NSIP ID # 620143-2018-000010

Born: 3/7/2018

Polypay

Ram

Big Prairie 208

Big Prairie 536

U of WI 12424

Henke 5062Y

[More Info](#)

U of WI 16528

U of WI 11366

EBVs					
WWT	MWWT	PWWT	NLB	NLW	US Mat
0.1		0.7	9.2	11.5	105.6

Thick built yearling ram. Used on white face ewe lambs for 2019 lambing. Lambs are smart and pop up quick to nurse. Spring born, both parents are natural Fall born genetics.



Polypay Division



Henke Family Polypay

Anthony, Amber, Eli, Addy & Mikaylee Henke
27545 Hwy Y
Princeton, MO 64673
660-748-5742
henkefarms@gmail.com

**Lot
18-25**

18 Henke E8080T

NSIP ID # 620075-2018-E8080T

Born: 1/28/2018

Polypay

Ram

WA 1041T

K6108T

K0405K

BX9051

E2046M

ECP 936

EBVs

WWT	MWWT	PWWT	NLB	NLW	US Mat	Mat\$
2.65	1.85	6.74	39	32	117.9	152.6

We were fortunate to be able to get the Elm Creek Polypay flock moved from Truman, MN to Princeton, MO last year. ECP has been raising top sort Polypays since the beginning of this sale. We were able to get some nice young herd sires with the ewes. E8080T was slated for CNS 2018. We have been able to save several progeny of 8080T and have decided to put him in the 2019 sale. Here is a chance to buy a top sire from an original NSIP flock.

[More Info](#)

19 Henke H9061T

NSIP ID # 620098-2019-H9061T

Born: 1/26/2019

Polypay

Ram

K6108T

E8040T

E4039G

L2269G

E4040G

ECP 925

EBVs

WWT	MWWT	PWWT	NLB	NLW	US Mat
4.5	1.98	11.34	32.7	22.9	115.99

This is a ram lamb out of a young Elm Creek sire that is showing the ability to put some growth into his progeny. H9061T has top NSIP growth numbers but don't overlook his maternal traits. His dam was consistently a top producer at ECP and continued on in Missouri this year.

[More Info](#)

20 Henke H9188T

NSIP ID # 620098-2019-H9188T

Born: 2/4/2019

Polypay

Ram

K6108T

E8040T

E4039G

H5103B

H7005B

H14002

EBVs

WWT	MWWT	PWWT	NLB	NLW	US Mat
4.63	2.01	12.02	15.8	16.4	114.13

Another ram lamb out of 8040T and a good young ewe at HFP. 9188's dam has weaned 304 pounds of lamb in 2 lambings. This ram is from a ewe line that gives his maternal numbers the potential to improve as well. 9188 reminds me of a Y line ram that U of WI bought a few years back that improved every year and had some popular sons at the 2018 CNS.

[More Info](#)

Polypay Division

21 Henke H9008Y –Pen of ewes

NSIP ID # 620098-2019-H9008Y

Born: 1/20/2019 Polypay Ewe

WP 0255

HF 1321

WC 0531

[More Info](#)

L2269G

E4025G

E2046M

EBVs					
WWT	MWWT	PWWT	NLB	NLW	US Mat
2.62	1.32	6.78	39	30	116.08

This is a very nice set of ewe lambs that could get your flock linked in to some proven NSIP genetics. All of these ewe lambs have good maternal numbers as well as excellent WW and PWWT.

22 Henke H9009C –Pen of ewes

NSIP ID # 620098-2019-H9009C

Born: 1/21/2019 Polypay Ewe

E6025C

HF F0746C

F0500Y

[More Info](#)

W5023G

H6016G

HF1220

EBVs					
WWT	MWWT	PWWT	NLB	NLW	US Mat
3.13	1.6	8.18	20	23	114.6

23 Henke H9034Y –Pen of ewes

NSIP ID # 620098-2019-H9034Y

Born: 1/24/2019 Polypay Ewe

WP 0255

HF 1321

WC 0531

[More Info](#)

W5023G

H6022G

WP0232

EBVs					
WWT	MWWT	PWWT	NLB	NLW	US Mat
3.8	1.6	9.0	39	22	113.98

24 Henke H9074Y –Pen of ewes

NSIP ID # 620098-2019-H9074Y

Born: 1/27/2019 Polypay Ewe

WP0255

HF1321

WC 0531

[More Info](#)

L4231M

K6057M

K5001X

EBVs					
WWT	MWWT	PWWT	NLB	NLW	US Mat
2.4	1.22	5.78	40	27	114.09

25 Henke H9216T –Pen of ewes

NSIP ID # 620098-2019-H9216T

Born: 2/9/2019 Polypay Ewe

K6108T

E8080T

E2046M

[More Info](#)

H5103B

H7063B

H6007G

EBVs					
WWT	MWWT	PWWT	NLB	NLW	US Mat
2.89	1.92	7.18	22	19	113.83

Polypay Division



Schauer Sheep Company

Christopher Schauer
104 Hwy 12 W
Hettinger, ND 58639
701-567-3582
chris_schauer@yahoo.com

Lot
26-27

26 SS 19005

NSIP ID # 620102-2019-SS9005

Born: 2/15/2019

Polypay

Ram

Uncompahgre 6148

JCC 170743

JCC 150550
CAK K5004W

[More Info](#)

Schauer SS1617

Schauer SS1404

EBVs						
WWT	MWWT	PWWT	NLB	NLW	US Mat	Mat\$
2.0	1.7	4.5	16	23	114.4	140.7

RR buck lamb that will be big boned and structurally sound.

27 SS 19015

NSIP ID # 620102-2019-SS9015

Born: 3/5/2019

Polypay

Ram

Uncompahgre 6148

JCC 170743

JCC 150550
CAK K5004W

[More Info](#)

Schauer SS1706

Schauer SS1330

EBVs						
WWT	MWWT	PWWT	NLB	NLW	US Mat	Mat\$
1.9		4.1	13	21	113.4	134.8

RR buck lamb that will be big boned and structurally sound.



Pro-Ewe Genetics

Kyle Hurley and Jake Rouse
4548 400th Ave
Curlew, IA 50527
712-480-0881
proewegenetics@gmail.com

Lot
28-32

28 Pro-Ewe 19003

NSIP ID # 620151-2019-019003

Born: 1/30/2019

Polypay

Ram

Henke 1321

Freking FO-591Y

Elm Creek 1112S
Lambshire L6037A

[More Info](#)

Uncompahgre 8102

Uncompahgre R340

EBVs					
WWT	MWWT	PWWT	NLB	NLW	US Mat
2.6	1.6	6.4	34	25	114.6

This ram has impressed us from day one. His dam was a ewe lamb that lambed at 11 months of age and weaned 115 pounds of lambs at 55 days. He was born and raised in a commercial sheep production operation. Don't miss this opportunity to combine the great "Y" bloodline with the reputable Uncompahgre genetics.

Polypay Division

29

Pro-Ewe 19001

NSIP ID # 620151-2019-019001

Born: 1/30/2019

Polypay

Ewe

Henke 1321

Freking FO-591Y

Elm Creek 1112S

Lambshire L6037A

[More Info](#)

Uncompahgre 8137

Uncompahgre X030

EBVs

WWT	MWWT	PWWT	NLB	NLW	US Mat
2.0	1.4	4.9	30	24	113.6

We want to thank Bill and Helen Hardman for setting us up with such a nice set of ewe lambs last summer as our starter flock of purebred Polypays. We have bought a couple more groups of ewe lambs this summer so we are offering some of our raised ewe lambs on the sale. If we didn't have so many ewe lambs, these girls would be in our replacement pen.

30

Pro-Ewe 19002

NSIP ID # 620151-2019-019002

Born: 1/30/2019

Polypay

Ewe

Henke 1321

Freking FO-591Y

Elm Creek 1112S

Lambshire L6037A

[More Info](#)

Uncompahgre 8137

Uncompahgre X030

EBVs

WWT	MWWT	PWWT	NLB	NLW	US Mat
2.6	1.4	5.7	30	24	113.9

31

Pro-Ewe 19008

NSIP ID # 620151-2019-019008

Born: 2/6/2019

Polypay

Ewe

Hausser 16045

Hausser 17035

Hausser 12020

Lambshire L6037A

[More Info](#)

Uncompahgre 8123

Uncompahgre 5102

EBVs

WWT	MWWT	PWWT	NLB	NLW	US Mat
1.6	1.3	3.9	25	24	113.1

32

Pro-Ewe 19010

NSIP ID # 620151-2019-019010

Born: 2/7/2019

Polypay

Ewe

Henke 1321

Freking FO-591Y

Elm Creek 1112S

Lambshire L6037A

[More Info](#)

Uncompahgre 8121

Uncompahgre 5198

EBVs

WWT	MWWT	PWWT	NLB	NLW	US Mat
1.8	1.4	4.6	28	25	114



Shady Lane Farms

Nicole Jessen
17146 377th Ave
Redfield, SD 57469
Nljessen87@gmail.com

**Lot
33-37**

33 Shady Lane NJ 8044

NSIP ID # 620131-2018-008044

Born: 10/15/2018 **Polypay** Ram

Hidden Valley 3585

Knutson F619

Freking F258N
Henke HF 5062Y

[More Info](#)

U of WI 17-319

U of WI 15-334

EBVs					
WWT	MWWT	PWWT	NLB	NLW	US Mat
2.19	1.09	5.1	22.3	19.1	111.1

NJ 8044 is long, tall & structurally correct. His dam has lambed 3 times as a 2 year old. Twin, RR

34 Shady Lane NJ 9020

NSIP ID # 620131-2019-199020

Born: 1/18/2019 **Polypay** Ram

JCC 724

Grandview GVW 840

GVW 674
U of WI 10-190

[More Info](#)

U of WI 17-308

U of WI 15-406

EBVs					
WWT	MWWT	PWWT	NLB	NLW	US Mat
2.7	1.0	4.8	16	25	113.8

NJ 9020 is a long bodied correct ram. Twin, Codon 171 available sale day.

Polypay Division

35 Shady Lane NJ 9028

NSIP ID # 620131-2019-1990208

Born: 1/18/2019 **Polypay** Ewe

JCC 724

Grandview GVW 840

GVW 674
Knutson F619

[More Info](#)

Shady Lane NJ 8027

Knutson 1626

EBVs					
WWT	MWWT	PWWT	NLB	NLW	US Mat
2.8		6.2	15	20	110.9

NJ 8027 is a twin out of a 2018 ewe lamb. Codon 171 sale day.

36 Shady Lane NJ 9029

NSIP ID # 620131-2019-199029

Born: 2/11/2019 **Polypay** Ewe

JCC 724

Grandview GVW 840

GVW 674
BPP 260

[More Info](#)

Big Prairie 506

BPP 105

EBVs					
WWT	MWWT	PWWT	NLB	NLW	US Mat
2.5		5.3			109.1

NJ 9029 & NJ9030 are the first set of lambs for BP 506.

37 Shady Lane NJ 9030

NSIP ID # 620131-2019-199030

Born: 2/11/2019 **Polypay** Ewe

JCC 724

Grandview GVW 840

GVW 674
BPP 260

[More Info](#)

Big Prairie 506

BPP 105

EBVs					
WWT	MWWT	PWWT	NLB	NLW	US Mat
2.3		4.8			109

Twin sister to NJ 9029



University of Wisconsin

Todd Taylor
W4857 Meek Road
Arlington, WI 53911
608-332-4914
toddtaylor@wisc.edu

**Lot
38-42D**

38 U of WI 18-362

NSIP ID # 620078-2018-018362

Born: 1/25/2018

Polypay

Ram

Notkwyta Ranch NR1246

U of WI 15-437

U of WI 14-307

Refshaw RP4141

[More Info](#)

U of WI 16-424

U of WI 13-315

EBVs						
WWT	MWWT	PWWT	NLB	NLW	PFEC	US Mat
3.28	2.26	6.07	11.2	18	2.46	114.79

This ram is a holdover from a grad student feed/genetic research project from last summer. We used him to breed last fall and resulted in 25+ lambs on the ground by him already. Three daughters are entered as one of our pens of ewe lambs! Twin, RR

Polypay Division



Lot 38

Polypay Division

39 U of WI 18-401

NSIP ID # 620078-2018-018401

Born: 2/13/2018

Polypay

Ram

Notkwyta Ranch NR1246

U of WI 15-437

U of WI 14-307

U of WI 14-450

[More Info](#)

U of WI 15-448

U of WI 14-321

EBVs						
WWT	MWWT	PWWT	NLB	NLW	PFEC	US Mat
2.52	2.39	4.69	6	26	-31.42	118.11

If you like them long and level, this guy has the look and still has above average numbers across the board! Very strong in MWWT, NLW and a good bit of parasite resistance! Twin, RR



Lot 39



Lot 40

40 U of WI 18-514

NSIP ID # 620078-2018-018514

Born: 10/1/2018

Polypay

Ram

Notkwyta Ranch NR1246

U of WI 15-437

U of WI 14-307

U of WI 09-925

[More Info](#)

U of WI 12-330

U of WI 10-351

EBVs						
WWT	MWWT	PWWT	NLB	NLW	PFEC	US Mat
2.38	2.12	5.34	12.4	25.8	-58.55	117.02

Natural Fall Born Ram out of 15437! Maternal ½ brother to the high selling ram sold to U of Kentucky in last year's sale! UW 12330 has been a very consistent fall lamber! Lambled Jan and Oct 2015 and every fall since then. She's confirmed bred to lamb in Sept again this year!

Polypay Division

41-A U of WI 19-544 - Pen of 3 Ewes

NSIP ID # 620078-2019-019544

Born: 2/25/19 Polypay Ewe

U of WI 15-437

U of WI 18-362

U of WI 16-424

[More Info](#)

U of WI 10-190

U of WI 17-374

U of WI 14-435

EBVs						
WWT	MWWT	PWWT	NLB	NLW	PFEC	US Mat
2.94	1.48	5.64	10.6	19.5	1.36	113.18

41-B U of WI 19-456 - Pen of 3 Ewes

NSIP ID # 620078-2019-019456

Born: 2/17/19 Polypay Ewe

U of WI 15-437

U of WI 18-362

U of WI 16-424

[More Info](#)

U of WI 10-190

U of WI 15-343

U of WI 12-334

EBVs						
WWT	MWWT	PWWT	NLB	NLW	PFEC	US Mat
2.46	1.76	4.8	17.7	16.8	-7.18	112.27

41-C U of WI 19-376 - Pen of 3 Ewes

NSIP ID # 620078-2019-01976

Born: 2/10/19 Polypay Ewe

U of WI 15-437

U of WI 18-362

U of WI 16-424

[More Info](#)

U of WI 14-450

U of WI 16-308

U of WI 13-407

EBVs						
WWT	MWWT	PWWT	NLB	NLW	PFEC	US Mat
2.18	1.19	4.07	12.5	19.2		111.77

We have close to 125 ewe lambs to go through this year! Probably as good and consistent set as we have ever had. These three are out of 18362, one of our yearling ram entries. If you like these, we will have more in our Production Sale here in Arlington, Saturday September 21st, 2019!! Ask me for a catalog, I should have some available sale day!!

Polypay Division

42-A U of WI 19-520 - Pen of 4 Ewes

NSIP ID # 620078-2019-019520

Born: 2/23/19 Polypay Ewe

Hidden Valley H37022

U of WI 18-328

U of WI 16-492

U of WI 16-485

[More Info](#)

U of WI 17-424

U of WI 16-308

EBVs						
WWT	MWWT	PWWT	NLB	NLW	PFEC	US Mat
2.46	1.76	4.8	17.7	16.8	-7.18	112.27

42-B U of WI 19-437 - Pen of 4 Ewes

NSIP ID # 620078-2019-019437

Born: 2/15/19 Polypay Ewe

Hidden Valley H37022

U of WI 18-328

U of WI 16-492

U of WI 15-437

[More Info](#)

U of WI 17-401

U of WI 15-434

EBVs						
WWT	MWWT	PWWT	NLB	NLW	PFEC	US Mat
2.92	2.11	5.88	3.9	21.3	-36.68	115.78

42-C U of WI 19-515 - Pen of 4 Ewes

NSIP ID # 620078-2019-019515

Born: 2/23/19 Polypay Ewe

Hidden Valley H37022

U of WI 18-327

U of WI 16-492

Henke H5062Y

[More Info](#)

U of WI 17-335

U of WI 15-383

EBVs						
WWT	MWWT	PWWT	NLB	NLW	PFEC	US Mat
2.63	2.53	5.34	22	20.2	2.62	115.64

42-D U of WI 19-443 - Pen of 4 Ewes

NSIP ID # 620078-2019-019443

Born: 2/15/19 Polypay Ewe

Hidden Valley H37022

U of WI 18-327

U of WI 16-492

Grandview GV 9037

[More Info](#)

U of WI 16-376

U of WI 14-396

EBVs						
WWT	MWWT	PWWT	NLB	NLW	PFEC	US Mat
2.63	2.11	5.22	3.3	19.2	-36.58	114.8

Great pen of 4 here out of twin brothers! We have a deep set of February ewe lambs. Will be many more like these girls in our September Sale!! Come see us!! Should have 70+ ewe lambs to sell again this year.

Polypay Division



Hausser Polypays

Don & Mary Hausser
S67 W38381 Cty Rd ZZ
Eagle, WI 53119
262-495-2692

D.mhausser@gmail.com

**Lot
43-46**

43

Hausser 19014

NSIP ID # 620096-2019-H19014

Born: 2/9/19

Polypay

Ram

Hausser 16045

Hausser 18035

Hausser 13031

Hausser 16049

[More Info](#)

Hausser 17027

Hausser 12034

EBVs

WWT	MWWT	PWWT	NLB	NLW	Mat \$	US Mat
2.6	1.03	6.4	26	27	147.1	114.5

This ram is from very production-based lines. His sire, H18035, supplied us with about 1/3 of this year's lambs in the 1st cycle, then went on to work in a flock in Nebraska. His grand dams have produced 31 lambs in 7 years. Hausser 16045 is still one of the top NSIP sires in the nation, now at the Knutson's.

44

Hausser 19021

NSIP ID # 620096-2019-H19021

Born: 2/10/19

Polypay

Ram

Uncompa6193hg

Patriot P8063C

Patriot P7042S

Hausser 15028

[More Info](#)

Hausser 16035

Hausser 13031

EBVs

WWT	MWWT	PWWT	NLB	NLW	Mat \$	US Mat
3.1	1.5	7.3	25	22	147.1	113.9

More production in this ram sired by a Patriot ram with Sorenson (West Cyclone) & Uncompahgre genetics. Hausser breeding on dam's side includes full sister of H16034 ram that was one of the high selling elite rams at Wooster last year. This ram should grow out to be a larger than average ram with his Maternal\$ index of 147

Polypay Division

45

Hausser 19001

NSIP ID # 620096-2019-H19001

Born: 1/22/19

Polypay

Ewe

Hausser 16045

Hausser 18035

Hausser 13031

CAK 3047A

[More Info](#)

Hausser 15029

Hausser 12034

EBVs						
WWT	MWWT	PWWT	NLB	NLW	Mat \$	US Mat
2.1	1.4	4.6	24	27	144.2	114.8

These twin sisters represent some of our best in future production ewes.

46

Hausser 19002

NSIP ID # 620096-2019-H19002

Born: 1/22/19

Polypay

Ewe

Hausser 16045

Hausser 18035

Hausser 13031

CAK 3047A

[More Info](#)

Hausser 15029

Hausser 12034

EBVs						
WWT	MWWT	PWWT	NLB	NLW	Mat \$	US Mat
2.4	1.4	5.4	24	27	143.6	114.9

Twin to H19001.



Patriot Polypays

Chris & Mary Fagerness

428 100th Ave

Steen, MN 56173

507-855-2112

cfagerness@hotmail.com

**Lot
47-48**

47

Patriot P9051

NSIP ID # 620125-2019-P9051G

Born: 2/7/2019

Polypay

Ram

West Cyclone 5023G

Henke 6020G

HF 1215

JCC 508

[More Info](#)

Patriot 1665

West Cyclone 036U

EBVs					
WWT	MWWT	PWWT	NLB	NLW	US Mat
3.28	2.09	7.48	30.6	21.4	114.8

48

Patriot P8072

NSIP ID # 620125-2018-P8072C

Born: 3/6/2018

Polypay

Ram

Henke 14009

Uncompahgre 5199

Uncompahgre 385

Henke 6020G

[More Info](#)

Patriot 7022G

West Cyclone 5036U

EBVs					
WWT	MWWT	PWWT	NLB	NLW	US Mat
3.2	1.88	6.23	25	24	115.7



Big Prairie Polypays

Mark Meurer

1869 Midway Road

Ashton, IL 61006

815-973-5576

meurer66@gmail.com

**Lot
49-55**

Polypay Division

49

Big Prairie 683

NSIP ID # 620112-2018-00C683

Born:10/20/18

Polypay

Ram

Big Prairie 235

U of WI 14-450

U of WI 10-192

Pharo 14426K

[More Info](#)

Lambshire 6188K

Lambshire 3098X

EBVs

WWT	MWWT	PWWT	NLB	NLW	Mat \$	US Mat
1.5	1.5	3.3	6	6	122.3	107

Naturally-conceived, fall ram lamb that is stout, phenotypically correct and productive. Adj 90 day weaning weight of 107 lbs. Growth plus maternal. Sired by U of WI 14-450 and Lambshire brood ewe. Facebook Big Prairie Polypays for photos.

50

Big Prairie 701

NSIP ID # 620112-2018-00T701

Born:10/28/18

Polypay

Ram

U of WI 14-305

JCC 514

JCC 307

Big Prairie 735

[More Info](#)

Big Prairie 178

U of WI 9403

EBVs

WWT	MWWT	PWWT	NLB	NLW	Mat \$	US Mat
0.7	1.3	2.1	4	13	121.7	108.9

Naturally-conceived, fall ram lamb that is rugged, thick and productive. Adj 90 day weaning weight of 118.8. Another ram lamb that is phenotypically correct and full of production. Sired by Carlson 15-514 on a super Big Prairie brood ewe.

Polypay Division

51

Big Prairie 710

NSIP ID # 620112-2018-00T710

Born:11/2/18

Polypay

Ram

U of WI 14-305

JCC 514

JCC 307

[More Info](#)

U of WI 15-311

EBVs						
WWT	MWWT	PWWT	NLB	NLW	Mat \$	US Mat
1.5		3.2		10	122	109

Naturally-conceived, fall ram lamb that is full of volume, dimension and phenotypically correct. Adj 90 day weight of 128. He's a monster! Excellent growth with maternal production on both sides of pedigree. Carlson and U of WI breeding.



Big Prairie 710
Lot 51

Polypay Division

52

Big Prairie 684

NSIP ID # 620112-2018-00C684

Born:10/20/18

Polypay

Ewe

Big Prairie 235

U of WI 14-450

U of WI 10-192

Pharo 14426K

[More Info](#)

Lambshire 6188K

Lambshire 3098X

EBVs						
WWT	MWWT	PWWT	NLB	NLW	Mat \$	US Mat
1.6	1.5	3.6	6	6	123.1	107.1

Naturally-conceived, fall ewe lamb that is big volumed, structurally correct and moderately framed. Adj 90 day weight of 97 lbs. Sired by U of WI 14-450 and a Lambshire brood ewe. Facebook Big Prairie Polypays for photos.

53

Big Prairie 697

NSIP ID # 620112-2018-00T697

Born:10/26/18

Polypay

Ewe

U of WI 14-305

JCC 514

JCC 307

Big Prairie 208

[More Info](#)

Big Prairie 470

U of WI 12-357

EBVs						
WWT	MWWT	PWWT	NLB	NLW	Mat \$	US Mat
0.5		0.4	7	17	117.9	108.5

Naturally-conceived, fall ewe lamb that is phenotypically correct and productive. Sired by Carlson 15-514 on a productive Big Prairie brood ewe.

54

Big Prairie 708

NSIP ID # 620112-2018-00T708

Born:11/1/18

Polypay

Ewe

U of WI 14-305

JCC 514

JCC 307

[More Info](#)

Big Prairie 300

EBVs						
WWT	MWWT	PWWT	NLB	NLW	Mat \$	US Mat
0.4	1.3	1.2	3	12	118.2	108.4

Naturally-conceived, fall ewe lamb with volume, thickness and structural correctness. Sired by Carlson 15-514 on a productive Big Prairie brood ewe.

55

Big Prairie 711

NSIP ID # 620112-2018-00T711

Born:11/2/18

Polypay

Ewe

U of WI 14-305

JCC 514

JCC 307

[More Info](#)

U of WI 15-311

EBVs						
WWT	MWWT	PWWT	NLB	NLW	Mat \$	US Mat
1.0		2.1		10	119	108.7

Naturally-conceived, fall ewe lamb that is phenotypically correct and productive. Adj 90 day weight of 101 lbs. Sired by Carlson 15-514 on a super U of WI brood ewe.

Polypay Division



Neaton Polypays

Holly Neaton, DVM
11549 Hwy 25 SW
Watertown, MN 55388
952-240-2197
hjneaton@gmail.com

**Lot
56-57**

56

Neaton 19049

NSIP ID # 620020-2019-019049

Born:2/22/2019 **Polypay** Ram

U of WI 10-190

Grandview GVW 509

Grandview GV 1274
Elm Creek E0038X

[More Info](#)

Neaton 5508

Neaton 3022

EBVs

WWT	MWWT	PWWT	NLB	NLW	Mat \$	US Mat
2.4	6.2	-1.9	11.5	19.7	139.3	111.0

Twin born, RR, full brother to 18126. Dam raised 9 lambs from 5 lambings by age 4. Weaned 127 pounds at age 14 months, 140 pounds and 138 pounds before 60 d weaning at ages 3 and 4. Lambed fall of 2017. Lamb comes from a high health flock-testing negative for OPP and monitored negative for Johnes and CL.

57

Neaton 18126

NSIP ID # 620020-2018-018126

Born:5/17/2018 **Polypay** Ram

U of WI 10-190

Grandview GVW 509

Grandview GV 1274
Elm Creek E0038X

[More Info](#)

Neaton 5508

Neaton 3022

EBVs

WWT	MWWT	PWWT	NLB	NLW	Mat \$	US Mat
2.3	0.74	5.8	11.5	19.7	138.1	110.9

Twin born, RR, full brother to 19049. Dam raised 9 lambs from 5 lambings by age 4, 140 pounds and 138 pounds before 60 d weaning at ages 3 and 4. Lambed fall of 2017. Lamb comes from a high health flock-testing negative for OPP and monitored negative for Johnes and CL.

Polypay Division



**Lot
58-59**

JCC Polypays

John & Colleen Carlson
13525 N 1050th Road
Macomb, IL 61455
309-333-9798
jccarlson@logonix.net

58

JCC 909

NSIP ID # 620007-2019-190909

Born: 1/10/2019

Polypay

Ram

Henke H5062Y

U of WI 17-369

U of WI P13-455

Elm Creek 2041B

[More Info](#)

JCC 318

JCC 115

EBVs						
WWT	MWWT	PWWT	NLB	NLW	Mat \$	US Mat
2.11	2.61	4.17	29	32	146.9	120.1

This ram's mother is the top indexing ewe in the breed and always produces top caliber animals—very consistent and excellent quality. We are using one of her sons as a stud. By breeding her to our new Wisconsin stud ram, she produced this ram with a high milk value and strong NLB and NLW. This ram can take your flock to the top!

59

JCC 920

NSIP ID # 620007-2019-190920

Born: 1/17/2019

Polypay

Ram

Henke H6020G

Patriot P8092G

Patriot 1665

U of WI P14305

[More Info](#)

JCC 602

JCC 318

EBVs						
WWT	MWWT	PWWT	NLB	NLW	Mat \$	US Mat
2.81	2.42	5.91	22	26	148.3	117.9

This ram's mother consistently weans heavy, uniform lambs. Born and raised a twin. Last year his mother weaned triplets. Her daughters are making great brood ewes. His sire is the Patriot Polypays ram that sold so well at last year's CNS. This ram will sire top replacement ewes for you.

Polypay Division



Diamond K Sheep Co.

Brandon & Michelle Knutson
8605 Kemmerer Rd.
Clinton, WI 53525
608-732-4955

dksheepco@yahoo.com

Lot
60-66B

60

DK 9107

NSIP ID # 620128-2019-009107

Born: 1/1/2019

Polypay

Ram

JCC 1438

Hausser H16045

Hausser 12034

Henke 5062Y

[More Info](#)

U of WI 17-337

U of WI 15-320

EBVs						
WWT	MWWT	PWWT	NLB	NLW	Mat \$	US Mat
3.46	2.06	8.93	37	38	138.44	121.5

Quad raised Quad, R+ at codon 171, Stout, thick made ram. NLB – top 1%, NLW – top ram in NSIP, PWWT- top 1%, WWT- top 4%, MWWT- top 5%.

61

DK 9134

NSIP ID # 620128-2019-009134

Born: 1/1/2019

Polypay

Ram

JCC 1438

Hausser H16045

Hausser 12034

Grandview 9037K

[More Info](#)

U of WI 16-414

U of WI 14-371

EBVs						
WWT	MWWT	PWWT	NLB	NLW	Mat \$	US Mat
2.7	1.89	6.7	12	23	143.28	113.6

Well rounded ram that will add value to any lamb crop. Twin raised Twin, R+ at 171

Polypay Division

62

DK 9110

NSIP ID # 620128-2019-009110

Born: 1/3/2019

Polypay

Ram

JCC 1438

Hausser H16045

Hausser 12034

Henke 1136

[More Info](#)

Freking 201N

Elm Creek 2072B

EBVs

WWT	MWWT	PWWT	NLB	NLW	Mat \$	US Mat
2.43	0.68	6.79	19	22	138.44	111.26

Twin Raised Twin. R+ at 171, 9110 and 9114 are full brothers. They are out of Freking 201N, our biggest framed, heaviest milking ewe in the flock. Both of these rams are big, stout and fast growing. 9110 and 9114 will add a lot of value to lambs for anybody that sells lamb by the pound.

63

DK 9114

NSIP ID # 620128-2019-009114

Born: 1/3/2019

Polypay

Ram

JCC 1438

Hausser H16045

Hausser 12034

Henke 1136

[More Info](#)

Frekin 201N

Elm Creek 2072B

EBVs

WWT	MWWT	PWWT	NLB	NLW	Mat \$	US Mat
2.43	0.68	6.79	19	22	142.54	111.5

Quad raised Quad, R+ at codon 171, Stout, thick made ram. NLB – top 1%, NLW – top ram in NSIP, PWWT- top 1%, WWT- top 4%, MWWT- top 5%.

64-A

DK 9100 --Pen of 2 Ewes

NSIP ID # 620128-2019-009100

Born: 1/1/2019

Polypay

Ewe

JCC 1438

Hausser H16045

Hausser 12034

Henke 5062Y

[More Info](#)

U of WI 16-551

U of WI 13-401

EBVs

WWT	MWWT	PWWT	NLB	NLW	Mat \$	US Mat
2.67	1.46	6.59	25	27	147.86	115.67

A nice set of Twin born and raised full sisters out of U of WI 16551. 16551 raised triplets as a ewe lamb. 9100 and 9101 have the most bone and body capacity in our ewe lamb pen this year.

64-B

DK 9101 --Pen of 2 Ewes

NSIP ID # 620128-2019-009101

Born: 1/1/2019

Polypay

Ewe

JCC 1438

Hausser H16045

Hausser 12034

Henke 5062Y

[More Info](#)

U of WI 16-551

U of WI 13-401

EBVs

WWT	MWWT	PWWT	NLB	NLW	Mat \$	US Mat
2.62	1.46	6.33	25	27	147.11	115.63

Polypay Division

65-A

DK 9111 --Pen of 2 Ewes

NSIP ID # 620128-2019-009111

Born: 1/2/2019

Polypay

Ewe

JCC 1438

Hausser H16045

Hausser 12034

Plucinski 14002

[More Info](#)

Diamond K 169

Freking 258N

EBVs						
WWT	MWWT	PWWT	NLB	NLW	Mat \$	US Mat
1.52	0.88	4.2	22	25	138.21	112.68

Full sisters out of a set of triplets. Well rounded EBVs and genetic package with a lot of potential.

65-B

DK 9112 --Pen of 2 Ewes

NSIP ID # 620128-2019-009112

Born: 1/2/2019

Polypay

Ewe

JCC 1438

Hausser H16045

Hausser 12034

Plucinski 14002

[More Info](#)

Diamond K 169

Freking 258N

EBVs						
WWT	MWWT	PWWT	NLB	NLW	Mat \$	US Mat
1.61	0.88	4.29	22	25	138.56	112.73

66-A

DK 9121 --Pen of 2 Ewes

NSIP ID # 620128-2019-009121

Born: 1/8/2019

Polypay

Ewe

JCC 1438

Hausser H16045

Hausser 12034

Hidden Valley 3585

[More Info](#)

Diamond K 4620

Freking 238N

EBVs						
WWT	MWWT	PWWT	NLB	NLW	Mat \$	US Mat
2.45	0.59	6.6	16	21	140.85	111.12

Full sisters out of our 4620 ewe. 4620 is phenotypically one of the best ewes we have in our flock and these are right there with her. She is out of our Hidden Valley ram 3585 that added a lot of size and capacity to our ewe flock. Freking 238N is one of our best milking ewes that consistently raises triplets. This genetic package ties a lot of things together and has a very bright future.

66-B

DK 9122 --Pen of 2 Ewes

NSIP ID # 620128-2019-009122

Born: 1/8/2019

Polypay

Ewe

JCC 1438

Hausser H16045

Hausser 12034

Hidden Valley 3585

[More Info](#)

Diamond K 4620

Freking 238N

EBVs						
WWT	MWWT	PWWT	NLB	NLW	Mat \$	US Mat
2.59	0.59	7.17	16	21	142.52	111.2

Polypay Division



Refshaw Ranch

Jeremy & Renita Refshaw
1339 290th Street
Waubun, MN 56589
218-230-5383
refshawranch@yahoo.com

**Lot
67-73**

67

RP 8045

NSIP ID # 620090-2018-RP8045

Born: 2/11/18

Polypay

Ram

U of WI 15-398 Tr

RP 17031 QD

RPB130 TW

ECP 10006 senordos TW

RP 4124 TW

RPZ025 TR

[More Info](#)

EBVs						
WWT	MWWT	PWWT	NLB	NLW	PFEC	US Mat
1.9	1.2	3.5	15.9	31.9	-28.7	116.8

RR Triplet born, triplet raised. NLW is in the top 2% and Fecal Egg Counts in top 15% of the breed.



**RP 8045
Lot 67**

Polypay Division

68

RP 9027

NSIP ID # 620090-2019-RP9027

Born: 2/8/2019

Polypay

Ram

RP 6042 TR

RP 8017 TW

RPB125 TW

JCC 1543 TR

[More Info](#)

RP 7166 TW

RP 6028 TR

EBVs						
WWT	MWWT	PWWT	NLB	NLW	PFEC	US Mat
3.2	1.6	8.1	5.6	27.8	5.3	117.47

RR Twin born and twin raised. Milk in the top 25%, NLW in top 10%, WWT in top 10%, PWWT in top 3% and top 5% for index.



RP 9027
Lot 68



RP 9087
Lot 69

69

RP 9087

NSIP ID # 620090-2019-RP9087

Born: 2/13/2019

Polypay

Ram

U of WI 15-398 TR

RP 7031 QD

RPB130 TW

RP 5050 TW

[More Info](#)

RP 6018 TR

RPZ 015 TW

EBVs						
WWT	MWWT	PWWT	NLB	NLW	PFEC	US Mat
2.5	1.3	5.7	5.3	25.8	-29.5	115.43

RR, Twin born twin raised. Index in the top 15%, Fecal egg count in the top 15% and NLW in the top 15% of the breed.



RP 9017
Lot 70

RP 9016
Lot 71

RP 9026
Lot 72

RP 9134
Lot 73

Polypay Division

70

RP 9017

NSIP ID # 620090-2019-RP9017

Born: 2/6/2019

Polypay

Ewe

JCC 1543 TR

RP 7008 QD

RPZ 048 TR

[More Info](#)

U of WI 15-398 TR

RP 7040 TW

RP 514 TR

EBVs

WWT	MWWT	PWWT	NLB	NLW	PFEC	US Mat
2.5	1.7	6.5	21.5	30.0	7.8	117.44

RR Twin born Twin Raised. MWWT is in the top 20%, Index is in the top 5% and NLW is in the top 3% of the breed! Taken right out of the keep pen!

71

RP 9016

NSIP ID # 620090-2019-RP9016

Born: 2/6/2019

Polypay

Ewe

JCC 1543 TR

RP 7008 QD

RPZ 048 TR

[More Info](#)

U of WI 15-398 TR

RP 7040 TW

RP 514 TR

EBVs

WWT	MWWT	PWWT	NLB	NLW	PFEC	US Mat
2.4	1.7	6.5	21.5	30.0	7.8	117.37

RR Twin born Twin Raised. MWWT is in the top 20%, Index is in the top 5% and NLW is in the top 3% of the breed! Taken right out of the keep pen!

72

RP 9026

NSIP ID # 620090-2019-RP9026

Born: 2/8/2019

Polypay

Ewe

RP 6042 TR

RP 8017 TW

RPB 125 TW

[More Info](#)

JCC 1543 TR

RP 7166 TW

RP 6028 TR

EBVs

WWT	MWWT	PWWT	NLB	NLW	PFEC	US Mat
2.8	1.6	7.2	5.6	27.8	5.3	117.24

RR Twin born Twin Raised. WWT is in the top 20%, NLW top 10%, PWWT top 10% and Index is top 5% of the breed! Taken out of the keep pen!

73

RP 9134

NSIP ID # 620090-2019-RP9134

Born: 2/18/2019

Polypay

Ewe

JCC 1543 TR

RP 7008 QD

RPZ 048 TR

[More Info](#)

U of WI 15-398 TR

RP 6073 TW

RPA 115 TW

EBVs

WWT	MWWT	PWWT	NLB	NLW	PFEC	US Mat
2.7	1.3	7.0	24.1	32.0	-20.6	117.32

RR Triplet born, Twin Raised. Index I in the top 5% of the breed and Fecal egg counts are in the top 15%. Taken out of the keep pen!

Polypay Division



Hoiten Polypays

Doug Hoiten
44674 256th Street
Montrose, SD 57048
605-769-0808
hoitens@goldenwest.net

**Lot
74-78**

74 Hoiten 1909

NSIP ID # 620132-2019-191909

Born: 1/13/2019 **Polypay** Ram
JCC 508

Patriot 1643

West Cyclone W4015B
CAK K3047A

[More Info](#)

Hausser 14052

Hausser 12085

EBVs					
WWT	MWWT	PWWT	NLB	NLW	US Mat
1.9	1.1	4.7	14	16	110.2

RR at Scrapie Codon 171. A stout ram who will add bone & muscle. Structurally correct and ready to go to work. Triplet born and raised.

75 Hoiten 1919

NSIP ID # 620132-2019-191919

Born: 1/16/2019 **Polypay** Ram
U of WI 14-450

Big Prairie 557

Grandview GV 351
Patriot 1643

[More Info](#)

Hoiten 1726

Hausser 16044

EBVs					
WWT	MWWT	PWWT	NLB	NLW	US Mat
1.6	0.9	3.6	9	11	107.4

RR at Scrapie Codon 171. Twin born and raised. Long bodied ram that will add bone and make great replacement ewe lambs. As more data is collected, numbers will only get more accurate.

Polypay Division

76 Hoiten 1902

NSIP ID # 620132-2019-191902

Born: 1/13/2019 **Polypay** Ewe

JCC 508

Patriot 1643

West Cyclone W4015B

CAK K3047A

[More Info](#)

Hausser 15023

Hausser 12053

EBVs					
WWT	MWWT	PWWT	NLB	NLW	US Mat
2.1	0.9	5.7	20	18	110.1

-R at codon 171, A ewe lamb who adds pounds to your next lamb crop. Triplet born and raised.

77 Hoiten 1930

NSIP ID # 620132-2019-191930

Born: 1/17/2019 **Polypay** Ewe

JCC 508

Patriot 1643

West Cyclone W4015B

Hausser 14017

[More Info](#)

Hausser 6003

U of WI 9453

EBVs					
WWT	MWWT	PWWT	NLB	NLW	US Mat
1.2	1.3	3.8	8	9	107.6

-R at codon 171, Twin born and raised.

78 Hoiten 1918

NSIP ID # 620132-2019-191918

Born: 1/16/2019 **Polypay** Ewe

U of WI 14-450

Big Prairie 557

Grandview GV 351

Patriot 1643

[More Info](#)

Hoiten 1726

Hausser 16044

EBVs					
WWT	MWWT	PWWT	NLB	NLW	US Mat
1.4	0.9	3.2	9	11	107.3

-R at codon 171. Twin born and raised. Ewe lamb out of our Big Prairie ram who adds growth to lambs.

Polypay Division



CAK Polypays

Chris Kaeb
639 N 1000 East Road
Buckley, IL 60918
815-482-0381
cakfarm@gmail.com

**Lot
79-82**

79 CAK K9031Z

NSIP ID # 620095-2019-K9031Z

Born: 1/30/2019 **Polypay** Ram

U of WI 15-437

U of WI 17-414

U of WI 10-192

DB Farms D5021R

[More Info](#)

CAK K6007R

CAK K3009A

EBVs					
WWT	MWWT	PWWT	NLB	NLW	US Mat
2.4	2.44	5.6	13	23.6	117.0

RR, The numbers speak for themselves on this ram lamb and he has the build to go along with them. He gained .96 lbs/day from weaning to 120 days. Twin raised as a twin.

80

CAK K9024Z

NSIP ID # 620095-2019-K9024Z

Born: 1/27/2019 **Polypay** Ram

U of WI 15-437

U of WI 17-414

U of WI 10-192

Lambshire L4088F

[More Info](#)

CAK K6027F

CAK K3054A

EBVs					
WWT	MWWT	PWWT	NLB	NLW	US Mat
2.9	2.12	6.1	13.1	24.2	116.6

RR, Another nice ram out of the University of Wisconsin ram I bought 2 years ago. Solid numbers with a great NLB to NLW ratio. Twin raised as a twin.

Polypay Division

81 **CAK K9029Y**

NSIP ID # 620095-2019-K9029Y

Born: 1/28/2019 **Polypay** Ewe

Henke H14074

Elm Creek E7005Y

Elm Creek E4025G

Lambshire L5084X

[More Info](#)

CAK K7020X

CAK K5036W

EBVs					
WWT	MWWT	PWWT	NLB	NLW	US Mat
2.5	1.26	5.8	17.2	20.1	112.4

RR, Nice looking late January ewe lamb. Balanced EBVs. Twin
Raised as a twin.

82 **CAK K9030Z**

NSIP ID # 620095-2019-K9030Z

Born: 1/30/2019 **Polypay** Ewe

U of WI 15-437

U of WI 17-414

U of WI 10-192

DB Farms D5021R

[More Info](#)

CAK K6007R

CAK K3009A

EBVs					
WWT	MWWT	PWWT	NLB	NLW	US Mat
2.4	2.44	5.5	13	23.6	117.0

QR, Nice ewe lamb out of one of my heaviest milking ewes. Strong
numbers across the board. Twin raised as a twin.



PR Performance Dorsets

Curt Stanley
7050 156th Ave NW
Bismarck, ND 58503
701-333-8009
curtsheep@gmail.com

Lot
83-86

83

PRPD 1814

NSIP ID # 696021-2018-001814

Born: 4/8/2018 **Dorset** Ram

PRFD 250

PRPD 1636

MSU 207

MSU 135

[More Info](#)

PRPD 567

PRFD 306

EBVs

WWT	PWWT	PEMD	PFAT	Carcass Plus	SRC\$
1.6	3.4	0.5	-1.45	127.3	106.1

This ram has been a standout since birth visually and genetically. On the ND Ram test he gained just over 1 lb per day for the 140 day test. Pictures on our FB page.

84

PRPD 1850

NSIP ID # 696021-2018-001850

Born: 4/23/2018 **Dorset** Ram

Huntrod 5887

VA Tech W068

VA Tech M009

RSO 2029

[More Info](#)

PRPD 576

UWRF 259

EBVs

WWT	PWWT	PEMD	PFAT	Carcass Plus	SRC\$
2.1	4.9		-1.5	117.5	107

The first ram sold from our VA Tech ram. We lambed a few half sisters that were just outstanding lambing at a year old. Pictures on our FB Page.

Dorset Division

85

PRPD 1903

NSIP ID # 696021-2019-001903

Born: 1/2/19 **Dorset** Ram

Ankeny Acres 0-192

Deckert J681

Deckert 426

RSO 2029

[More Info](#)

PRPD 1613

Deckert 332

EBVs

WWT	PWWT	PEMD	PFAT	Carcass Plus	SRC\$
2.3	1.3	.24	-1	114.36	103.6

An outcross ram with Ankeny (AUS), K Bar K (UK) in his pedigree. Pictures on our FB page.

86

PRPD 1926

NSIP ID # 696021-2019-001926

Born: 1/9/2019 **Dorset** Ram

PRFD 250

PRPD 1636

MSU 207

RSO 2029

[More Info](#)

PRPD 542

PRFD 211

EBVs

WWT	PWWT	PEMD	PFAT	Carcass Plus	SRC\$
2.1	4.1	.16	-1.4	126.9	108.5

The buck lamb that you would pick out of the pen on visual that also is our highest index lamb for Carc+, SRC\$ and Maternal.



Twin Maple Farm LLC

Pete, Ryan, Elliot and Jason Alberda

542 84th Ave

Zeeland, MI 49464

616-990-2893

susanalberda1@gmail.com

**Lot
87**

Dorset Division

87

821

NSIP ID # 696016-2018-180821

Born: 2/22/2018

Dorset

Ram

Blackdown Luther N84

K Bar K 111051 AI TW

K Bar K 088031

[More Info](#)

Meeuwse 0914 TW

Red Fern Farm 150503TW

Alberda 130323 S

EBVs					
WWT	PWWT	NLB	NLW	Carcass Plus	SRC\$
1.2	3.4	-2	2	114.6	108.6

A February twin born and raised RR yearling ram. He is a proven ram who sired lambs for both our February and May 2019 lambings. His sire, K Bar K 11051 passes on tremendous Dorset breed character as well as exceptional milking capability as shown by his trait leading MWWT EBV of 2.42. 821's dam, 503, has weaned nine lambs in four lambings as a four year old ewe. You can find more information on our Facebook page at Twin Maple Farm LLC and on our website at www.twinmaplefarms.net



Dorset Division



Meeuwse Farms

Dave and Nathan Meeuwse
3021 16th Street
Hopkins, MI 49328
269-760-1268
dmmeeuwse@gmail.com

**Lot
88-92**

88

8085

NSIP ID # 696030-2018-188085

Born: 2/27/2018 **Dorset** Ram
Huntrods 5887

VA Tech V041

VA Tech M009
K Bar K 111051

[More Info](#)

Meeuwse 1353

Meeuwse 1083

EBVs					
WWT	PWWT	NLB	NLW	Carcass Plus	SRC\$
3.4	6.6	-1	2	142.8	110.5

This February yearling was exposed to 8 ewe lambs in Dec 2018 and sired 15 lambs from them. Updated information on his progeny will be available sale day. He was in the top 10% for WWT and top 4% for Carcass+ in the Dorset breed.

89

8129

NSIP ID # 696030-2018-188129

Born: 3/7/2018 **Dorset** Ram
K Bar K 111159

Meeuwse 16122

Meeuwse 1242
Meeuwse 1281

[More Info](#)

Meeuwse 15020

Meeuwse 1362

EBVs					
WWT	PWWT	NLB	NLW	Carcass Plus	SRC\$
4.2	9.0	0	2	141.7	113.8

This March yearling was exposed to 9 ewe lambs and sired 8 lambs out of those ewes. Updated progeny data will be available sale day. He was in the top 1% for PWWT, top 2% for WWT and top 10% for Carcass+ in the Dorset breed. His sire, Meeuwse 16122, was 2nd on the Dorset Proven Sire list for WWT and PWWT.

Dorset Division

90

8100

NSIP ID # 696030-2018-188100

Born: 3/2/2018

Dorset

Ram

Huntrods 5887

VA Tech V041

VA Tech M009

Meeuwse 1278

[More Info](#)

Meeuwse 14031

Meeuwse 1071

EBVs

WWT	PWWT	NLB	NLW	Carcass Plus	SRC\$
2.5	5.6	2	5	141	112.9

This March yearling is from a very productive ewe line. His dam has produced 12 lambs in 5 years. He was in the top 25% for MWWT and NLB, Top 15% for NLW and top 10% for Carcass+. We are keeping his twin brother as a flock sire.

91

8005

NSIP ID # 696030-2018-188005

Born: 2/21/2018

Dorset

Ewe

K Bar K 111159

Meeuwse 16122

Meeuwse 1242

K Bar K 111051

[More Info](#)

Meeuwse 1377

Meeuwse 1064

EBVs

WWT	PWWT	NLB	NLW	Carcass Plus	SRC\$
2.6	4.9	-5	-2	125	106.2

This February Yearling lambd 4/29/19. Weaning weight information will be available sale day. She was in the top 40% of Dorset breed for WWT and PWWT and top 15% for MWWT. Her dam has produced and raised 11 lambs in 6 years. Her sire was listed 2nd on the Dorset Proven sire list for WWT and PWWT.

92

8014

NSIP ID # 696030-2018-188014

Born: 2/25/2018

Dorset

Ewe

Huntrods 5887

VA Tech V041

VA Tech M009

Meeuwse 1281

[More Info](#)

Meeuwse 16045

Meeuwse 14024

EBVs

WWT	PWWT	NLB	NLW	Carcass Plus	SRC\$
2.6	5.8	4	6	139.7	110.9

This February yearling lambd 5/2/19. She is in the top 5% of the Dorset breed for NLB and NLW.

Dorset Division



Virginia Tech Copenhaver Sheep Center

Scott Greiner
366 Litton Reaves Hall
Blacksburg, VA 24061
540-231-9159
sgreiner@vt.edu

Lot
93-96

93 VA Tech Z002

NSIP ID # 696022-2018-00Z002

Born: 10/24/2018 **Dorset** Ram

Huntrods 5887

VA Tech P026

VA Tech J025
Huntrods 5887

[More Info](#)

VA Tech P034

VA Tech E059

EBVs

WWT	PWWT	PEMD	PFEC	NLB	NLW	Carcass Plus	SRC\$
2	4.7	0.4	-14	-3.1	1.3	139	111

Z002 has been a favorite to many who have seen our fall rams. He is a very powerfully built, big bodied ram that is true to lineage of the Huntrods 5887 sire whose progeny and grandprogeny have populated the trait leader list for several years. His EBV profile is solid across the board. Codon 171 QR.

94 VA Tech Z009

NSIP ID # 696022-2018-00Z009

Born: 10/30/2018 **Dorset** Ram

Huntrods 5887

VA Tech P026

VA Tech J025
Huntrods 5887

[More Info](#)

VA Tech P040

VA Tech K080

EBVs

WWT	PWWT	PEMD	PFEC	NLB	NLW	Carcass Plus	SRC\$
1.6	4.2	0.1	-3	-7.3	-1.1	131	107

Z009 is the twin brother to the ram we are retaining to use at VT out of the fall group. He lines up the legendary Huntrods 5887 ram. His sire is "Pete", VA Tech P026 which was our first great son of 5887. Pete has more progeny on record than any other ram in the breed. This ram is very typical of the 5887 line- moderate framed, big ribbed, stout, and easy fleshing. Codon 171 RR

Dorset Division

95

VA Tech Z012

NSIP ID # 696022-2018-00Z012

Born: 11/1/2018

Dorset

Ram

Sidwell 4182

Maple Hollow 15125

Maple Hollow 1171

VA Tech P026

[More Info](#)

VA Tech W028

VA Tech N015

EBVs							
WWT	PWWT	PEMD	PFEC	NLB	NLW	Carcass Plus	SRC\$
3.4	6.3	0.2			-1.6	147	111

This ram offers some genetic reach, ranking in the top 15% of breed for growth and top 10% for Carcass Plus. His sire, Maple Hollow 15125, is an outcross to our Huntrods 5887 lines and is 25% Australian genetics. This ram is very typical of the 15125 sons- as they are also moderate framed, big bodied, stout made and correct. Codon 171 RR.

96

VA Tech Z019

NSIP ID # 696022-2018-00Z019

Born: 11/14/2018

Dorset

Ram

Huntrods 5887

VA Tech P026

VA Tech J025

Heisdorffer 1263

[More Info](#)

VA Tech S019

VA Tech P102

EBVs							
WWT	PWWT	PEMD	PFEC	NLB	NLW	Carcass Plus	SRC\$
3.9	8.9	-1	-20	-8.1	.5.0	139	110

Z019 is an outlier in the breed for growth, ranking at the top of the percentile chart for both WWT and PWWT. He is a very attractive, correct ram that has a little more extension. Codon 171 QR

Hampshire Division



Helming Hampshires

Marlin Helming
25044 Hwy 392
Greeley, CO 80631
970-336-1617
mdhelming@msn.com

Lot
97-98C

97

Helming 909

NSIP ID # 693007-2019-190909

Born: 1/29/2019

Hampshire

Ram

U of WI ML 0171

U of WI 17-112

U of WI 14-032

Roembke 1220I3

Helming H603

Helming H459

EBVs

WWT	PWWT	PEMD	PFAT	Carcass Plus
5.1	9.4	-1.3	-3	142.5

Twin RR, Certified Lamb Sire. Fast Growing lamb with a PWWT ADG of 1.38 lbs/day. Top 3% for Carcass plus and top individual for WWT and PWWT!



Hampshire Division

98A Helming 910

NSIP ID # 693007-2019-190910

Born: 1/29/2019

Hampshire

Ram

U of WI ML 0171

U of WI 17-112

U of WI 14-032

Roembke 1220I3

[More Info](#)

Helming H626

Helming H458

EBVs				
WWT	PWWT	PEMD	PFAT	Carcass Plus
4.8	9.0	-8	-3.1	145.5

Twin RR, Certified Lamb Sire. Another fast growing lamb with a PWWT ADG of 1.32 lbs/day. Top 3% for Carcass plus and top 1% for WWT & PWWT.



98B Helming 914

NSIP ID # 693007-2019-190914

Born: 1/31/2019

Hampshire

Ram

U of WI ML 0171

U of WI 17-112

U of WI 14-032

NDSU 15041

[More Info](#)

Helming 170806

Helming 150665

EBVs				
WWT	PWWT	PEMD	PFAT	Carcass Plus
4.3	7.9	-.4	-2.9	145

Twin RR Certified Lamb Sire. Top 1 % for PWWT, top 3% for WWT and Carcass Plus. PWWT ADG of 1.15 lbs/day. Picture perfect fancy looking lamb.

98C Helming 915

NSIP ID # 693007-2019-190915

Born: 1/31/2019

Hampshire

Ram

U of WI ML 0171

U of WI 17-112

U of WI 14-032

NDSU 15041

[More Info](#)

Helming 170806

Helming 150665

EBVs				
WWT	PWWT	PEMD	PFAT	Carcass Plus
4.1	7.4	-.3	-2.7	143

Twin to lot 98B, RR. Certified Lamb Sire. 97th percentile for carcass plus and 99th percentile for WWT and PWWT! PWWT ADG of 1.1 lbs/day.



Helming 915
Lot 98 C



Helming 914
Lot 98 B

Hampshire Division



University of Wisconsin

Todd Taylor
W4857 Meek Road
Arlington, WI 53911
608-332-4914
toddtaylor@wisc.edu

Lot
99-101

99

U of WI 19-062

NSIP ID # 693003-2019-019062

Born: 2/23/2019

Hampshire

Ram

U of WI 16-114

U of WI 18-074

U of WI 15-094

Beckmier 345

[More Info](#)

U of WI 16-071

U of WI 14-037

EBVs				
WWT	PWWT	PEMD	PFAT	Carcass Plus
3.3	6.25	-.06	-3.5	143.8

Young ram lamb that has been turning the crank!! Traces back to the Miller ram on the sire side and SDSU on the dam side.



U of WI 19-062
Lot 99

Hampshire Division

100

U of WI 19-009

NSIP ID # 693003-2019-019009

Born: 1/21/2019

Hampshire

Ram

Ott Club Lambs 3822

Rupnow 1079

Rupnow 989

Beckmier 345

[More Info](#)

U of WI 16-087

U of WI 14-013

EBVs				
WWT	PWWT	PEMD	PFAT	Carcass Plus
1.99	3.25	-.06	-1.2	120.23

Big growthy ram!! Very correct well -made ram.



U of WI 19-009
Lot 100



U of WI 19-026
Lot 101

101

U of WI 19-026

NSIP ID # 693003-2019-019026

Born: 1/31/2019

Hampshire

Ram

Rupnow 1079

U of WI 18-054

U of WI 15-026

Miller 071

[More Info](#)

U of WI 17-071

U of WI 07-046

EBVs				
WWT	PWWT	PEMD	PFAT	Carcass Plus
2.71	5.18	-.3	-1.4	126.7

Another well built, strong numbered ram lamb. I like the lambs we got out of 18054. Kind of regret selling him after breeding season last fall but do plan to keep a son.

Hampshire Division



Hayden's Hamps

Hayden Taylor
W4857 Meek Road
Arlington, WI 53911
608-332-4914
toddtaylor@wisc.edu

Lot
102-104

102

Taylor 19090 RR

NSIP ID # 693014-2019-019090

Born: 1/9/2019

Hampshire

Ram

Ott Club Lambs 3822

Rupnow/Metro 1079

Rupnow 0989

U of WI 10-075

U of WI 12-002

U of WI 06-219

[More Info](#)

EBVs				
WWT	PWWT	PEMD	PFAT	Carcass Plus
0.35	0.36	1.0	.36	112.05

I purchased 12002 from U of WI in 2015 and she just continues to produce quality lambs. She traces back to Double F clublambs. Take a look at the PEMD number on this ram!! He will add some loin depth!

Taylor 19090
Lot 102



Hampshire Division

103

Taylor 19109

NSIP ID # 693014-2019-019109

Born: 1/22/2019

Hampshire

Ewe

ISU 14-118

U of WI 15-103

U of WI 14-032

[More Info](#)

Hayden's Hamps 12-349

U of WI 14-044

U of WI 12-039

EBVs

WWT	PWWT	PEMD	PFAT	Carcass Plus
2.67	4.26	0.22	-2.87	135.45

Dad decided to put some bred ewes in his production sale last fall. Little did he know I'd find one that would spit out a great set of twin ewe lambs with exceptionally complete EBVs. I decided to keep one to show a little this summer and offer this one for sale to help pay some feed bills.

104

Taylor 19118

NSIP ID # 693014-2019-019118

Born: 1/26/2019

Hampshire

Ewe

Miller 0-171

U of WI 18-036

U of WI 15-081

[More Info](#)

Ott Club Lambs 3822

Rupnow 1084

Rupnow 978

EBVs

WWT	PWWT	PEMD	PFAT	Carcass Plus
1.41	2.3	.19	-1.5	119.77

A nice combination of growth and muscle in a ewe lamb that has a little different pedigree on the dam side.



Iowa State University

Sheep Teaching Farm

Trey Jackson

806 Stange Rd. 1221 Kildee Hall

Ames, IA 50011

515-897-9766

bdresche@iastate.edu

Lot

105-109

105

ISU G9000

NSIP ID # 693005-2019-9G9000

Born: 1/23/2019

Hampshire

Ram

U of WI 15-103

Roembke 1645U2

Roembke 1236S1

[More Info](#)

ISU A109

ISU 14-131

ISU A134

EBVs

WWT	PWWT	PEMD	PFAT	Carcass Plus
3.5	6.2	-2	-3.6	141.7

Top 3% for WWT and Carcass+ and top 4% for PWWT. RR at 171

Hampshire Division

106 ISU G9004

NSIP ID # 693005-2019-9G9004

Born: 1/25/2019

Hampshire

Ram

U of WI 15-103

Roembke 1645U2

Roembke 1236S1

ISU B133

[More Info](#)**ISU 15C014**

ISU 10-0015

EBVs				
WWT	PWWT	PEMD	PFAT	Carcass Plus
3.4	5.4	0.7	-3	146.8

Top 2% for Carcass+, top 3% for WWT, top 10% for PWWT and top 15% for PEMD. RR at Codon 171.

107 ISU G9014

NSIP ID # 693005-2019-9G9014

Born: 1/28/2019

Hampshire

Ram

U of WI 15-103

Roembke 1645U2

Roembke 1236S1

ISU IS 7104

[More Info](#)**ISU A120**

ISU 3116

EBVs				
WWT	PWWT	PEMD	PFAT	Carcass Plus
3.4	5.4	-0.8	-1.5	123.4

Top 3% for WWT, top 10% for PWWT and top 25% for Carcass +. RR at Codon 171.

108 ISU G9017

NSIP ID # 693005-2019-9G9017

Born: 1/28/2019

Hampshire

Ram

U of WI 15-103

Roembke 1645U2

Roembke 1236S1

ISU B133

[More Info](#)**ISU C010**

ISU A129

EBVs				
WWT	PWWT	PEMD	PFAT	Carcass Plus
2.5	4.3	0.4	-1.6	132

Top 15% for WWT and Carcass+, top 20% for PWWT and top 25% for PEMD. RR at Codon 171

109 ISU G9047

NSIP ID # 693005-2019-9G9047

Born: 1/30/2019

Hampshire

Ram

ISU 14-118

U of WI 15-103

U of WI 14-032

U of WI 13-148

[More Info](#)**U of WI 15-081**

U of WI 8058

EBVs				
WWT	PWWT	PEMD	PFAT	Carcass Plus
1.9	2.9	.9	-2.4	134.7

Top 10% for Carcass + and top 15% for PEMD. RR at codon 171.

Hampshire Division



Roembke Hampshires

Mark & Richard Roembke
3504 Country Aire Drive
Cedarburg, WI 53012
262-707-0032
mjrhamps@hotmail.com

**Lot
110-115**

110

Roembke M1840 TW RR

NSIP ID # 693004-2018-1840M2

Born: 3/10/2018

Hampshire

Ram

U of WI 15103

Roembke U1707

Roembke N1334

MacCarthy 227

[More Info](#)

Roembke N1462

Roembke S1104

EBVs

WWT	PWWT	PEMD	PFAT	Carcass Plus
3.2	6.4	-8	-3.1	133.4

Top 4% for WWT, top 3% for PWWT, top 10% for Carcass +. Used as cleanup ram last fall. Retaining 2 half brothers so I need to sell him. His pedigree contains all high volume (capacity) ewes & rams.



Roembke 1840
Lot 110

Hampshire Division

111

Roembke M1905 Sg RR

NSIP ID # 693004-2019-1905R1

Born: 2/4/19

Hampshire

Ram

Roselawn 561 "Chauncey"

Roselawn Legacy 1749

Pfliger 505

Roembke C1019

[More Info](#)

Roembke S1419

Roembke F1210

EBVs

WWT	PWWT	PEMD	PFAT	Carcass Plus
1.6	2.6	1.5	-1.9	137.7

Top 3% for PEMD, top 10% for Carcass +. This is one of those "lookers", the lamb that catches your eye when you walk into the barn. Balanced EBVs for WWT, PWWT and PEMD!



Roembke 1905
Lot 111

Roembke 1933
Lot 112



112

Roembke M1933 TW RR

NSIP ID # 693004-2019-1933E1

Born: 2/21/19

Hampshire

Ram

Roembke U1707

Roembke M1820

Roembke N1421

U of WI 11031

[More Info](#)

Roembke T1537

Roembke N1304

EBVs

WWT	PWWT	PEMD	PFAT	Carcass Plus
2.6	5.1	.7	-2.4	141.6

Top 15% for PWWT & PEMD, top 4% for Carcass+. A younger lamb that is competing very well with balanced EBVs to boot. Sire is #1 Carcass & Young Sire, U1707 is #7 Proven Sire.

Hampshire Division

113 Roembke M1807 TW RR

NSIP ID # 693004-2018-1807M2

Born: 2/23/2018

Hampshire

Ram

U of WI 15103

Roembke U1707

Roembke N1334

Cabaniss 076-12

[More Info](#)

Roembke B1619

Roembke C1036

EBVs				
WWT	PWWT	PEMD	PFAT	Carcass Plus
-5	-1.7	1.2	.13	105.8

Top 10% for PEMD. A level, wide top, square hipped ram with depth and leg for those seeking club lambs. He is a grandson of our Cabaniss ram. We used M1807 on 25% of the flock last fall, retaining females and a top son or I would not be selling him.



114 Roembke M1914 TW

NSIP ID # 693004-2019-1914R2

Born: 2/23/2018

Hampshire

Ewe

Roselawn Legacy 561

Roselawn Legacy 1749

Pfliger 505

U of WI 15103

[More Info](#)

Roembke U1752

Roembke N1421

EBVs				
WWT	PWWT	PEMD	PFAT	Carcass Plus
2.0	3.2	.6	-1.5	128.8

Top 25% WWT, top 30% PWWT, 20% PEMD and 15% Carcass+. Really like the depth, volume & tops from our Roselawn Legacy ram. Check this one out!

115 Roembke M1943 TW

NSIP ID # 693004-2019-1943R2

Born: 2/23/2018

Hampshire

Ewe

Roselawn Legacy 561

Roselawn Legacy 1749

Pfliger 505

U of WI 11031

[More Info](#)

Roembke T1535

Roembke N1334

EBVs				
WWT	PWWT	PEMD	PFAT	Carcass Plus
2.0	3.0	.9	-1.8	132.7

Top 25% WWT, top 40% PWWT, 15% PEMD and 10% Carcass+. Need to debut some of the great females from our Roselawn Legacy (formerly Hubbard) bloodlines. They are awesome!

Roembke 1914
Lot 114



Roembke 1943
Lot 115



Hampshire Division



Drewry Farms

Don Drewry
3105 250 St E
Farmington, MN 55024
651-894-3466
drewrydonald@gmail.com

**Lot
116-117**

116 Drewry 18341

NSIP ID # 693015-2018-188341

Born: 10/14/2018 **Hampshire** Ram

Houghton 11-1147

3-DownBuck Houghton

Houghton 11-1540

Miller 0-171

[More Info](#)

U of WI 14-002

U of WI 06-019

EBVs

WWT	PWWT	PEMD	PFAT	Carcass Plus
2.02	3.45	-.47	-.43	113.13

Another stud ram prospect out of my U of WI Miller daughters. They proved me wrong and cycled after I weaned their lambs in early 2018 and I got several fall lambs. 3-DownBuck lambs have a good combo of natural thickness, good growth and eye appeal. Several of his lambs have placed well at shows, several of his lambs have had high EBVs. If you want above average growth and above average frame size, this could be your buck.

117 Drewry 19982

NSIP ID # 693015-2019-19982

Born: 1/4/2019 **Hampshire** Ewe

Miller 0-125 "King Tut"

Ebert 7478 "Ramses"

Ebert 6404

Kleinert 4834

[More Info](#)

Drewry 17142

Knutson 156

EBVs

WWT	PWWT	PEMD	PFAT	Carcass Plus
0.1	0.83	1.22	-0.38	118.69

It's an old story but even though this ewe has the type of loin I want to keep, I can't keep all the ewes I want to keep. She is that nice combo of well-linked into the NSIP pool but her two grandsires are outside the NSIP pool. We consigned her twin brother to Sedalia to sell in the slick sheared ram lamb class.

Suffolk Division



Blonquist Bros & Sons

Blonquist Bros & Sons
570 East Border Station Road
Coalville, UT 84017
435-640-3829
gavin.blonquist@serviceking.com

**Lot
118**

118

BB 1807

NSIP ID # 690128-2018-001807

Born: 2/1/2018

Suffolk

Ram

BH 3131

Bunker Hill 3283

BH 3007

BH 2774

[More Info](#)

Blonquist Bro 452

BB 19-933

EBVs

WWT	PWWT	PEMD	PFAT	Carcass Plus
6.1	12.0	0.2	-3.6	171

BB1807 is a moderate framed ram that stands on great feet and legs and has a really nice way of moving. For our area, rams have to be able to navigate rough country to get their job done. This has been a big focus for our flock. BB1807 is a product of 13 years of using Bunker Hill genetics. The full brother to his sire (BH3283) was used last fall at Bunker Hill Farm in Ohio. BH3007 has been a sure shot producing top indexing lambs every year in the Bunker Hill flock. We have her twin brother (BH3006) at the farm in Utah and have some fantastic daughters from him that had their first crop of lambs this year. We feel that this is a great line of genetics that should produce some fantastic daughters and some high growth, and high capacity rams that work in all aspects of the industry.



Blonquist 1807

Lot 118



Suffolk Division



Mint Gold Ranch

Dale and Judy Dobberpuhl
5807 County Road X
DePere, WI 54115
920-864-7732
mintgoldranch@gmail.com

Lot
119-127

119 MGR 8312

NSIP ID # 690035-2018-008312

Born: 1/20/2018 **Suffolk** Ram

MSU 4137

Reau 607 RR

MSU 5113

MSU 9170

MGR 4139

KIMM 10109

EBVs				
WWT	PWWT	PEMD	PFAT	Carcass Plus
6	9.1	-.2	-4	160

We purchased Reau 607 at this sale 2 years ago. He proved to be one of Brenda's best rams that year. The dam 4139 is by the MSU 9170 "Sparty" ram that Bunker Hill had used for several years and a trait leader for nearly a decade. 4139's dam, Kimm 10109, is the triplet to Kimm10107 ewe that Bob kept about 5 stud rams from. 8312 represents the cream of the crop from 4 prominent flocks of the Suffolk breed. The picture of 8312 is as a lamb and all our other entries are by 8312. Check out our website for more details and pics of his other sons. www.mintgoldranch.com

120 MGR 9338

NSIP ID # 690035-2019-009338

Born: 1/30/2019 **Suffolk** Ram

Reau 607

MGR 8312

MGR 4139

MSU 0152

[More Info](#)

MGR 3140

MSU 1169

EBVs				
WWT	PWWT	PEMD	PFAT	Carcass Plus
5.3	9.6	-0.9	-3.6	150.3

Here is a ram with good growth in PWWT. Plus he is very correct. This ram comes from some of the best of the old MSU genetics.

121 MGR 9312

NSIP ID # 690035-2019-009312

Born: 1/19/2019 **Suffolk** Ram

Reau 607

MGR 8312

MGR 4139

MGR 5352

[More Info](#)

MGR 7312

MGR 1021

EBVs				
WWT	PWWT	PEMD	PFAT	Carcass Plus
5.6	8.4	-.7	-2.5	144.2

Here is a ram with good growth. He was 185 lbs in 139 days (1.25 lb/day). His dam 7312 has a beautiful udder and teats.

Suffolk Division





Suffolk Division

122

MGR 9301

NSIP ID # 690035-2019-009301

Born: 1/7/2019

Suffolk

Ram

Reau 607

MGR 8312

MGR 4139

[More Info](#)

MGR 4206

MGR 5336

MGR 2077

EBVs				
WWT	PWWT	PEMD	PFAT	Carcass Plus
3.5	4.5	1.0	-2.0	143.7

9301 is a maternal brother to the yearling ram also entered. The dam 5336, has been a strong influence to our growth side of the flock. In her 4 lambings, she has produced 8 lambs. She and one of her daughters will continue producing in the flock of Randy Hodges to continue producing an NSIP flock.

123

MGR 9333

NSIP ID # 690035-2019-009333

Born: 1/28/2019

Suffolk

Ram

Reau 607

MGR 8312

MGR 4139

[More Info](#)

MGR 5352

MGR 7324

MGR 9023

EBVs				
WWT	PWWT	PEMD	PFAT	Carcass Plus
5.0	7.6	-0.2	-2.7	146.1

The dam is an excellent milker and the twins grew well. With a PWWT of 7.6, this ram will produce the growth in the lambs for more \$'s!



Lot 123





Suffolk Division

124

MGR 9320

NSIP ID # 690035-2019-009320

Born: 1/20/2019

Suffolk

Ewe

Reau 607

MGR 8312

MGR 4139

[More Info](#)

MGR 5352

MGR 6382

MGR 4109

EBVs				
WWT	PWWT	PEMD	PFAT	Carcass Plus
5.8	8.7	-0.9	-3.0	145.2

This ewe lamb was the second largest at scanning 7th of June at 157 lbs. With a 8.7 PWWT, the lambs will really grow.

125

MGR 9329

NSIP ID # 690035-2019-009329

Born: 1/24/2019

Suffolk

Ewe

Reau 607

MGR 8312

MGR 4139

[More Info](#)

Slack 9287

Kimm 17227

Kimm 11091

EBVs				
WWT	PWWT	PEMD	PFAT	Carcass Plus
3.6	5.4	-0.2	-2.6	135.7

The dam is an outcross in our flock. She has a perfect udder and teats.

126

MGR 9342

NSIP ID # 690035-2019-009342

Born: 1/30/2019

Suffolk

Ewe

Reau 607

MGR 8312

MGR 4139

[More Info](#)

MGR 5352

MGR 6384

MGR 3005

EBVs				
WWT	PWWT	PEMD	PFAT	Carcass Plus
4.7	6.6	0.2	-2.2	145.4

With a PWWT of 6.6, she will be a solid ewe for anyone's flock.

127

MGR 9353

NSIP ID # 690035-2019-009353

Born: 2/3/2019

Suffolk

Ewe

Reau 607

MGR 8312

MGR 4139

[More Info](#)

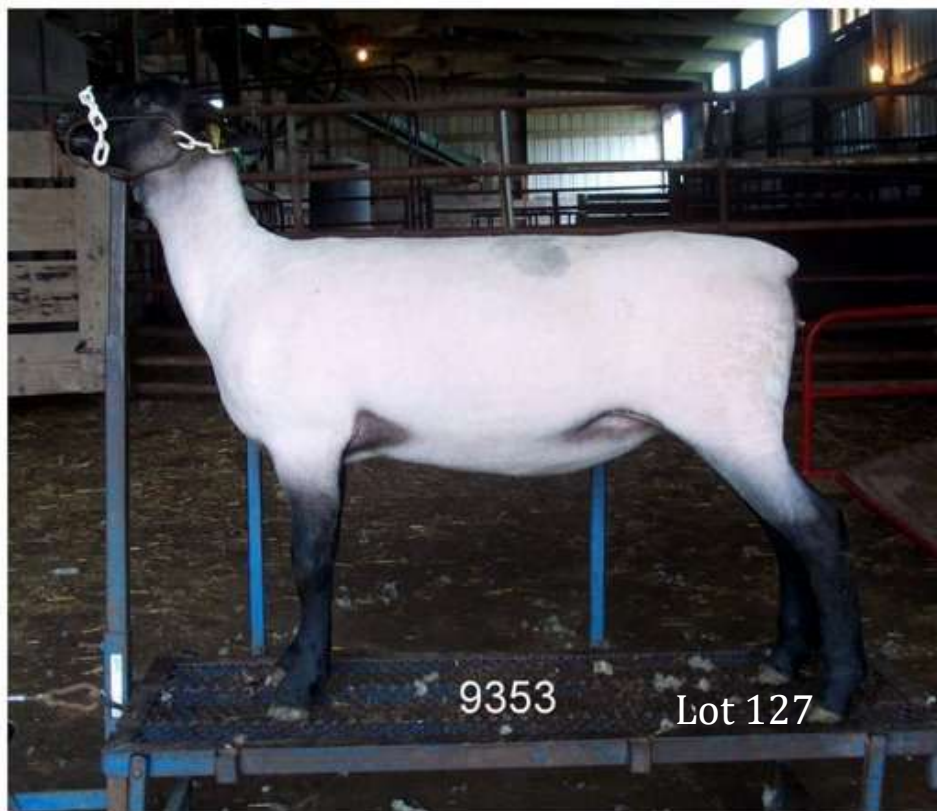
MGR 6322

MGR 7354

MSU 2151

EBVs				
WWT	PWWT	PEMD	PFAT	Carcass Plus
4.6	6.8	-0.7	-2.2	135.6

7354 has a good udder and teats. 9353 will be a solid ewe in the flock.



Suffolk Division



Reau Suffolks

Mark and Brenda Reau
17315 Ida West Road
Petersburg, MI 49270
734-755-8285
reau@msu.edu

Lot
128-130

128 Reau 648

NSIP ID # 690030-2019-00648

Born: 1/23/2019 Suffolk Ram

Bunker Hill 3040

Bunker Hill 3131

Bunker Hill 2846

MSU 4137

[More Info](#)

Reau 589

Reau 571

EBVs				
WWT	PWWT	PEMD	PFAT	Carcass Plus
4.9	10.1	-0.1	-2.5	155.3

Top 8% of the breed for Post Weaning Weight and top 15% for Carcass+ makes this ram a stellar option for a stud ram. He and his twin sister have been standouts in the flock since birth. I often hear breeders say they are looking for a ram with mass, bone, and is easy fleshing. You might find a ram that looks the part but you have no clue as to how he will perform. There is no guesswork with this ram. There are 17 years of NSIP production records on the sire side and 18 years on the dam side. Sire is in the top ten of the Proven Sire Trait Leader List for both PWW and Carcass +. He's big, rugged, and handsome, so take a look if you are looking for a solid performer.

129 Reau 661

NSIP ID # 690030-2019-00661

Born: 2/4/2019 Suffolk Ram

Bunker Hill 3040

Bunker Hill 3131

Bunker Hill 2846

MSU 4132

[More Info](#)

MSU 5127

MSU 3101

EBVs				
WWT	PWWT	PEMD	PFAT	Carcass Plus
4.5	9.6	0.0	-1.4	150

Top 9% of the breed for Post Weaning Weight makes this another outstanding ram to sire lambs that will grow. We are retaining his twin sister. We purchased some of the great MSU ewes back in 2015 before the program was dissolved and they have produced some excellent lambs.

130 Reau 664

NSIP ID # 690030-2019-00664

Born: 2/26/2019 Suffolk Ram

Reau 614

Reau 633

MSU 5123

MSU 4132

[More Info](#)

MSU 5113

MSU 2127

EBVs				
WWT	PWWT	PEMD	PFAT	Carcass Plus
4.6	9.2	0.8	-3.3	165.1

This may be one of the younger rams in the sale and he has lots of growth left in him. Top 9% of the breed for Post Weaning Weight and top 7% for Carcass+. He is a nice package of performance genetics accented by a beautiful Suffolk head.

Reau 648, 661

Left to right

More photos available early July



Suffolk Division



5Bs Farm LLC

Nick Babcock
12702 W Howe Road
Eagle, MI 48822
517-290-8337

thunder.119fa@hotmail.com

**Lot
131-132**

131 5Bs 053

NSIP ID # 690028-2019-000B53

Born: 2/20/2019 **Suffolk** Ram

C&S 1207

Culham & Stevens 1309

C&S 1165

MSU 3133

MSU 5103

MSU 9138

EBVs

WWT	PWWT	PEMD	PFAT	Carcass Plus
5.1	10.3	-0.5	-2.6	152.4

This February born triplet is from a Michigan State University dam. Sire is Culham & Stevens 1309 (twin brother to Alan's high selling ewe lamb at 2019 Center of the Nation Sale. WWT 7.1, PWWT 14.3, Carcass+ 167

132 5Bs 054

NSIP ID # 690028-2019-000B54

Born: 2/20/2019 **Suffolk** Ram

C&S 1207

Culham & Stevens 1309

C&S 1165

MSU 3133

MSU 5103

MSU 9138

EBVs

WWT	PWWT	PEMD	PFAT	Carcass Plus
4.7	10.0	-0.9	-1.8	143.2

This February born triplet is from a Michigan State University dam. Sire is Culham & Stevens 1309 (twin brother to Alan's high selling ewe lamb at 2019 Center of the Nation Sale. WWT 7.1, PWWT 14.3, Carcass+ 167

[More Info](#)

[More Info](#)

Suffolk Division



R & R Suffolks

Randy & Ruth Hodges
4408 Jones Road
North Branch, MI 48446
810-441-6218
hodgesrk@yahoo.com

**Lot
173**

173

R&R 616

NSIP ID # 690028-2019-00R616

Born: 3/6/2019

Suffolk

Ram

C&S 1207

Culham & Stevens 1309

C&S 1165

[More Info](#)

C&S 1161

Culham & Stevens 1210

C&S 938

EBVs				
WWT	PWWT	PEMD	PFAT	Carcass Plus
5.9	12.1	-1.0	-2.6	155.6

This ram lamb is sired by Culham & Stevens 1309 (twin brother to Alan's high selling ewe lamb at 2019 Center of the Nation Sale. This lamb is bred for fast growth as his grandfather – Culham & Stevens 1207 is a top ram in the breed for PWWT. This lamb's mother is one of the high selling ewes we purchased from Culham & Stevens in the 2017 Center of the Nation Sale. Call us for more information.



Culham & Stevens 1309

Lot 133

Sire to Lots 131 & 132 from 5Bs Farm LLC
and Lot 173 from R & R Suffolks

Suffolk Division



Culham & Stevens

Culham & Stevens
5108 E Howell Rd
Webberville, MI 48892
517-896-7378
culhamab@aol.com

Lot
133-139

133 C&S 1309

NSIP ID # 690025-2018-001309

Born: 2/9/2018 **Suffolk** Ram

Bunker Hill 3040

Culham & Stevens 1207

Culham & Stevens 939

MSU 4128

Culham & Stevens 1165

Culham & Stevens 965

EBVs				
WWT	PWWT	PEMD	PFAT	Carcass Plus
7.1	14.2	-1.3	-3.0	163.0

RR at codon 171. Twin sister was record selling Suffolk ewe here last year going to John Eagle of Idaho. 1309 was used by Hodges & Babcock last fall and they will have offspring in this sale (lot 131-132). Currently 1309 is the #3 PWWT proven sire in the history of the Suffolk breed behind his sire (#1) and his grandsire (#2). Over 3,000 sires evaluated.

134 C&S 1348

NSIP ID # 690025-2019-001348

Born: 1/9/2019 **Suffolk** Ram

Bunker Hill 3040

Culham & Stevens 1207

Culham & Stevens 939

MSU 4128

Culham & Stevens 1162

Culham & Stevens 956

EBVs				
WWT	PWWT	PEMD	PFAT	Carcass Plus
6.8	13.5	-1.5	-2.9	157.4

RR at codon 171. 1207 sired the top selling Suffolk ram and ewe here last year and is the breed's all time growth sire. At time of cataloging, #3 for PWWT EBV in the entire 2019 Suffolk NSIP ram lamb crop (over 550 ram lambs).



Culham & Stevens 1348
Lot 134

Suffolk Division

135

C&S 1351

NSIP ID # 690025-2019-001351

Born: 1/12/2019

Suffolk

Ram

Culham & Stevens 1229

Culham & Stevens 1287

Culham & Stevens 1149

Bunker Hill 3040

[More Info](#)

Culham & Stevens 1208

Culham & Stevens 939

EBVs				
WWT	PWWT	PEMD	PFAT	Carcass Plus
6.2	11.8	0.3	-3.9	174.7

RR at codon 171. Would be our next stud ram but we have nothing to breed him to. His sire is being retained at stud and his mother is twin to the 1207 ram we have used heavily the past 2 seasons. Last time we sold one for this reason I was at MSU. That ram was later named "Sparty", who went on to hold the breed's top carcass plus ranking sire title for nearly half a decade and helped put Bunker Hill Farms on the map. *Carpe Diem!*

Culham & Stevens 1351
Lot 135



Suffolk Division

136 C&S 1352

NSIP ID # 690025-2019-001352

Born: 1/9/2019

Suffolk

Ram

Culham & Stevens 1229

Culham & Stevens 1287

Culham & Stevens 1149

MSU 4128

Culham & Stevens 1176

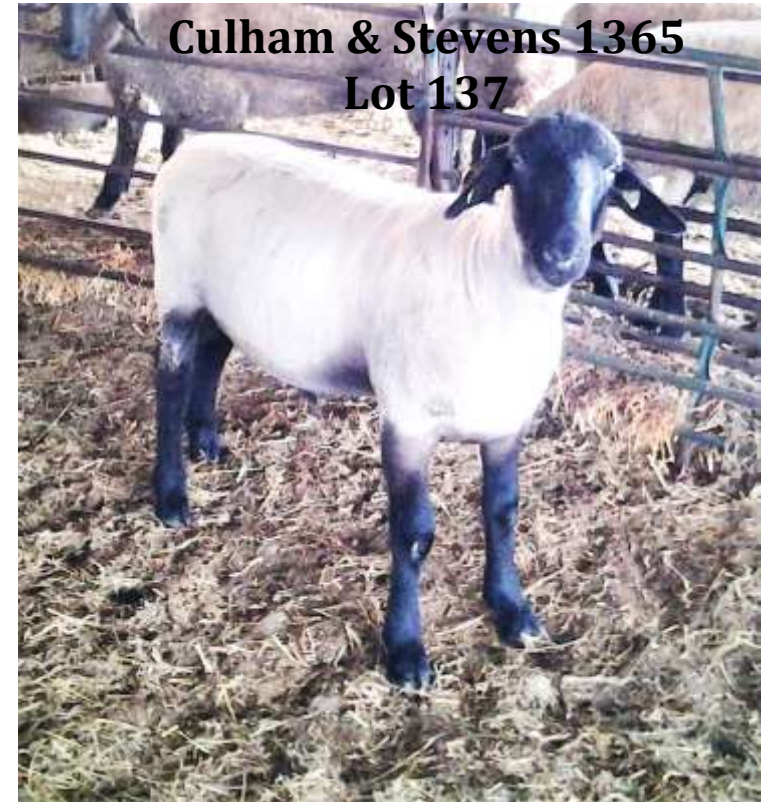
Culham & Stevens 975

EBVs				
WWT	PWWT	PEMD	PFAT	Carcass Plus
5.8	11.7	0.2	-3.5	170.5

Codon 171 RR. This ram is really coming on. Nearly a +12 for growth and positive for muscle. Not many of these around!



Culham & Stevens 1355
Lot 136



Culham & Stevens 1365
Lot 137

137 C&S 1365

NSIP ID # 690025-2019-001365

Born: 1/18/2019

Suffolk

Ram

Bunker Hill 3040

Culham & Stevens 1207

Culham & Stevens 939

MSU 6631

Culham & Stevens 1264

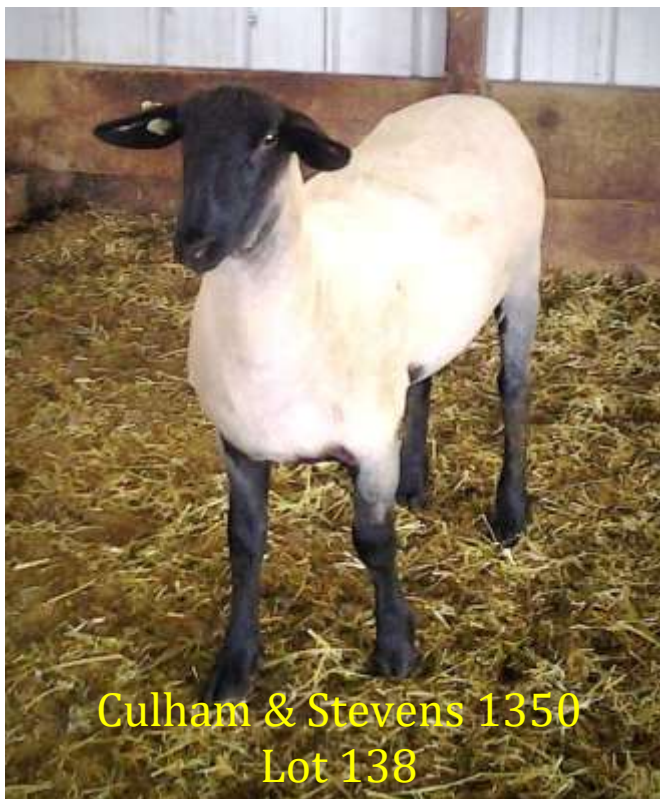
Culham & Stevens 1162

EBVs				
WWT	PWWT	PEMD	PFAT	Carcass Plus
6.8	13.5	-1.1	-3.6	165.3

RR at codon 171. At time of cataloging, #2 PWWT EBV in the entire 2019 Suffolk NSIP ram lamb crop (over 550 ram lambs)

[More Info](#)

Suffolk Division



Culham & Stevens 1350
Lot 138

138

C&S 1350

NSIP ID # 690025-2019-001350

Born: 1/9/2019

Suffolk

Ewe

Bunker Hill 3040

Culham & Stevens 1207

Culham & Stevens 939

MSU 4128

Culham & Stevens 1174

Bunker Hill 2641

EBVs				
WWT	PWWT	PEMD	PFAT	Carcass Plus
6.0	10.9	-1.1	-2.1	147.9

Codon 171 pending. Goes back to the full sister of Bunker Hill's "War Horse" on the dam side that we purchased in this sale in 2012. In the top 5% of the breed for growth.

139

C&S 1361

NSIP ID # 690025-2019-001361

Born: 1/14/2019

Suffolk

Ewe

Bunker Hill 3040

Culham & Stevens 1207

Culham & Stevens 939

MSU 0121

Culham & Stevens 1033

Culham & Stevens LB476

EBVs				
WWT	PWWT	PEMD	PFAT	Carcass Plus
5.0	9.6	-0.5	-2.3	148.5

Codon 171 pending. In the top 9% of the breed for growth. Might be docked longer than some are used to, likely better because of it.



Culham & Stevens 1361
Lot 139

[More Info](#)

Suffolk Division



Dry Sandy Sheep Co.

Matt & Amy Beals
2756 E 800 Rd.
Kirwin, KS 67644
402-200-0444

drysandysheep@gmail.com

Lot
140-148

140

Dry Sandy G010

NSIP ID # 690109-2019-00G010

Born: 1/24/2019

Suffolk

Ram

MSU 3103

MSU 4137

Krehbiels K364
VA Tech N221

[More Info](#)

Dry Sandy E040

Kimm 15346

EBVs				
WWT	PWWT	PEMD	PFAT	Carcass Plus
2.1	5.3	0.77	-2.2	141.2

141

Dry Sandy G033

NSIP ID # 690109-2019-00G033

Born: 1/31/2019

Suffolk

Ram

MSU 4137

Dry Sandy F005

Dry Sandy B63
Kimm 15346

[More Info](#)

Dry Sandy D30

Ulrich 53-13

EBVs				
WWT	PWWT	PEMD	PFAT	Carcass Plus
2.8	5.0	2.0	-3.3	160.9

142

Dry Sandy G035

NSIP ID # 690109-2019-00G035

Born: 1/31/2019

Suffolk

Ram

MSU 4137

Dry Sandy F005

Dry Sandy B63
Kimm 13081

[More Info](#)

Full Deck 75

Full Deck 352

EBVs				
WWT	PWWT	PEMD	PFAT	Carcass Plus
3.6	7.0	0.19	-2.9	150.3

Suffolk Division

143

Dry Sandy G042

NSIP ID # 690109-2019-00G042

Born: 2/2/2019

Suffolk

Ram

MSU 4137

Dry Sandy F005

Dry Sandy B63

Kimm 14050

[More Info](#)

Dry Sandy D49

Kimm 12202

EBVs

WWT	PWWT	PEMD	PFAT	Carcass Plus
2.9	5.5	0.22	-2.4	138.2

145

Dry Sandy G051

NSIP ID # 690109-2019-00G051

Born: 2/4/2019

Suffolk

Ram

MSU 3103

MSU 4137

Krehbiels K364

MSU 4132

[More Info](#)

Dry Sandy D21

Dry Sandy B39

EBVs

WWT	PWWT	PEMD	PFAT	Carcass Plus
1.4	2.8	0.3	-1.6	123.1

144

Dry Sandy G043

NSIP ID # 690109-2019-00G043

Born: 2/2/2019

Suffolk

Ram

MSU 3103

MSU 4137

Krehbiels K364

Kimm 13081

[More Info](#)

Full Deck 74

Full Deck 383

EBVs

WWT	PWWT	PEMD	PFAT	Carcass Plus
4.1	8.5	-0.1	-3.0	151.3

Suffolk Division

146 Dry Sandy G055

NSIP ID # 690109-2019-00G055

Born: 2/5/2019

Suffolk

Ewe

MSU 3103

MSU 4137

Krehbiels K364

[More Info](#)

MacCauley 2841

Kimm 15346

Kimm 9086

EBVs				
WWT	PWWT	PEMD	PFAT	Carcass Plus
1.4	2.8	0.3	-1.6	123.1

147 Dry Sandy G064

NSIP ID # 690109-2019-00G064

Born: 2/9/2019

Suffolk

Ewe

Kimm 13084

Kimm 14032

Kimm 12091

[More Info](#)

MSU 3173

Dry Sandy E081

Dry Sandy C12

EBVs				
WWT	PWWT	PEMD	PFAT	Carcass Plus
3.5	6.7	0.1	-3.8	147.3

148 Dry Sandy G071

NSIP ID # 690109-2019-00G071

Born: 2/4/2019

Suffolk

Ewe

MSU 3103

MSU 4137

Krehbiels K364

[More Info](#)

MSU 4125

Dry Sandy E020

Full Deck 382

EBVs				
WWT	PWWT	PEMD	PFAT	Carcass Plus
4.5	9.1	-2.45	-2.2	123.3

Suffolk Division



JMG Suffolks

Jeremy Geske
31307 171st Ave
New Prague, MN 56071
612-756-1200
jeremy.geske@gmail.com

Lot
149-152

149

JMG 1922

NSIP ID # 690042-2019-1922RR

Born: 2/21/2019

Suffolk

Ram

MSU 2124

JMG 1851 "Hector"

JMG 1339RR

JMG 1433RR

[More Info](#)

JMG 1539

JMG 1454RR

EBVs

WWT	PWWT	PEMD	PFAT	Carcass Plus
3.32	6.4	-0.9	-1.2	124.7

Structurally sound and balanced to go along with respectable growth EBVs.

150

JMG 1919

NSIP ID # 690042-2019-1919RR

Born: 2/20/2019

Suffolk

Ewe

MSU 2124

JMG 1860RR

JMG 1549RR

MSU 0152

[More Info](#)

JMG 1540RR

JMG 1343RR

EBVs

WWT	PWWT	PEMD	PFAT	Carcass Plus
2.7	5.7	-0.76	-1.1	122.3

Fortunate to have a great crop of ewe lambs this year so we can offer some good ones for sale. Keeping this one's triplet sister for ourselves. Mother raised all 3 lambs unassisted.

Suffolk Division

151 JMG 1925

NSIP ID # 690042-2019-1925RR

Born: 2/27/2019

Suffolk

Ewe

MSU 2124

JMG 1851RR "Hector"

JMG 1339RR

[More Info](#)

Benda 2035 "Lucky Stripe"

Pearson 5-49

Pearson 0-54

EBVs

WWT	PWWT	PEMD	PFAT	Carcass Plus
2.2	4.8	-0.4	-0.8	120.6

Really liked this ewe lamb from the start. Had a massive growth spurt after weaning and was going to be in our show flock. Unfortunately, she has a bit too much dark fiber in her fleece for that. If you can live with that, you can get yourself a great production ewe. Her mother raised all 3 lambs unassisted.

152 JMG 1926

NSIP ID # 690042-2019-1926RR

Born: 2/27/2019

Suffolk

Ewe

MSU 2124

JMG 1851RR "Hector"

JMG 1339RR

[More Info](#)

Benda 2035 "Lucky Stripe"

Pearson 5-49

Pearson 0-54

EBVs

WWT	PWWT	PEMD	PFAT	Carcass Plus
1.4	3.4	-0.3	-0.5	114.2

Triplet sister to the ewe above—not quite as fast growing but she is clean fleeced. Genetics are the same. Buy both and add a solid genetic package to your flock.



Russell Sheep Company LLC

Jeremy Russell, Paul & Diane Russell

3500 E CR 700 N

Easton, IN 47338

765-749-3100 (Jeremy)

765-749-0287 (Diane)

farmer1224@gmail.com

www.russellsheepcompany.com

**Lot
153-160**

153 RSC 9525

NSIP ID # 690119-2019-199525

Born: 1/15/2019

Suffolk

Ram

RSC 15094 Top Gun

RSC 8501 Curious George

RSC 11086

Kimm 6150

[More Info](#)

RSC 5042

RSC 10011

EBVs

WWT	PWWT	PEMD	PFAT	Carcass Plus
-0.56	2.551	-1.752		137.25

RRNN, 9525 is a ram lamb that balances well and has a calm disposition. We considered saving him for the show-ring, but decided to offer him here instead.

RSC 9525
Lot 153



Suffolk Division

154

RSC 9536

NSIP ID # 690119-2019-199536

Born: 1/15/2019

Suffolk

Ram

J C J OW 616150

RSC 6510 Shamus

RSC 10016

Slack 3172

[More Info](#)

RSC 4065

RSC 100007

EBVs

WWT	PWWT	PEMD	PFAT	Carcass Plus
0.952	3.1	1.1	-1.55	131.95

RRNN The dam of ram 9536 and her twin sister consistently produce structurally correct lambs with powerful hind saddles.

RSC 9536
Lot 154



RSC 9543
Lot 155

155

RSC 9543

NSIP ID # 690119-2019-199543

Born: 1/18/2019

Suffolk

Ram

Kimm 14015

Kimm BZ2005-17204

BZ 2005

RSC 144076

[More Info](#)

RSC 5136

RSC 4038

EBVs

WWT	PWWT	PEMD	PFAT	Carcass Plus
0.61	0.81	3.09	-2.46	149.5

RRNN Here is another entry from a ewe line that consistently raises multiples with outstanding show and production potential.

Suffolk Division



RSC 9554
Lot 156

156

RSC 9554

NSIP ID # 690119-2019-199554

Born: 1/20/2019

Suffolk

Ram

J C J OW 616150

RSC 6510 Shamus

RSC 10016

RSC 9060

[More Info](#)

RSC 7080

RSC 100019

EBVs				
WWT	PWWT	PEMD	PFAT	Carcass Plus
2.21	5.23	0.34	-2.4	137.08

RRNS Ram 9554 has the right structure, impressive growth, shape in all the right places and a pedigree that we love. His grand-dam turned heads at NAILE in 2010 then went on to produce many daughters for our flock, plus one of our favorite stud rams from the past – Roscoe 14019

157

RSC 9556

NSIP ID # 690119-2019-199556

Born: 1/20/2019

Suffolk

Ram

Kimm 14015

Kimm BZ2005-17204

BZ 2005

RSC 15094 Top Gun

[More Info](#)

RSC 7002

RSC 3050

EBVs				
WWT	PWWT	PEMD	PFAT	Carcass Plus
1.78	4.41	1.25	-2.62	144.5

RRNN Dam 7002 blends Russell Sheep genetics with a bit of RennVue and Kimm genetics. We really like the outcome and think you will too.



RSC 9556
Lot 157

Suffolk Division

158

RSC 9566

NSIP ID # 690119-2019-199566

Born: 1/21/2019

Suffolk

Ram

Kimm 14015

Kimm BZ2005-17204

BZ 2005

RSC 4004

[More Info](#)

RSC 6032%

RSC 11095

EBVs

WWT	PWWT	PEMD	PFAT	Carcass Plus
1.14	2.36	1.92	-2.54	143.14

RRNN Ram 9566 is registered at 87.5% - the last step before pure registration. Therefore, his offspring from a purebred Suffolk will go in the pure flock book. We like his overall structure and power. Plus there is an impressive production record on the dam side...doubles, triples even quads.



RSC 9578
Lot 159



159

RSC 9578

NSIP ID # 690119-2019-199578

Born: 1/24/2019

Suffolk

Ram

RSC 10049 BMW

RSC 15094 Top Gun

RV 5056

RSC 14019 Roscoe

[More Info](#)

RSC 6040

RSC 3009

EBVs

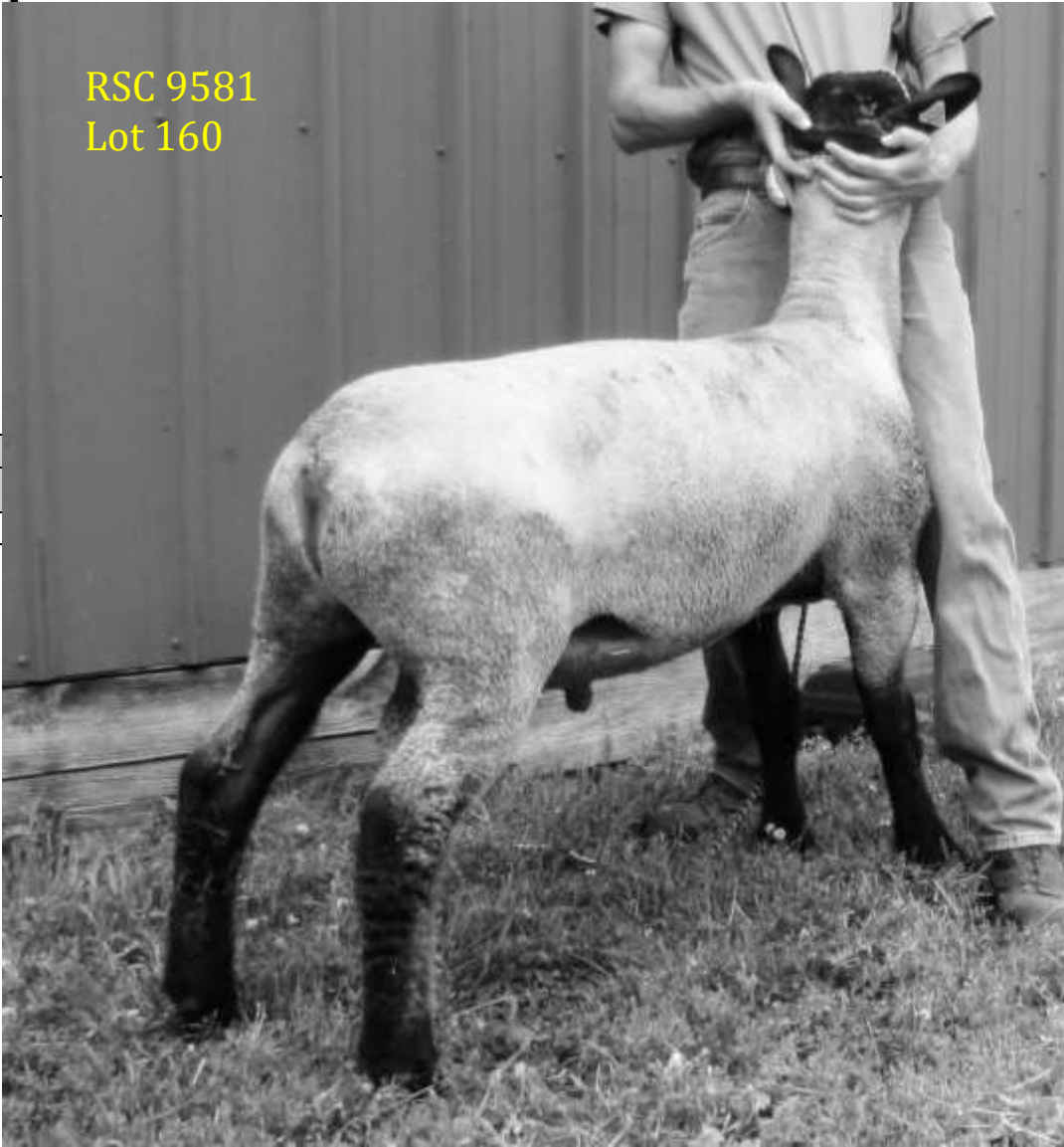
WWT	PWWT	PEMD	PFAT	Carcass Plus
1.41	5.27	0.099	-2.23	131.9

RRNN, this ram lamb and his twin brother have come on strong in their post weaning performance.

Suffolk Division

160	RSC 9581			
	NSIP ID # 690119-2019-199581			
Born: 1/25/2019		Suffolk	Ram	
RSC 10049 BMW				
RSC 15094 Top Gun				
RV 5056			More Info	
Slack 3172				
RSC 4025%				
RSC 11067				
EBVs				
WWT	PWWT	PEMD	PFAT	Carcass Plus
3.19	8.04	-0.72	-2.26	136.5

RRNN, Ram 9851 and his sister (which we are keeping) are a couple of our favorites from the day they were born. They weaned off at 101 and 107 lbs and have kept gaining strong from there. Plus they are built well from the ground up, with lots of muscle shape. He is registered at 77.5% Suffolk.



SAMM Division



Kitzan Sheep

Dwight & Gwendolyn Kitzan
18293 Sheep Corner Road
Nisland, SD 57762
605-257-2105
Shepherd@kitzansheep.com

**Lot
161**

Benefits of Cross Breeding with a Terminal Sire
It's often said, "there's no such thing as a free lunch" ...especially in agriculture. However, simply using crossbreeding with terminal sires in your commercial production system truly is a "free lunch" in the sheep industry by increasing pounds of lamb marketed, carcass quality and profitability. Simply crossbreeding 2 pure breeds can increase conception rate and litter size by almost 3%, lamb survival by 9.8% and pounds of lamb weaned per ewe exposed by almost 18%. Utilizing a 3-breed cross can add an additional 8.7% to conception rate, 14.7% more lambs weaned and an extra 18% pounds weaned per ewe on top of the original increase in heterosis(Thomas, 2006)! Adding in the extra production due to selection with EBVs can make that "free lunch" even more appetizing!

161

85593

NSIP ID # 486001-2018-KS5593

Born: 11/11/2018

SAMM

Ram

KS 53688

JK 60672

JK 40231

AU Shirlee Down 0521

KS 43193

KS 1056

EBVs					
WWT	PWWT	PEMD	PFAT	Carcass Plus	SAMM
3.1	3.4	0.6	00	126.26	120.6

Fall born US Range Index 105.6. He was born a triplet raised a twin because we grafted the smaller female onto another ewe. Our rams are coming in their working clothes. Weaned 2/14/2019 at 94 pounds. PWWT 5/1/2019 160 lbs, EMD 33 mm and fat 5mm.

SAMM Division



JHK Sheep

Joshua & Heather Kitzan
18025 Mail Road
Nisland, SD 57762
605-430-3560

Heather@kitzansheep.com

**Lot
162-163**

162

JK 1325

NSIP ID # 486001-2018-JK1325

Born: 11/11/2018

SAMM

Ram

KS 53688

JK 60672

JK 40231

KS 32684

KS 74789

KS 2139

EBVs

WWT	PWWT	PEMD	PFAT	Carcass Plus	SAMM
2.6	2.8	0.8	-0.1	125.4	116.8

US Range Index 104.1. Fall born from a 2017 model ewe (ewe lamb)
Our rams will not be fit but coming in their working clothes.
Weaned 2/14/2019 at 96 lbs and ADG 1.07 lbs/day. PWWT
5/1/2019 162 lbs

163

JK 1330

NSIP ID # 486001-2018-JK1330

Born: 11/11/2018

SAMM

Ram

KS 53688

JK 60672

JK 40231

KS 40176

KS 70991

JK 40250

EBVs

WWT	PWWT	PEMD	PFAT	Carcass Plus	SAMM
3.2	3.4	-0.3	-0.3	117.5	118.3

US Range Index 105.4. Fall born from a 2017 model ewe (ewe lamb)
Our rams will not be fit but coming in their working clothes. Twin
Riased a Twin. Weaned 2/14/2019 at 90 lbs . Post Weaning Weight
on 5/1/2019 was 158 lbs with EMD of 30mm and fat of 4mm. JK
81330 twin sister JK 81331 WW was 90 lbs so the dam weaned 180
lbs in 90 days for an ADG of 1.0. lbs/day each.

Rambouillet Division



Benz Rambouillet

Matt & Amy Benz
24820 Oregon Trail
St. Marys, KS 66536
701-870-4135

benzmatt@hotmail.com

Lot
164-165

164 Benz 3192

NSIP ID # 612013-2018-BE3192

Born: 9/26/2018

Rambouillet

Ram

Impulse

Benz 2898

Benz 2605

Fred

Benz 2629

Cunningham

EBVs

WWT	PWWT	NLB	NLW	US Range
0.37	0.97	2.7	1.9	102.4

20.6 Microns. Thick, big bodied ram.

165 Benz 3201

NSIP ID # 612013-2018-BE3201

Born: 9/30/2018

Rambouillet

Ram

Impulse

Benz 2898

Benz 2605

Pendleton

Benz 2604

Benz 2298

EBVs

WWT	PWWT	NLB	NLW	US Range
-0.15	0.07	3.4	2.5	100.93

22.9 Microns.

Rambouillet Division



Tailwind Farm

Tim and Beth Miller
12827 West State Road 81
Beloit, WI 53551
608-751-2963
Tailwindfarm@gmail.com

Lot
166-167

166

TW 8057

NSIP ID # 612033-2018-TW8057

Born: 9/26/2018

Rambouillet

Ram

TW 6003

Chapman 5898

EBVs				
WWT	PWWT	NLB	NLW	US Range
-0.4	-0.6	2.0	2.0	99.99

Horned,RR, fall born ram. Phenotypically excellent. Fleece data available.



167

TW 8025

NSIP ID # 612033-2018-TW8025

Born: 9/26/2018

Rambouillet

Ram

Erk 477

U of WI 17-614

EBVs				
WWT	PWWT	NLB	NLW	US Range
-0.4	-0.7	-4	-3	97.5

Horned,RR, triplet born ram. Phenotypically excellent. Fleece data available.



Texel Division



West Virginia University

Scott Bowdridge
1194 Evansdale R.
2213 Ag Sciences Building
Morgantown, WV 26506
304-293-2003

Lot
168-169

scott.bowdridge@mail.wvu.edu

168

WVU 8061

NSIP ID # 697009-2018-008061

Born: 3/5/2018

Texel

Ram

Bettonfield Jaguar

Portland Prairie 661

Portland Prairie 563

[More Info](#)

WVU 1044

EBVs				
WWT	PWWT	PEMD	PFAT	Carcass+
1.7	3.6	0.18	-1.9	126.4

Sired by Portland Prairie 661, our 2017 ram purchase from the Center of the Nation Sale, WVU 8061 combines growth and muscle in a moderate and stout phenotypic package. His full sibling, WVU 9040 is consigned to the Eastern NSIP Sale. This mating has consistently worked. As a ram lamb, his post weaning fecal egg count was only 50 eggs/g (typically FEC is not a concern until over 1000 eggs/g). Unfortunately the contemporary group average was not high enough to generate a FEC EBV.

169

WVU 8065

NSIP ID # 697009-2018-008065

Born: 3/5/2018

Texel

Ram

Bettonfield Jaguar

Portland Prairie 661

Portland Prairie 563

[More Info](#)

Fisher Texel P38

EBVs				
WWT	PWWT	PEMD	PFAT	Carcass+
1.2	1.9	-0.1	0.05	107.7

Another 661 sired yearling, WVU 8065 is a twin out of a ewe purchased from Fisher Texels of Idaho. As a ram lamb, his post weaning fecal egg count was only 300 eggs/g (typically FEC is not a concern until over 1000 eggs/g). Unfortunately the contemporary group average was not high enough to generate a FEC EBV.



WVU 8061
Lot 168



WVU 8065
Lot 169

Texel Division



Portland Prairie Texels

Charles & Deborah Wray
11636 Snake Point Drive
Caledonia, MN 55921
507-458-0515
wray@acegroup.cc

**Lot
170**

170

Portland Prairie 853

NSIP ID # 697001-2018-000853

Born: 4/5/2018

Texel

Ram

BGS 303

LTC 121161 TRADEMARK

LTC 027

[More Info](#)

BTG 059

Portland Prairie 396

PP 064

EBVs				
WWT	PWWT	PEMD	PFAT	Carcass+
2.4	5.0	00	-1.2	127.6

WFEC -8.5 This yearling ram is out of newly imported semen from the great Scottish ram Cambwell Trademark. 0853 is a heavily muscled, good growth rate Texel with a favorable weaning fecal egg count EBV. A great terminal sire for a pasture based system. For more info, visit www.portlandprairietexels.com.

Katahdin Division



Doyle Weaver Katahdins

Doyle Weaver
14104 S 1450 Rd.
Nevada, MO 64772
417-667-5294
doyle_judyweaver@yahoo.com

**Lot
171**

171

DW 1927

NSIP ID # 640157-2019-DW1927

Born: 1/21/2019

Katahdin

Ram

DOC P414

CSA 626

LHF 129
HLB 41

[More Info](#)

DW 1403

DW 0728

EBVs

WWT	MWWT	PWWT	NLB	NLW	USA HAIR
0.7	0.05	1.6	10.4	9.3	104.6

This is our 3rd year in NSIP. Dam is ugly but the real deal when she raises lambs. Sire is our top indexing herd ram.

Katahdin Hair Sheep: A Breed Whose Time has Come!
Katahdin Sheep work in a variety of production systems as a low maintenance, easy care sheep. Dr. David Nottter of Virginia Tech, a leading sheep geneticist in the U.S. stated the future success of the sheep industry will depend on a highly productive sheep that is prolific with good mothering ability, low maintenance, exhibits parasite resistance and one that either requires no shearing or produces the highest quality fiber.

Katahdin sheep from NSIP flocks have been selected using EBVs for all of these traits to produce a highly prolific flock that requires less inputs, less deworming and will work in a variety of production systems throughout the U.S.

DW 1927
Lot 171



Siremax Division



Sheep Improvement Co.

Dr Cynthia Wolf & Kelley O'Neil
29182 Hartwood Dr.
Rushford, MN 55971
507-450-5453
Wolfx006@umn.edu

Lot
172,174

174

17075

NSIP ID # CT00SM-2017-B17075

Born: 4/2017

Siremax

Ram

172

17097

NSIP ID # CT00SM-2017-B17097

Born: 4/2017

Siremax

Ram

EBVs

WWT	PWWT	PEMD	PFAT	Carcass +
12.5	18.6	1.5	-0.8	214.4

Again, these 2 year old rams are not leftovers. They were used here as ram lambs and again as yearlings. They will settle more ewes than 2 or 3 ram lambs and will outlast any blackface rams here.

EBVs

WWT	PWWT	PEMD	PFAT	Carcass +
13.3	19.9	1.6	-1.1	223.6

These 2 year old rams will breed twice as many ewes as ram lambs. These are not leftovers. Used here as a ram lamb and again as a yearling. Bred by Kirk and Judy Atkins, Siremax breeders from Broadus, MT.

Why are Siremax™ terminal sires better?

- Guaranteed heavy muscling and lower cost of gain
- Better fitness and longevity compared to traditional terminal sires
- Lower Ram Depreciation Expense & Lower Ram Cost per ewe per year
- Virtually No Dystocia, even when used on smaller mature weight hair ewe breeds and crosses
- Superior Lamb Vigor
- Easy Keepers
- Easy-going Temperament
- Developed and Maintained on Forage: So will have a longer productive life
- Provide more heterosis in lambs when used on black-faced cross ewes

Don't let tradition impede your profitability; half-Siremax™ lambs can be easily discerned and sorted at weaning, regardless of face color. Don't make up your mind closed.

Do your finished lambs really need to weigh more than 185 pounds like the Siremax™-sired lamb pictured below at Y. G 2.5 (whose mother weighed lots less)?

Our Siremax™ flock's higher distribution of the myostatin gene is partially responsible for the higher yields of closely trimmed, semi-boneless retail product (what consumers will not leave on their plate). A quarter century of selection using Lambplan data and unchanging objectives helps.



Cindy Wolf & Kelley O'Neill

29182 Hartwood Drive, Rushford MN 55971

wolf-oneill@siremax.com

Cindy 507-450-5453, Kelley 507-458-6244

www.sheepimprovement.com



NSIP

National Sheep
Improvement
PROGRAM

America's
GENETIC FOUNDATION
FOR A PROFITABLE

Sheep
INDUSTRY