

13th Annual



NSIP
National Sheep
Improvement
PROGRAM

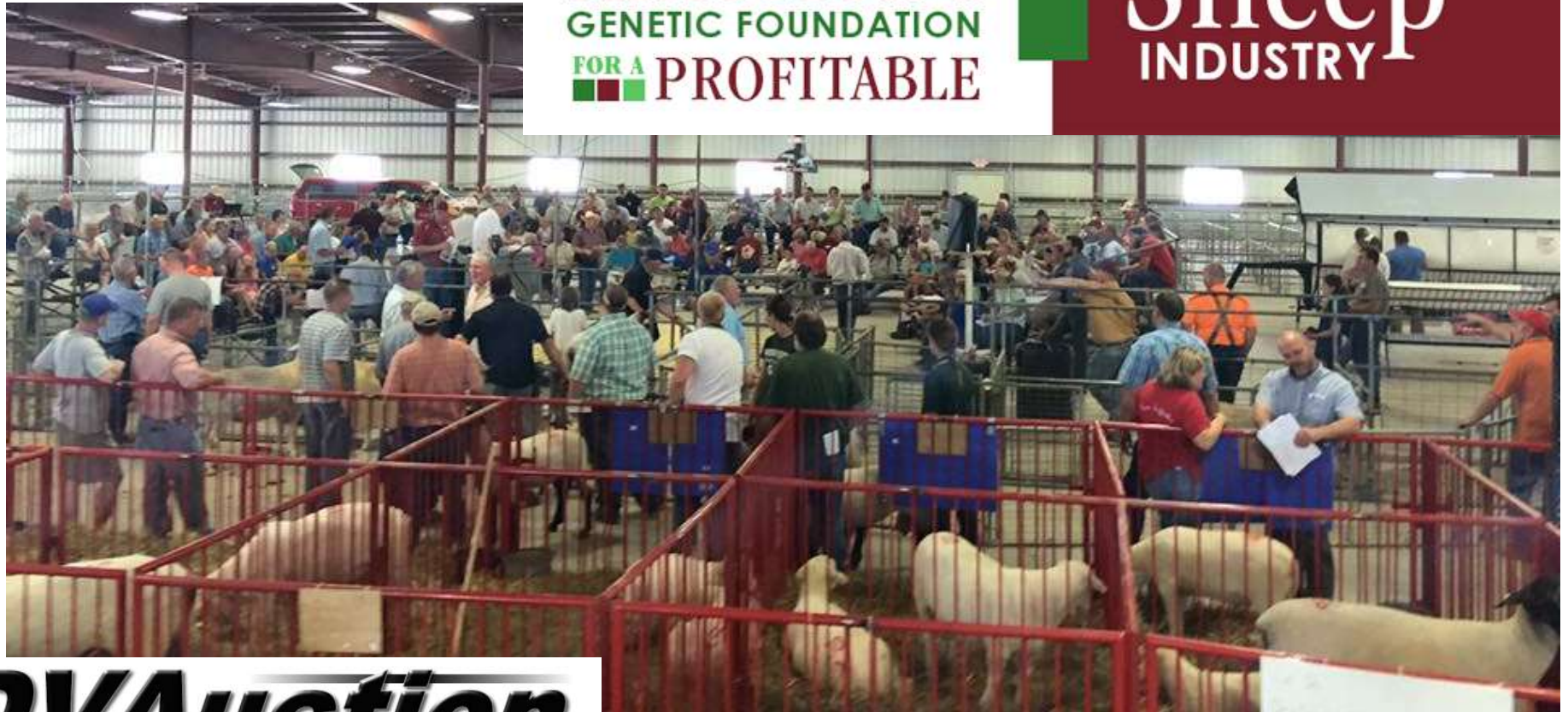
Center of the Nation NSIP Sheep Sale

July 28, 2018

Clay County Fairgrounds – Spencer, IA

America's
GENETIC FOUNDATION
FOR A PROFITABLE

Sheep
INDUSTRY



DVAuction
Broadcasting Real-Time Auctions

Center of the Nation NSIP Sheep Sale

1:00 p.m. July 28, 2018

Clay County Fairgrounds, Spencer, IA

Sale Manager and Contact: Rusty Burgett (515)-708-8850

Auctioneer: Scott Courtney,

Courtney Sales, LLC (563) 380-1318

Sale Day Phone: Rusty Burgett (515) 708-8850

Offering 189 Head of the Top NSIP Sheep from across the United States.

Sale Location: Clay County Fairgrounds- Spencer, IA
1401 4th Ave W. Spencer, IA in the swine barn located in the
center of the fairgrounds.

Hotel Accommodations: AmericInn Hotel (712) 262-7525,
EconoLodge (712) 262-6100, Days Inn (712) 580-4077,
Holiday Inn Express (712) 580-200

Inspection of Sheep: Sheep available for viewing starting at
4:00 p.m. Friday at the fairgrounds.

Health: All animals will be accompanied by an interstate
health paper.

Terms: Cash or Check. All sheep must be paid for before
leaving the grounds.

Liability: All persons attending this sale do so at their own
risk, legal or otherwise for their safety or the behavior of the
animals. The owners, auction service and sale staff assume no
liability for property loss or any accidents that may occur.

Announcements: From the block will take precedence over
the catalog. Buyers unable to attend may send their bids to
field representative or auctioneer.

Dear Sheep Producers,

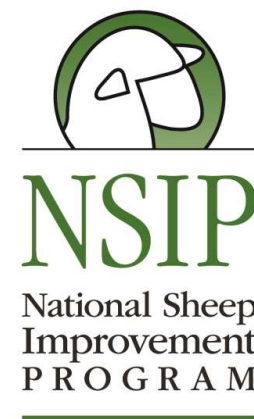
On behalf of the National Sheep Improvement Program
and the sale committee, we would like to invite you to our 13th
annual Center of the Nation NSIP Sale! This sale will be a great
opportunity to access proven genetics that have been selected for
increased productivity and profitability. Sheep can be found to
improve lambing and weaning rates along with growth rates, and
increase carcass cutability. There will truly be a sheep for
everyone.

We hope you can benefit from the educational buyers
workshop preceding the sale, which will also be a great
networking opportunity. Interest in NSIP and sheep selected for
productivity improvement has never been higher. This is your
chance to see what the buzz is about and take home genetics
chosen for one purpose: improving your bottom line.

Thanks to everyone who helped make this sale materialize
and being a part of "America's Genetic Foundation for a Profitable
Sheep Industry"!

Sincerely,
Rusty Burgett
NSIP Program Director

51 Polypay Rams
25 Polypay Ewes
42 Suffolk Rams
12 Suffolk Ewes
25 Hampshire Rams
8 Hampshire Ewes
8 Dorset Rams
4 Katahdin Rams
2 Southdown Rams
2 Shropshire Rams
2 Rambouillet Rams
2 Texel Rams



NSIP Sale Consignors

Polypay Division	Lot #'s
Hidden Valley Polypays.....	1-2
Henke Family Polypays.....	3-4
CAK Polypays.....	5-10
Neaton Polypays.....	11-12
JCC Polypays.....	13-14
Allen Farms.....	15
Patriot Polypays.....	16-18
Schauer Sheep Company.....	19-20
Hausser Polypays.....	21-25
Shady Lane Farm.....	26-27
Follow One Farms.....	28-31
Refshaw Ranch	32-38
Diamond K Sheep Co.....	39-38B
Freking Polypay Genetics.....	49-50
Big Prairie Polypays.....	51-57
Meinders Stock Farm.....	58-60C
University of Wisconsin-Madison.....	61-64
Dakota Krome POA & Polypay.....	65-66E
Rambouillet Division	
Benz Rambouillet.....	67-68
Dorset Division	
Meeuwse Farms, LLC.....	69-74
Virginia Tech.....	75-78
PR Performance Dorsets.....	79-80
Katahdin Division	
Meinders Stock Farm.....	81-82
Tiki Farms	83-84
Suffolk Division	
Cannon River Suffolks	85-86
JMG Suffolks	87-89
Bunker Hill Farm.....	90-91
Russell Sheep Co.....	92-99
Meerdink Suffolks.....	100-103
Moonshadow Farm.....	104-105

NSIP Sale Consignors

Suffolk Division (Cont'd)	Lot #'s
Mint Gold Ranch.....	106-111B
Dry Sandy Sheep Co.....	112-119
Reau Suffolks.....	120-124
Culham & Stevens.....	125-132
R&R Suffolks.....	133-134
Texel Division	
West Virginia University.....	135-136
Hampshire Division	
University of Wisconsin-Madison.....	137-138
Helming Hampshires.....	139-144
Roembke Hampshires.....	145-148
Hayden's Hamps.....	149-153
Iowa State University.....	154-158
South Dakota State University.....	159-166
Drewry Farms.....	167-169
Shropshire Division	
Mapleton Mynd Shropshires.....	170-171
Southdown Division	
Hannah Taylor Southdowns.....	172-173
Siremax Division	
Siremax.....	174-175

NSIP Searchable Database available for more Information.

The new online searchable NSIP database is available at www.nsipsearch.nsip.org . You can type in any 16-digit NSIP ID number in this catalog into the search field on the database site to find more details on any animal.

This unique tool was developed with funding from American Sheep Industry's Let's Grow Program.

Estimated Breeding Values

Estimated breeding values (EBVs) quantify the genetic merit of a sheep for a particular trait. They express the expected deviation of performance of an animal for each trait. Each EBV consists of an age category and a measurement type. In the following example, if the ram has an EBV of 3.0 kg for weaning weight (WWT) he has the genetic potential to be 3 kg heavier at weaning compared to others in the breed

and his lambs should be 3.0 pounds heavier at weaning when we convert to pounds and since each lamb inherits half it's genetics from its sire.



EBVs available:

Birth Weight (BWT) estimates direct genetic effect on weight at birth. Positive selection on BWT EBVs is anticipated to increase birth weight and have correlated positive effects on early lamb survival especially in twins and triplets. Negative pressure is expected to decrease birth weights and lambing difficulty if oversized lambs are a common problem.

Maternal Weaning Weight (MWWT) estimates genetic merit for mothering ability and mainly reflects differences in ewe milk production. Selecting for high MWWT is expected to increase milk production and overall mothering ability of ewes which will reflect in increased pounds of lamb weaned.

Weaning Weight (WWT) provides an estimate of preweaning growth potential and will receive positive selection pressure in most flocks due to it's impact on pounds of lamb weaned per ewe exposed and overall profitability.

Post Weaning Weight (PWWT) reflects the genetic potential for lambs to grow after weaning based on both pre and post weaning data. Selecting for PWWT will favor individuals with rapid growth to market weight.

Number of Lambs Born (NLB) expresses the genetic potential for prolificacy and is reported in a percentage (%). If a ram has 26% NLB EBV, he should sire daughters that will have 26% more lambs than the average or if he sires 100 daughters, they will drop 26 more lambs compared to average.

Number of Lambs Weaned (NLW) evaluates combined effects of prolificacy and lamb survival and is also expressed as a percentage. If a ram with NLW EBV of 12% sires 100 daughters, those daughters will wean 12 additional lambs compared to average.

USA Maternal Index combines NLB, NLW, MWWT and WWT into one, easy to use number. Positive selection will increase multiple maternal traits at one time.

Post Weaning Eye Muscle Depth (PEMD) estimates the genetic potential for muscling. Positive selection pressure will increase carcass cutability and are estimated based on Ultrasound measurements.

Post Weaning Fat (PFAT) expresses the genetic potential for carcass fatness over the loin at the 12th and 13th ribs. Used in conjunction with PEMD, carcass composition and quality can be improved.

Carcass Plus (Carc+) combines WWT, PWWT, PEMD and PFAT into one, easy to use selection index. Positive selection pressure will increase growth rates and muscling while decreasing carcass fat.

Weaning and Post Weaning Fecal Egg Count (W/ PFEC) shows the genetic potential to resist internal parasites and is expressed as a percentage of reduction. *Negative* pressure will increase genetic resistance to parasites.



Thank you to the **American Polypay Sheep Association**
for sponsoring the Friday night consignors
dinner.

DVAuction
Broadcasting Real-Time Auctions

Can't make it to the sale? View and bid online at <https://www.dvauction.com/events/82211>.
Make sure to register to bid before the sale begins.



Hidden Valley Polypays

Glen & Chris Jones
4750 N 450 E
Rochester, IN 46975
574-204-3442
Glenjones1948@gmail.com

**Lot
1-2**

1

HV 817

NSIP ID # 620068-2018-HV8017

Born: 2/6/18 **Polypay** Ram

JCC 16625

HV 7012

HV 437

HV 2911

HV 3116

HV2909

EBVs						
WWT	MWWT	PWWT	NLB	NLW	US Mat	MAT\$
2.8	1.5	6.6	9.6	19.1	113	143

Excellent Combination of Maternal & Growth!

2

HV 8124

NSIP ID # 620068-2018-HV8124

Born: 3/12/18 **Polypay** Ram

WH PA 0210

JCC 16 625

JCC 21317

UW 15322

HV 6037

HV 3446

EBVs						
WWT	MWWT	PWWT	NLB	NLW	US Mat	MAT\$
2.3	2.05	4.9	14.8	23.4	116	144

Well balanced for Maternal Traits!

Polypay Division



Henke Family Polypays

Henke Family
27545 Hwy Y
Princeton, MO 64673
660-748-5742
henkefarms@gmail.com

**Lot
3-4**

3

H8005B

NSIP ID # 620098-2018-H8005B

Born: 1/18/18 **Polypay** Ram

620007-2013-130343

H5103B

620082-2012-WP0281

620098-2014-H14022

H5096T

620098-2012-HF1218

EBVs						
WWT	MWWT	PWWT	NLB	NLW	US Mat	MAT\$
2.4	1.5	6.1	21	22	113.6	142.4

Born and raised twin out of a solid T-line ewe whose lambs always have a good look and grow well. PPG is keeping the twin to this ram as our replacement B-line and he will be in use this fall. This ram should produce offspring that will be hard to find holes in.

4

H8078B

NSIP ID # 620098-2018-H8078B

Born: 1/31/18 **Polypay** Ram

620007-2013-130343

H5103B

620082-2012-WP0281

620098-2013-HF1321

H14072

620098-2012-HF1215

EBVs						
WWT	MWWT	PWWT	NLB	NLW	US Mat	MAT\$
3.1	1.5	8.6	29	26	115.4	153.9

Born and raised a triplet. Strong growth and maternal bred into this ram. Dam has a US Mat index of 119, maternal granddam has a 118.4 and just weaned 199 lbs of lamb as a 6 year old ewe. Maternal granddam has rams working in two NSIP flocks and PPG will put a ram into our program this fall. This ram could get your flock connected in NSIP in a hurry!



CAK Polypays

Chris & Anna Kaeb
639N 1000 E Road
Buckley, IL 60918
815-482-0381
cakfarm@gmail.com

**Lot
5-10**

5

K8038Z

NSIP ID # 620095-2018-K8038Z

Born: 2/14/18 **Polypay** Ram

UW 15437

UW 17414

UW P10192

DB Farms D5021R

CAK K6007R

CAK K3009A

EBVs					
WWT	MWWT	PWWT	NLB	NLW	US Mat
2.7	2.05	5.5	12.1	23.4	116

Twin raised as a twin, RR. This is a February born ram lamb out of the new University of Wisconsin Ram I purchased last summer. The dam is one of my heaviest milking ewes. This ram has a balanced set of EBVs well above average in all traits.

What is the National Sheep Improvement Program?
NSIP is a non-profit organization of sheep producers and animal scientists that started in 1986 to develop a tool to improve productivity of U.S. sheep industry. The program analyzes production records and converts them into an easy-to-use decision making tool that estimates the genetic potential of an animal. NSIP is run by a volunteer board of producers and industry professionals including geneticists, animal scientists and a program director. Estimated Breeding Values can be calculated for any breed that wishes to participate.

Polypay Division

6

K8025Y

NSIP ID # 620095-2018-K8025Y

Born: 2/2/18 **Polypay** Ram

Henke Farms H14074

Elm Creek E7005Y

Elm Creek E4025G

Lambshire L0024B

CAK K3057B

CAK K2047R

EBVs					
WWT	MWWT	PWWT	NLB	NLW	US Mat
2.6	1.9	5.6	9.0	17.2	113.2

Twin raised as a twin, RR. This is a nice thick February born ram that will be ready to breed this fall. He is sired by the new Elm Creek ram I purchased last summer. His dam is one of my older, most consistent ewes. She raises twins every year. Very balanced EBVs.

7

K8007Y

NSIP ID # 620095-2018-K8007Y

Born: 1/29/18 **Polypay** Ewe

Henke Farms H14074

Elm Creek E7005Y

Elm Creek E4025G

Elm Creek E3067D

CAK K4052D

CAK K3009A

EBVs					
WWT	MWWT	PWWT	NLB	NLW	US Mat
3.1	1.68	7.4	12.0	19.3	113.6

Twin raised as a twin, QR. Out of one of my best ewes. Great balance of growth and maternal traits.

8 K8015Y Polypay Division

NSIP ID # 620095-2018-K8015Y

Born: 1/30/18 Polypay Ewe

Henke Farms H14074

Elm Creek E7005Y

Elm Creek E4025G

Elm Creek E2024A

CAK K3009A

DB Farms 1046

EBVs					
WWT	MWWT	PWWT	NLB	NLW	US Mat
3.3	1.7	7.6	16.4	22.2	114.8

Twin raised as a twin, QR. Balanced EBVs. Granddam is the best ewe I ever had!

9 K8020Z

NSIP ID # 620095-2018-K8020Z

Born: 1/30/18 Polypay Ewe

UW 15437

UW 17414

UW P10192

Elm Creek E3067D

CAK K4033D

CAK K2047R

EBVs					
WWT	MWWT	PWWT	NLB	NLW	US Mat
2.4	1.65	5.1	6.4	21.9	114.4

Triplet raised as a triplet, QR. Comes from a strong ewe line.

10 K8034Z

NSIP ID # 620095-2018-K8034Z

Born: 2/11/18 Polypay Ewe

UW 15437

UW 17414

UW P10192

Lambshire L4088F

CAK K6036F

CAK K3010A

EBVs					
WWT	MWWT	PWWT	NLB	NLW	US Mat
3.2	1.47	6.9	20.0	26.4	115.8

Twin raised as a twin, QR. Very nice looking ewe with UW and Lambshire breeding in the background. Her numbers speak for themselves.



Neaton Polypays

Holly Neaton

11549 Hwy 25 SW

Watertown, MN 55388

952-240-2192

hjneaton@gmail.com

Lot
11-12

11 Neaton 18032

NSIP ID # 620020-2018-018032

Born: 3/31/18 Polypay Ram

UW P10190

Grandview 509

Grandview 1274

Elm Creek E0038X

Neaton 1245

Neaton 1082

EBVs						
WWT	MWWT	PWWT	NLB	NLW	US Mat	MAT\$
2.5	0.8	5.4	10	19	110.9	137.1

Lamb from a high health flock monitored for CLA, OPP and Johnes. Dam bred for October 2018 lambing. Scrapie genotyping, OPP serology and registration pending.

12 Neaton 18066

NSIP ID # 620020-2018-018066

Born: 4/4/18 Polypay Ram

UW P10190

Grandview 509

Grandview 1274

Elm Creek E0038X

Neaton 2095

Neaton 316

EBVs						
WWT	MWWT	PWWT	NLB	NLW	US Mat	MAT\$
2.5	0.8	5.4	10	19	110.9	137.1

Lamb from a high health flock monitored for CLA, OPP and Johnes. Dam bred for October 2018 lambing. Scrapie genotyping, OPP serology and registration pending.

Polypay Division



JCC Polypays

John & Colleen Carlson
13525 N 1050th Road
Macomb, IL 61455
309-333-9798
jccarlson@logonix.net

**Lot
13-14**

13 JCC 810

NSIP ID # 620007-2018-180810

Born: 1/3/2018 **Polypay** Ram

JCC 140437

JCC 160617

JCC 120223

620075 2012 E2041B

JCC 130307

JCC 110130

EBVs						
WWT	MWWT	PWWT	NLB	NLW	US Mat	MAT\$
2.6	2.5	5.4	14	28	118.9	148.3

This ram has a strong maternal background but with a large frame for heavier market weights. Born and raised a triplet, his milk and index EBVs are in the top 1% of the breed. His strong performance pedigree should provide consistent performance in his offspring.



14 JCC 848

NSIP ID # 620007-2018-180848

Born: 1/24/2018 **Polypay** Ram

Uncompahgre 5199

Uncompahgre 6148

Uncompahgre R306

JCC 140437

JCC 150550

JCC 140405

EBVs						
WWT	MWWT	PWWT	NLB	NLW	US Mat	MAT\$
2.1	2.0	4.4	19	27	116.8	143.0

A full brother to this ram was 2nd high selling Polypay at last year's CNS. This ram has solid EBVs across the board- no weak spots, plus he has the rump thickness not found in a lot of maternal rams. With a maternal index in the top 5%, milk and NLW in the top 10%, plus muscle, you can't go wrong!





Allen Farms

Robert Allen
W11456 McDonald Road
Merrimae, WI 53561
608-745-4603
aggienbob@yahoo.com

**Lot
15**

15 ALL 086

NSIP ID # 620119-2017-ALL086

Born: 4/5/2017

Polypay Yearling Ram

Lambshire L3108H

CAK 5050H

CAK K4007D

UW 10 397

Allen 20

UW 11 359

EBVs					
WWT	MWWT	PWWT	NLB	NLW	US Mat
2.1	1.4	4.6	15	17	*

Maternal Traits in NSIP

For most sheep producers, profit is determined by pounds of lamb sold per ewe exposed. Therefore, selection of maternal genetics should be based on maximizing this value. Number of Lambs Born(NLB) and Number of Lambs Weaned(NLW) indicate the prolificacy of female progeny and lamb survivability. Maternal Weaning Weight (MWWT) indicates the dam's contribution to weaning weight or milk production and mothering ability. Selecting for US Maternal Index and/or Maternal\$ Index will increase both the number of lambs born and growth rates of lambs, thus improving pounds of lamb weaned per ewe!

Polypay Division



**Lot
16-18**

Patriot Polypays

Chris Fagerness
428 100th Ave
Steen, MN 56173
507-855-2112
cfagerness@hotmail.com

16 P7062

NSIP ID # 620125-2017-P7062G

Born: 3/28/17

Polypay Yearling Ram

6200252015W5023G

6200982016H6020G

6200982012HF1215

6200072015150508

6201252016161625

6200252014W4032B

EBVs					
WWT	MWWT	PWWT	NLB	NLW	US Mat
3.25	2.21	7.32	33	22	115.71

Polypay Division

17 P8062

NSIP ID # 620125-2018-P8062C

Born: 3/4/18

Polypay

Ram

6200212015155199

6200612016166193

620061201313R327

6200072015150508

6201252017P7042S

6200252015W5029G

EBVs					
WWT	MWWT	PWWT	NLB	NLW	US Mat
3.78	2.03	8.19	25	26	117.24

18 P8092

NSIP ID # 620125-2018-P8092G

Born: 3/9/18

Polypay

Ram

6200252015W5023G

6200982016H6020G

6200982012HF1215

6200072015150508

6201252016161665

6200252015W5036U

EBVs					
WWT	MWWT	PWWT	NLB	NLW	US Mat
3.6	2.37	8.18	29	21	116.23



Schauer Sheep Company

Christopher Schauer

104 HWY 12W

Hettinger, ND 58639

701-567-3582

chris.schauer@yahoo.com

**Lot
19-20**

19 Schauer Sheep 1708

NSIP ID # 620102-2017-SS1708

Born: 2/7/17

Polypay

Yearling Ram

6200622013L3123W

6200952015K5004W

6200782012P12363

6201022013SS1330

6201022012SS1200

EBVs						
WWT	MWWT	PWWT	NLB	NLW	PFEC	US Mat
1.7	1.38	2.9	10.5	17.6	-5.7	111.4

RR Yearling buck with solid numbers that is ready to go to work.

20 Schauer Sheep 18006

NSIP ID # 620102-2018-SS8006

Born: 3/21/18

Polypay

Ram

6200612016166148

6200072017170743

6200072015150550

6200952015K5004W

6201022016SS1617

6201022014SS1404

EBVs						
WWT	MWWT	PWWT	NLB	NLW	PFEC	US Mat
2.4	*	4.8	18.3	25.1	*	115.3

RR buck lamb that is structurally sound. Sire is JCC 743, the highest indexing RR buck sold at last year's Center of the Nation Sale.



Hausser Polypays

Don & Mary Hausser
S67 W38381 Hwy ZZ
Eagle, WI 53119
262-495-2692

d.mhausser@gmail.com

Lot
21-25

21 Hausser 17035 TRP

NSIP ID # 620096-2017-H17035

Born: 2/7/17 **Polypay** Yearling Ram

JCC 40438

Hausser 16045

Hausser 12034
Lambshire L0145X

Hausser 12020

Henke 0025

EBVs						
WWT	MWWT	PWWT	NLB	NLW	US Mat	SRC\$
2.9	1.79	6.3	19	24.5	115.7	129.5

Born triplet, raised triplet, RR

Polypay Division

22 Hausser 18020

NSIP ID # 620096-2018-H18020

Born: 2/4/18 **Polypay** Ram

JCC 40438

Hausser 16045

Hausser 12034
Lambshire L0145X

Hausser 13005

Hausser 09059

EBVs						
WWT	MWWT	PWWT	NLB	NLW	US Mat	PFAT
3.6	1.34	8.6	18.4	26.4	115.7	-2.8

Born a twin, raised a twin, QR

23 Hausser 18032

NSIP ID # 620096-2018-H18032

Born: 2/5/18 **Polypay** Ram

JCC 40438

Hausser 16045

Hausser 12034
Lambshire L0145X

Hausser 13045

U of WI 09453

EBVs						
WWT	MWWT	PWWT	NLB	NLW	US Mat	PFAT
2.3	1.67	5.5	18.2	27.9	116.4	-1.7

Born twin, raised twin, RR

Polypay Division

24

Hausser 18003

NSIP ID # 620096-2018-H18003

Born: 1/27/18

Polypay

Ewe

JCC 40438

Hausser 16045

Hausser 12034

UW P13352

Hausser 14031

Hausser 11028

EBVs					
WWT	MWWT	PWWT	NLB	NLW	US Mat
2.0	1.44	4.8	25.2	31.1	116.7

Born twin, raised twin, RR

25

Hausser 18005

NSIP ID # 620096-2018-H18005

Born: 1/28/18

Polypay

Ewe

JCC 40438

Hausser 16045

Hausser 12034

Uncomp 5130

Hausser 16086

Hausser 15023

EBVs					
WWT	MWWT	PWWT	NLB	NLW	US Mat
1.9	1.34	3.5	23.2	25.8	114.3

Born twin, raised single, RR



Hausser 16045, Sire of Lots 21-25. #3 Elite Proven Sire with a US MAT index of 120.7, MWWT=1.65, PWWT = 7.8, NLB = 28.5 and NLW = 38.1



Shady Lane Farms

Nicole Jessen & Mark Giese
17146 377th Ave
Redfield, SD 57469
605-460-1932
ljessen87@gmail.com

**Lot
26-27**

26 Shady Lane NJ8001

NSIP ID # 620131-2018-008001

Born: 1/11/18 **Polypay** Ram

Hidden Valley 3585

Knutson F619

Freking F258N
UW 14383

Shady Land 5194

Shady Lane 5050

EBVs

WWT	MWWT	PWWT	NLB	NLW	US Mat	Mat \$
1.4	1.39	3.3	10.2	9.5	106.5	121.8

Twin, RR, registration R22136, Stout, thick made ram lamb.

Polypay Division

NJ 8001 – Lot 26



27 Shady Lane NJ1734

NSIP ID # 620131-2017-000034

Born: 10/2/17 **Polypay** Fall Ram

GVW 9037 "Grand Slam"

U of WI 16-326

U of WI 12-516

U of WI 14-383

Shady Lane NJ5193

Shady Lane 5032

EBVs

WWT	MWWT	PWWT	NLB	NLW	US Mat	Mat \$
1.3	1.33	*	3.8	1.9	104.8	112.3

Twin, RR, registration R22134, A deep bodied, structurally correct fall ram. His dam is a 2 year old that has lambed 3 times.



Follow One Farms

Caroline Scheffert
41253 State Highway 13
Waseca, MN 56093
507-461-6088

followonefarms@gmail.com

**Lot
28-31**

28 Follow One 0001

NSIP ID # 620143-2017-000001

Born: 2/14/17 **Polypay** Yearling Ram

Notkwyta Ranch 11217

Neaton 4573

Neaton 2107
U of WI 14-450

U of WI 16-392

U of WI 12-417

EBVs						
WWT	MWWT	PWWT	NLB	NLW	US Mat	Mat \$
1.5	1.3	3.1	5	11	108.5	126.4

01 is my 1st lamb out of a nice ewe lamb from U of WI. Born as a single but 2nd lambing she had triplets and raised all 3 on her own. 01 was used fall 2017 in a small flock and had 100% covered with many triplets.

29 Follow One 0007

NSIP ID # 620143-2018-000007

Born: 3/5/18 **Polypay** Ram

Big Prairie 208

Big Prairie 536

U of WI 12-424
U of WI 14-450

U of WI 13-329

U of WI 13-455

EBVs						
WWT	MWWT	PWWT	NLB	NLW	US Mat	Mat \$
0.7	*	0.5	9	14	107.1	117.96

Really nice young lamb out of a set of triplets. Brother to lot 30. 2nd favorite lamb with lots of potential. Triplet sister is being retained in-flock.

Polypay Division

30 Follow One 0008

NSIP ID # 620143-2018-000008

Born: 3/5/18 **Polypay** Ram

Big Prairie 208

Big Prairie 536

U of WI 12-424
U of WI 14-450

U of WI 13-329

U of WI 13-455

EBVs						
WWT	MWWT	PWWT	NLB	NLW	US Mat	Mat \$
0.4		-0.1	9	14	106.9	116.1

Again, another nice lamb. Littermate to lot 29. Both did well as triplets and their dam took care of all 3. Keeping the sister in the flock. Still has lots of potential ahead of him.

31 Follow One 0010

NSIP ID # 620143-2018-000010

Born: 3/7/18 **Polypay** Ram

Big Prairie 208

Big Prairie 536

U of WI 12-424
Henke HF 5062

U of WI 16-528

U of WI 11-366

EBVs						
WWT	MWWT	PWWT	NLB	NLW	US Mat	Mat \$
0.1		0.7	9	12	105.6	115.8

Real nice little ram here. Keeping his brother to see where he tops out. This ewe really gave me 3 nice lambs to choose from!

Polypay Division



Refshaw Ranch

Jeremy & Renita Refshaw
1339 290th Street
Waubun, MN 56589
218-230-5383

refshawranch@yahoo.com

**Lot
32-38**

32 RP 7003

NSIP ID # 620090-2017-RP7003

Born: 2/9/17 **Polypay** Yearling Ram

Woodhill PA0210

JCC 150543

JCC 130347

Tr/Tr

Elm Creek E0006X

Refshaw Ranch RP 4124

RPZ 025

EBVs					
WWT	MWWT	PWWT	NLB	NLW	US Mat
2.3	1.9	5.8	22.9	26.8	116.51

RR. Balanced EBVs, full brother sold for \$1,750 at 2017 NSIP Sale in Spencer. Top 6% for US Maternal Index.

33 RP 7029

NSIP ID # 620090-2017-RP7029

Born: 2/15/17 **Polypay** Yearling Ram

U of WI P10190

U of WI 15-398

U of WI P 13-357

Qd/Qd

Refshaw Ranch W769

Refshaw Ranch RPB130

Refshaw Ranch 755

EBVs						
WWT	MWWT	PWWT	NLB	NLW	PFEC	US Mat
2.1	0.7	4.6	22.2	37.1	-41.6	117.59

RR, Negative FEC in the top 10%. NLW of 37.1 is the top of the breed and US Maternal index is top 3%. Dam has raised quads twice with no assistance. Full brother is at work in our own flock.

34 RP 7062

NSIP ID # 620090-2017-RP7062

Born: 2/20/17 **Polypay** Yearling Ram

U of WI P10190

U of WI 15-398

U of WI P 13-357

Tw/Tw

Elm Creek 10006X Senor Dos

Refshaw Ranch RPZ 124

RPB 033

EBVs						
WWT	MWWT	PWWT	NLB	NLW	PFEC	US Mat
3.6	1.1	9.0	12.5	24.2	-3.9	114.41

RR, PWWT is top 1% and WWT is top 3% of the breed with an index in the top 20%.

35 RP 8028

NSIP ID # 620090-2017-RP7003

Born: 2/6/18 **Polypay** Ram

Woodhill PA0210

JCC 150543

JCC 130347

Tw/Tw

CAK K2024R

Refshaw Ranch RP 5013

RPB 130

EBVs					
WWT	MWWT	PWWT	NLB	NLW	US Mat
2.2	1.3	6.0	14.8	24.9	114.59

RR, Index in top 20% with balanced EBVs.

36 RP 8032

NSIP ID # 620090-2018-RP8032

Born: 2/6/18 **Polypay** Ram

JCC 150543

Refshaw Ranch RP 7008

RPZ8 04

Tw/Tw

U of WI 15 398

Refshaw Ranch RP 6073

RPA 115

EBVs						
WWT	MWWT	PWWT	NLB	NLW	PFEC	US Mat
2.5	1.1	6.2	21.7	30.4	-18.5	116.23

RR, Negative PWEC top 15%, NLW top3% and index top 10%.

Polypay Division

RP 7062
Lot 34



RP 7003
Lot 32



RP 7029
Lot 33



Polypay Division

37 RP 8012

NSIP ID # 620090-2018-RP8012

Born: 2/4/18

Polypay

Ewe

Woodhill PA 0210

JCC 150543

JCC 130347

CAK K2024R

Tw/Tw

Refshaw Ranch RP 4061

RPA 087

EBVs						
WWT	MWWT	PWWT	NLB	NLW	PFEC	US Mat
2.4	1.7	6.2	8	14.7	15.8	111.65

QR, PA0210 granddaughter is in the top 50% of the breed.

38 RP 8088

NSIP ID # 620090-2018-RP8088

Born: 2/16/18

Polypay

Ewe

Woodhill PA 0210

JCC 150543

JCC 130347

CAK K2024R

Tw/Tw

Refshaw Ranch RP 5054

Refshaw Ranch 607

EBVs						
WWT	MWWT	PWWT	NLB	NLW	PFEC	US Mat
2.9	1.5	4.5	9.7	16.3	26	111.47

QR, PA0210 granddaughter is in the top 50% of the breed.



Diamond K Sheep Co.

Brandon & Michelle Knutson

8605 Kemmerer Road

Clinton, WI 53525

608-732-4955

dksheepco@yahoo.com

**Lot
39-48B**

39 F610

NSIP ID # 620128-2016-004610

Born: 12/2/16

Polypay

Fall Yearling Ram

HV 3418

Hidden Valley HV3585

HV 3222

Henke HF1136

Freking 265N

Elm Creek E2005M

EBVs					
WWT	MWWT	PWWT	NLB	NLW	US Mat
2.76	0.7	7.72	3	7	106.27

F610 is a big boned ram with huge capacity. I used him on some ewe lambs last fall and really liked the lambs. Sire of ram 847 in the sale. Single, RR

40 F611

NSIP ID # 620128-2016-004611

Born: 12/3/16

Polypay

Fall Yearling Ram

HV 3418

Hidden Valley HV3585

HV 3222

Henke HF1136

Freking 239B

Freking 120035

EBVs					
WWT	MWWT	PWWT	NLB	NLW	US Mat
2.55	0.1	7.19	9.2	12.8	106.59

F611 is correctly made and very thick. His dam 239B is one of our best ewes. Her lifetime yearly lamb percentage is 265% over 4 years, breeds for falls and consistently produces the top lambs in the group. I have kept too many daughters to keep using F611. Triplet RR

Polypay Division

41 **1780**

NSIP ID # 620128-2017-001780

Born: 11/4/17

Polypay

Fall Ram

HV 3585

Diamond K F611

Freking 239B

Refshaw 4141

U of WI 16-441

U of WI 13-354

EBVs					
WWT	MWWT	PWWT	NLB	NLW	US Mat
2.68	0.85	7.0	2.5	13.1	109.03

Triplet, 1780 is a fall lamb and one of the first out of ram F611 (lot 40 in this sale). His dam was my top pick from the 2016 UW production sale. She lambd the following March with a single and bred right after weaning to have triplets in November. 1780 has been called Dollar since he was let out of the jug because using him as a ram will make you some \$.

42 **847**

NSIP ID # 620128-2018-000847

Born: 2/22/2018

Polypay

Ram

HV 3585

Diamond K F610

Freking 265N

HF 5062

U of WI 17-337

U of WI 15-320

EBVs					
WWT	MWWT	PWWT	NLB	NLW	US Mat
3.24	1.77	8.5	19.3	22.1	114.85

We normally don't bring young rams to the CNS but this one is too good to leave home. Dam was my top pick out of the 2017 UW Production sale. She raised triplets at 14 months and did a fine job if it. Triplet.

43 **1740**

NSIP ID # 620128-2017-001740

Born: 9/1/17

Polypay

Fall Ram

HV 3418

Hidden Valley HV3585

HV 3222

Henke HF1136

Freking 239B

Freking 120035

EBVs					
WWT	MWWT	PWWT	NLB	NLW	US Mat
2.24	0.09	6.65	9.2	12.9	106.45

Natural Fall Born twin, 1740 is genetically the same ram as F611 (lot 40 in this sale) and he shows it. He is wide and thick made. A ram to put in the pasture along the road as well as his lambs!

44 **1749**

NSIP ID # 620128-2017-001749

Born: 9/4/17

Polypay

Fall Ram

HV 3418

Hidden Valley HV3585

HV 3222

Henke HF1136

Freking 258N

Freking 1112S

EBVs					
WWT	MWWT	PWWT	NLB	NLW	US Mat
1.92	0.23	5.21	12.2	15	107.38

Big framed, thick natural fall born ram. Dam (258N) had twins in December and bred to have this single the following September. Full brother sold in the Wyoming state ram sale last fall.

**45
A****1783 Pen of 2 Ewes**

NSIP ID # 620128-2017-001783

Born: 11/11/17 **Polypay** Fall Ewes

HV 3585

Diamond K F611

Freking 239B

E 2039B

Freking 226B

Freking 120039

EBVs					
WWT	MWWT	PWWT	NLB	NLW	US Mat
1.63	0.712	4.64	1.6	3.4	104.15

This pair of natural born fall twin sisters will not disappoint any buyer and they are ready to breed today. Their dam is another of our Freking ewes that always produces some top lambs and breeds year round. Their sire, (F611) doesn't need to be introduced and sells as lot 40 as a yearling ram.

**45
B****1784 Pen of 2 Ewes**

NSIP ID # 620128-2017-001784

Born: 11/11/17 **Polypay** Fall Ewes

HV 3585

Diamond K F611

Freking 239B

E 2039B

Freking 226B

Freking 120039

EBVs					
WWT	MWWT	PWWT	NLB	NLW	US Mat
1.63	0.712	4.64	1.6	3.4	104.15

Polypay Division**46
A****822 Pen of 2 Ewes**

NSIP ID # 620128-2018-000822

Born: 1/25/18 **Polypay** Ewes

HV 3585

Diamond K F611

Freking 239B

HF 1136

Freking 198N

E 2101S

EBVs					
WWT	MWWT	PWWT	NLB	NLW	US Mat
2.25	0.31	6.58	8.9	7	104.65

We keep a lot of fall ewe lambs as replacements allowing us to bring some of our top winter lambs to the CNS. I still kept 1/3 of this set of triplet ewe lambs. 822 and 833 are stout, thick made ewe lambs, backed by some powerful genetics. 198N is a heavy milking ewe with a 225 lambing percentage over 4 years.

**46
B****823 Pen of 2 Ewes**

NSIP ID # 620128-2018-000823

Born: 1/25/18 **Polypay** Ewes

HV 3585

Diamond K F611

Freking 239B

HF 1136

Freking 198N

E 2101S

EBVs					
WWT	MWWT	PWWT	NLB	NLW	US Mat
2.11	0.31	6.49	8.9	7	104.57

Polypay Division

47
A

835 Pen of 2 Ewes

NSIP ID # 620128-2018-000835

Born: 1/30/18 **Polypay** Ewes

HV 3585

Diamond K F611

Freking 239B

Diamond K 5304

Diamond K 1616

Freking 198N

EBVs					
WWT	MWWT	PWWT	NLB	NLW	US Mat
2.27	0.38	5.95	9.8	10.5	106.26

Triplet. Dam is one of the top ewes retained out of our 2016 winter lambs. She adds size and volume to her lambs.

47
B

830 Pen of 2 Ewes

NSIP ID # 620128-2018-000830

Born: 1/30/18 **Polypay** Ewes

HV 3585

Diamond K F611

Freking 239B

IA 2888

IA 444

IA 68907

EBVs					
WWT	MWWT	PWWT	NLB	NLW	US Mat
2.31	0.2	5.67	9.6	10.7	104.81

Twin, Dam was my top pick from Irish Acres flock in 2016. She is moderate framed and a heavy milker.

48
A

815 Pen of 2 Ewes

NSIP ID # 620128-2018-000815

Born: 1/21/18 **Polypay** Ewes

HV 3585

Diamond K F611

Freking 239B

HV 3585

Diamond K F620

Freking 238N

EBVs					
WWT	MWWT	PWWT	NLB	NLW	US Mat
2.47	0.1	7.06	4.5	9.1	105.14

Single raised by a yearling ewe.

48
B

825 Pen of 2 Ewes

NSIP ID # 620128-2018-000825

Born: 1/26/18 **Polypay** Ewes

HV 3585

Diamond K F611

Freking 239B

HV 3585

Diamond K F613

Diamond K 5235

EBVs					
WWT	MWWT	PWWT	NLB	NLW	US Mat
2.17	6.16	6.16	7.4	11.7	105.46

Twin raised by a yearling ewe. 815 and 825 are out of a group of ewe lambs I linebred to F611. They are big framed, thick ewe lambs backed by some of the top growth genetics in the breed.



Freking Polypay Genetics

Bryce & Bobbi Freking
924 35th Street
Ceylon, MN 56121

605-310-0733

frekingpolypay@gmail.com

Lot
49-50

49 804DY

NSIP ID # 620107-2018-F0804D

Born: 1/19/18

Polypay

Ram

620105-2017-K7006D

620107-2016-F0578Y

EBVs					
WWT	MWWT	PWWT	NLB	NLW	US Mat
3.4	2.2	7.7	21	20	115.4

This ram is a very well put together and meaty ram. He has all the traits to be a huge game changer for any flock. With a MWWT, WWT, PWWT all in the top 5% of the breed and a NLB in the top 20% of the breed.

Polypay Division

50 835DY

NSIP ID # 620107-2018-F0835D

Born: 1/22/18

Polypay

Ram

620105-2017-K7006D

620107-2016-F0512Y

EBVs					
WWT	MWWT	PWWT	NLB	NLW	US Mat
3.2	1.8	7.1	25	23	114.9

This ram is a very well put together and meaty ram as well. He also has all the traits to be a huge game changer for any flock. With a MWWT, WWT, PWWT and NLB in the top 15% and NLW in the top 20%, they don't come much more balanced in every trait!



Big Prairie Polypays

Mark Meurer & Family
1869 Midway Road
Ashton, IL 61006

815-973-5576
meurer66@gmail.com

Lot
51-57

51 Big Prairie 658

NSIP ID # 620112-2018-00C658

Born: 2/15/18 **Polypay** Ram

Big Prairie 235

U of WI 14-450

U of WI 10-192

Grandview GVW 9037

Grandview GV2133

Grandview GV 6607

EBVs

WWT	MWWT	PWWT	NLB	NLW	US Mat
EBVs available Sale Day					

Phenotypically correct ram lamb with maternal pedigree and lots of growth. Adjusted 90 day weight of 130 pounds. A triplet ram lamb with performance and structural correctness. NSIP Data will be available.

Polypay Division

52 Big Prairie 670

NSIP ID # 620112-2018-00C670

Born: 2/24/18 **Polypay** Ram

Big Prairie 235

U of WI 14-450

U of WI 10-192

Grandview GVW 9037K

Grandview GV3101

Grandview GV 5590K

EBVs

WWT	MWWT	PWWT	NLB	NLW	US Mat
EBVs available Sale Day					

A structurally correct, athletic ram lamb with maternal power and growth. Adjusted 90 day weight of 110 pounds. NSIP Data will be available on sale day.

53 Big Prairie 627

NSIP ID # 620112-2018-00C627

Born: 1/24/18 **Polypay** Ram

Big Prairie 235

U of WI 14-450

U of WI 10-192

Pharo 14-426

Lambshire L6188K

Lambshire L3098X

EBVs

WWT	MWWT	PWWT	NLB	NLW	US Mat
EBVs available Sale Day					

Thick rugged ram lamb with dimension. Nice maternal pedigree with growth rate. Adjusted 90 day weight of 119 pounds.

Polypay Division

54 Big Prairie 606

NSIP ID # 620112-2017-00C606

Born: 10/21/17 **Polypay** Fall Ewe

Big Prairie 235

U of WI 14-450

U of WI 10-192

Grandview GVW 8009

Grandview GV375K

Grandview GV120K

EBVs					
WWT	MWWT	PWWT	NLB	NLW	US Mat
2.7	1.0	5.3	5	15	110.2

If you're looking for foundation ewes, Big Prairie 606 & 607 are the answer. Volume, dimension, structural correctness and maternal. Adjusted 90 day weight of 116 pounds. A naturally-conceived fall ewe lamb with brood ewe written all over her.

55 Big Prairie 607

NSIP ID # 620112-2017-00C607

Born: 10/21/17 **Polypay** Fall Ewe

Big Prairie 235

U of WI 14-450

U of WI 10-192

Grandview GVW 8009

Grandview GV375K

Grandview GV120K

EBVs					
WWT	MWWT	PWWT	NLB	NLW	US Mat
2.5	1.0	5.1	5	15	110.1

Big Prairie 607 is a bookend to Big Prairie 606. Thick, rugged, brood ewe prospect with growth. Adjusted 90 day weight of 108 pounds. Another naturally-conceived fall ewe lamb.

56 Big Prairie 625

NSIP ID # 620112-2017-00C625

Born: 1/7/18 **Polypay** Ewe

U of WI 14-305

JCC 1514

JCC 21307

Shady Lawn 735

Big Prairie 206

Big Prairie 0021

EBVs					
WWT	MWWT	PWWT	NLB	NLW	US Mat
0.3	*	0.5	-5	4	104.4

A really correctly designed ewe lamb with dimension and volume. Big Prairie 625 goes back to some of our original genetics with little NSIP relationship. Growthy ewe lamb that had an adjusted 90 day weight of 99 pounds.

57 Big Prairie 628

NSIP ID # 620112-2017-00C628

Born: 1/24/18 **Polypay** Ewe

Big Prairie 235

U of WI 14-450

U of WI 10-192

Pharo 14426

Lambshire L6188K

Lambshire L3098X

EBVs					
WWT	MWWT	PWWT	NLB	NLW	US Mat
1.8	1.5	3.9	5	11	109.3

Rugged ewe lamb with dimension and structural correctness. Excellent maternal pedigree with growth rate. Adjusted 90 day weight of 116.5 pounds.



Meinders Stock Farm

Zach & Jake Meinders
42645 20th Ave.
Buffalo Center, IA 50424

515-320-3835
meinders2@hotmail.com

**Lot
58-60C**

58 MSF 8083

NSIP ID # 620121-2018-008083

Born: 2/25/18 **Polypay** Ram

JCC 343

JCC 437

JCC 318

U of WI 16-353

U of WI 17-443

U of WI 16-479

EBVs					
WWT	MWWT	PWWT	NLB	NLW	US Mat
3.7	2.2	8.3	22	34	120.8

Late February RR Triplet out of a great ewe lamb. Top 4% MWWT,
Top 3% PWWT&NLW and top 1% USA Maternal!

Polypay Division

59 MSF 8051

NSIP ID # 620121-2018-008051

Born: 1/26/18 **Polypay** Ram

U of WI 10-190

U of WI 15-319

U of WI 10-416

K3047A

H15016

H12020

EBVs					
WWT	MWWT	PWWT	NLB	NLW	US Mat
3.3	1.6	7.3	20	24	115

RR Twin. Very stout, growthy January ram lamb. Top 10% PWWT,
top 15% NLW & USA Maternal.

**MSF 8051
Lot 59**



Polypay Division

60 MSF 8004 Pen of 3 Rams

NSIP ID # 620121-2018-008004

A

Born: 1/6/18 Polypay Ram

JCC 343

JCC 437

JCC 318

U of WI 15-310

U of WI 16-440

U of WI 15-340

EBVs					
WWT	MWWT	PWWT	NLB	NLW	US Mat
2.1	1.2	4.9	20	29	115.2

Pen Ram, RR Twin. Balanced EBVs with a top 15% USA Maternal index.

60 MSF 8015 Pen of 3 Rams

NSIP ID # 620121-2018-008015

B

Born: 1/13/18 Polypay Ram

U of WI 10-190

U of WI 15-319

U of WI 10-416

Uncompahgre 5199

Uncompahgre 6173

Uncompahgre R321

EBVs					
WWT	MWWT	PWWT	NLB	NLW	US Mat
2.8	1.2	5.8	30	28	114.9

Pen Ram, RR Twin. Balanced EBVs with a top 15% USA Maternal Index, Top 5% NLB and is a full sib to 8014 (lot 60C).

60 MSF 8014 Pen of 3 Rams

NSIP ID # 620121-2018-008014

C

Born: 1/13/18 Polypay Ram

U of WI 10-190

U of WI 15-319

U of WI 10-416

Uncompahgre 5199

Uncompahgre 6173

Uncompahgre R321

EBVs					
WWT	MWWT	PWWT	NLB	NLW	US Mat
2.4	1.2	4.6	30	28	114.6

Pen Ram, RR Twin. Balanced EBVs with a top 15% USA Maternal Index, Top 5% NLB and is a full sib to 8015 (lot 60B).





University of Wisconsin-Madison Sheep Program

Todd Taylor
W4857 Meek Road
Arlington, WI 53911
608-332-4914
toddtaylor@wisc.edu

**Lot
61-64**

61 U of WI 15-437 RR

NSIP ID # 620078-2015-015437

Born: 3/17/15

Polypay Elite Mature
Ram

Uncompahgre B254

Notkwyta Ranch 1246

NR 1209

U of WI 10-190

U of WI P14-307

U of WI 11-416

EBVs								
WWT	MWWT	PWWT	NLB	NLW	WFEC	PFEC	US Mat	MAT\$
3.0	2.69	6.5	5.3	21.5	-37.5	-49.9	117.4	139.4

Here's your chance to own a true Stud!! I may regret selling him! He's one of a kind and one of the best bucks of any breed I have put together here at UW!! He already has over 150 offspring in NSIP. 16 daughters lambd in our flock this year. Have 20 ewe lambs from this year's crop to go through and he has been running with 30 ewes for fall lambing. I am planning to keep one son, one grandson and a maternal half-brother to use this fall. Sold 11 sons out of him last year. Used one ourselves that will be entered in Wooster. Sons are being used by Grandview, Pharo, Anderson and CAK Polypays just to name a few. It's time to get him out into other environments!

Polypay Division

62 U of WI 17-369 RR

NSIP ID # 620078-2017-017369

Born: 2/14/17

Polypay Yearling Ram

HF 1321

Henke Farms H5062Y

HF 1351

Elm Creek 2050B

U of WI P13-455

U of WI 9350

EBVs							
WWT	MWWT	PWWT	NLB	NLW	WFEC	US Mat	MAT\$
2.03	2.83	3.81	22	23.5	63.5	117.43	139.34

Every now and then you get lucky. I purchased Henke 5062Y in Spencer as a lamb because his PWWT and YWT EVBs were huge!! His first substantial set of daughters hit production this spring and low and behold, his MWWT number has gone through the roof (3.37) and his USA Maternal went to 119.3!! Here is a yearling son that has a great set of numbers and is actually bigger than his sire!! I promise 5062 will get more ewes this fall!

Polypay Division

63

U of WI 17-521 RR

NSIP ID # 620078-2017-017521

Born: 10/8/17

Polypay

Fall Ram

Henke Farms HF 1321

Henke Farms F5062Y

Henke Farms HF 1351

U of WI 9425

U of WI P12-330

U of WI P10-351

EBVs								
WWT	MWWT	PWWT	NLB	NLW	WFEC	PFEC	US Mat	MAT\$
2.94	2.11	7.1	26.6	24.9	*	*	116.46	150.14

If you need fall lambing potential, here's your ram. Another son of the Henke ram!! Very thick ram with tons of rib shape. Dam is an older ewe that goes back to the U of Kentucky ram we bought back in 2007!!

64

U of WI 18-340 RR

NSIP ID # 620078-2018-018340

Born: 1/22/18

Polypay

Ram

NR 1246

U of WI 15-437

U of WI 1307

Big Prairie235

U of WI 15-364

U of WI 12-500

EBVs								
WWT	MWWT	PWWT	NLB	NLW	WFEC	PFEC	US Mat	MAT\$
2.44	1.65	5.30	8.6	21.6	-38.5	-50.1	114.25	144.6

Wanted to bring example of the phenotype that comes from 15437. Here is a little different maternal line, dam is out of Big Prairie 235 and also carries another shot of 10190 a generation further back. He is one of the biggest and fastest growing ram lambs we have this year. Parasite resistance is a bonus!!

Polypay Division

Dakota Krome POA & Polypay

Dan and Lori Krome
2116 150th Street
Fairmont, MN 56031
507-236-3174
lkrome@frontiernet.net



**Lot
65-66E**

65 K 8009Y

NSIP ID # 620105-2018-K8009Y

Born: 2/5/18 **Polypay** Ram

WP 0255

Henke HF1321

000531

Elm Creek E3061X

Dakota Krome K6014X

Dakota Krome Ko405K

EBVs					
WWT	MWWT	PWWT	NLB	NLW	US Mat
3.2	1.7	7.6	34	27	116.2

This young ram has the proven genetics to provide multiple births of triplets to quintuplets through his maternal line and his sire line has provided the genes for tremendous rate of growth and weight gain with PWWT EBV 7.6. You won't go wrong with this young sire.

This matched group of 5 ewe lambs is offered for your consideration. Their US Maternal Indexes range from 115.5 to 116.3—but even better yet- when you see these ewes in person, they will amaze you with their size and uniformity. All 5 are sired by the Elm creek 7022K ram and each of their dams are prolific ½ sisters—all daughters of our #1 ram in the nation WA1041 who currently has a maternal index of 122.05 as of 5/31/18.

66 A K 8003K

NSIP ID # 620105-2018-K8003K

Born: 2/2/18 **Polypay** Ewe Lamb

Freking F0545K

Elm Creek 7022K

Elm Creek E4012G

Woodhill WA 1041

Dakota Krome K0351T

Dakota Krome K02225B

EBVs					
WWT	MWWT	PWWT	NLB	NLW	US Mat
2.5	2.4	5.1	34	23	115.8

8003 K and 8004 K are triplet sisters with birth weights of 12.2, 11.0 (ram 10.3). They have very balanced EBVs with good birth weights, excellent milk numbers and weaning weights as well as impressive post weaning weights of 5.1. These 2 have tremendous number of lambs born/weaned. Their dam is a tremendous producer and has lambed triplets in February as well as triplets in October. Their dam remains in production in our flock. They are granddaughters of our #1 ram in the nation (index 122.05).

Polypay Division

66 B K 8004K

NSIP ID # 620105-2018-K8004K

Born: 2/2/18 **Polypay** Ewe Lamb

Freking F0545K

Elm Creek 7022K

Elm Creek E4012G

Woodhill WA 1041

Dakota Krome K0351T

Dakota Krome K02225B

EBVs					
WWT	MWWT	PWWT	NLB	NLW	US Mat
2.5	2.4	5.1	34	23	115.8

8003 K and 8004 K are triplet sisters with birth weights of 12.2, 11.0 (ram 10.3). They have very balanced EBVs with good birth weights, excellent milk numbers and weaning weights as well as impressive post weaning weights of 5.1. These 2 have tremendous number of lambs born/weaned. Their dam is a tremendous producer and has lambed triplets in February as well as triplets in October. Their dam remains in production in our flock. They are granddaughters of our #1 ram in the nation (index 122.05).

66 C K 8015K

NSIP ID # 620105-2018-K8015K

Born: 2/6/18 **Polypay** Ewe Lamb

Freking F0545K

Elm Creek 7022K

Elm Creek E4012G

Woodhill WA 1041

Dakota Krome K0355T

Dakota Krome K02221B

EBVs					
WWT	MWWT	PWWT	NLB	NLW	US Mat
2.0	2.3	4.1	30	25	116.3

This triplet ewe lamb had a birth weight of 11.5 pounds. She has very balanced EBVs as well as all of them being well above average. Her dam remains in production in our flock and has had out of season triplets in October and a tremendous production. She is a granddaughter of our #1ram (index 122.05).

66 D K 8029K

NSIP ID # 620105-2018-K8029K

Born: 2/11/18 **Polypay** Ewe Lamb

Freking F0545K

Elm Creek 7022K

Elm Creek E4012G

Woodhill WA 1041

Dakota Krome K7031T

Dakota Krome K5031X

EBVs					
WWT	MWWT	PWWT	NLB	NLW	US Mat
2.7	2.2	5.9	28	22	115.5

This twin ewe lamb is a product of a maiden ewe with birth weight of 9.5 pounds (twin ram 9.3lbs). This ewe lamb has had a tremendous rate of growth. It appears that she will follow her dam in being a great producer. She is a granddaughter of our #1ram in the nation (index 122.05).

66 E K 8053K

NSIP ID # 620105-2018-K8053K

Born: 2/19/18 **Polypay** Ewe Lamb

Freking F0545K

Elm Creek 7022K

Elm Creek E4012G

Woodhill WA 1041

Dakota Krome 7057T

Dakota Krome K5120X

EBVs					
WWT	MWWT	PWWT	NLB	NLW	US Mat
2.3	2.6	5.2	27	21	115.7

This twin ewe lamb is also from the first litter of a maiden ewe. Her birth weight was 9.0 lbs (ram was 11.01 lbs). This ewe lamb comes from a very prolific line and has the potential to be a great producer herself! She is the granddaughter of our #1 ram in the nation (index of 122.05).

Rambouillet Division



Benz Rambouillet

Matt & Amy Benz
24820 Oregon Trail Road
St. Marys, KS 66536

701-870-4135

benzmatt@hotmail.com

Lot
67-68

67 Benz 3106

NSIP ID # 612013-2017-BE3106

Born: 2/8/17 **Rambouillet** Yearling Ram

McNeil 467

Benz 2938

Benz 2556

Lehfeldt F89

EBVs						
WWT	MWWT	PWWT	NLB	NLW	YFD	US Range
-0.06	0.26	-0.08	1.6	1.3	-0.71	101

Polled, RR. 60 day wt = 70 pounds, 120 day wt = 120 pounds,
1/27/18 wt = 265 pounds.

68 Benz 3122

NSIP ID # 612013-2017-BE3122

Born: 10/7/17 **Rambouillet** Fall Ram

Benz 2938

Benz 2820

EBVs						
WWT	MWWT	PWWT	NLB	NLW	YFD	US Range
-0.3	0.7	-0.7	1	1	*	101

Polled, RR. 90 day wt = 103 pounds, 3/12/18 weight = 163 pounds



Meeuwse Farms, LLC

Dave & Nathan Meeuwse

3021 16th Street
Hopkins, MI 49328

269-760-1268

dmmeeuwse@gmail.com

**Lot
69-74**

69 Meeuwse 17138

NSIP ID # 696030-2017-177138

Born: 4/28/17

Dorset

Yearling Ram

K Bar K 111159 F-TW

Meeuwse 16122 S-TW

Meeuwse 1242 S-TW

Meeuwse 1281 S-TW

Meeuwse 16042 S-TW

Meeuwse 1377 S-TR

EBVs

WWT	MWWT	PWWT	NLB	NLW	Carcass +
4.6	0.4	9.8	-2	1	144.6

This QR April Yearling twin was exposed to 8 ewe lambs and sired 11 lambs. Two of his daughters (lots 72 and 73) sell in this sale

70 Meeuwse 17113

NSIP ID # 696030-2017-177113

Born: 2/25/17

Dorset

Yearling Ram

Huntrods 5887 F-SG

VA Tech V041 F-TR

VA Tech M009 F-TR

Meeuwse 14076 S-TW

Meeuwse 15053 S-TW

Meeuwse 14033 S-TW

EBVs

WWT	MWWT	PWWT	NLB	NLW	Carcass +
1.9	-0.1	5.4	3	6	136.8

This RR February twin yearling was exposed to 9 ewe lambs and sired 12 lambs. An april daughter sells as lot 71 in this sale.

Dorset Division

71

Meeuwse 8064

NSIP ID # 696030-2018-188064

Born: 4/19/18

Dorset

Ewe

VA Tech V041 F-TR

Meeuwse 17113 S-TW

Meeuwse 15053 S-TW

Meeuwse 15102 S-TW

Meeuwse 17010 S-QD

Meeuwse 1372 S-TR

EBVs

WWT	MWWT	PWWT	NLB	NLW	Carcass +
2.0	*	4.8	5	6	129.8

This April Twin ewe lamb was sired by Meeuwse 17113 who sells as lot 70 in this sale. She is out of a very prolific maternal line.

72

Meeuwse 8070

NSIP ID # 696030-2018-188070

Born: 4/28/18

Dorset

Ewe

Meeuwse 16122 S-TW

Meeuwse 17138 S-TW

Meeuwse 16042 S-TW

VA Tech V041 F-TR

Meeuwse 17034 S-TW

Meeuwse 15036 S-TW

EBVs

WWT	MWWT	PWWT	NLB	NLW	Carcass +
3.3	*	7.1	-1	-1	*

This April Twin ewe lamb was sired by Meeuwse 17138 who sells as lot 69 in this sale.

Dorset Division

73**Meeuwse 8059**

NSIP ID # 696030-2018-188059

Born: 4/15/18

Dorset

Ewe

Meeuwse 16122 S-TW

Meeuwse 17138 S-TW

Meeuwse 16042 S-TW

VA Tech V041 F-TR

Meeuwse 17037 S-TR

Meeuwse 1055 S-TR

EBVs

WWT	MWWT	PWWT	NLB	NLW	Carcass +
w.1	*	5.8	1	2	131.7

This April Twin ewe lamb was sired by Meeuwse 17138 who sells as lot 69 in this sale.

74**Meeuwse 17060**

NSIP ID # 696030-2017-177060

Born: 3/16/2017

Dorset

Ewe

Huntrods 5887 F-SG

VA Tech V041 F-TR

VA Tech M009 F-TR

Meeuwse 1281 S-TW

Meeuwse 15020 S-TW

Meeuwse 1362 S-TW

EBVs

WWT	MWWT	PWWT	NLB	NLW	Carcass +
2.0	1.0	4.9	1	3	135.2

This Virginia Tech V041 daughter sells exposed for fall lambing to Meeuwse 16122. Ultrasound results available sale day.



Virginia Tech

Dr. Scott Greiner

Dept. of Animal & Poultry Science,
366 Litton Reaves Hall

Blacksburg, VA 24061

540-231-9159

sgreiner@vt.edu

**Lot
75-78**

75 VA Tech X005

NSIP ID # 696022-2017-00X005

Born: 10/26/17

Dorset

Fall Ram

Huntrods 5535

Huntrods 5887

Huntrods 5368

Heisdorffer 3083

VA Tech V043

VA Tech J074

EBVs								
WWT	MWWT	PWWT	PEMD	PFAT	PFEC	NLB	NLW	Carc+
2.1	0.1	4.1	0.2	-3.6	-25	-0.5	2.4	136

X005 provides one of the last opportunities to acquire a direct son of the legendary Huntrods 5887 ram (now deceased)-the most proven ram in the Dorset breed. 5887, along with his progeny and grand progeny, dominate the elite sire lists. Phenotypically this ram is a standout-correct, muscular, big bodied and attractive. His EBV profile is solid across the board. We debated long and hard about keeping this one and instead settled on one of his brothers. A true stud ram here. QR



**VA Tech X005
Lot 75**

**VA Tech X007
Lot 76**



Dorset Division

77 VA Tech X022

NSIP ID # 696022-2017-00X022

Born: 11/13/17

Dorset

Fall Ram

Huntrods 5887

VA Tech P026

VA Tech J025

K Bar K 099154

VA Tech N009

VA Tech G070

EBVs								
WWT	MWWT	PWWT	PEMD	PFAT	PFEC	NLB	NLW	Carc+
3.3	0.9	7.0	-0.1	-2.4	-29	-6	-0.2	141

X022 is a tremendous growth ram, posting EBVs in the top 1% of breed for WWT and PWWT. He combines some very proven genetics, being sired by "Pete" VA Tech P026 and his dam by the K Bar K 99154 ram. The 99154 females have been very productive for us and the proof on P026 speaks for itself. RR



VA Tech X022
Lot 77

78 VA Tech W097

NSIP ID # 696022-2017-00W097

Born: 2/7/17

Dorset

Ram

Huntrods 5887

VA Tech P026

VA Tech J025

VA Tech S036

VA Tech V022

VA Tech G001

EBVs								
WWT	MWWT	PWWT	PEMD	PFAT	PFEC	NLB	NLW	Carc+
2.2	0.4	5.1	0.7	-3.3	27	-5.4	-1	145

This yearling also concentrates our Huntrods 5887 lines. The maternal grandsire, S036, is a son of 5887. W097 also ranks among the highest in the breed for Carcass+ with very strong growth and carcass EBVs. RR



Dorset Division



PR Performance Dorsets

Curt Stanley
7050 156th Ave. NW
Bismarck, ND 58503

701-333-8009
curtssheep@gmail.com

**Lot
79-80**

79 PRPD 1761

NSIP ID # 696021-2017-001761

Born: 9/14/17 **Dorset** Fall Ram

PRFD 250

PRPD 1636

MSU 207

RSO 2029

PRPD 1606

PRFD 1020

EBVs					
WWT	PWWT	PEMD	PFAT	Carcass+	SRC\$
1.0	1.9	0.2	-0.8	115	104.6

This is our first edition of fall lambs and are sired by a home raised ram out of a MSU ewe purchased in this sale. This is our fourth year in NSIP and the EBVs are starting to get some accuracy. The granddam of this ram has been a standout for us.

80 PRPD 1765

NSIP ID # 696021-2017-001765

Born: 9/16/17 **Dorset** Fall Ram

PRFD 250

PRPD 1636

MSU 207

Deckert 1001

Deckert 314

Deckert 886

EBVs					
WWT	PWWT	PEMD	PFAT	Carcass+	SRC\$
1.2	2.4	*	*	117.9	104.4

The dam of this ram has lambed 3 times in 15 months and I have kept every ewe lamb she has produced. This ram should produce great daughters.



Meinders Stock Farm

Zach & Jake Meinders
42645 20th Ave.
Buffalo Center, IA 50424
515-320-3835
meinders2@hotmail.com

**Lot
81-82**

81 MSF 8057

NSIP ID # 640150-2018-008057

Born: 1/28/18 **Katahdin** Ram

NWT 337

CMG 16-103

CMG 043

CMG 15-067

EBVs					
WWT	MWWT	PWWT	NLB	NLW	US HAIR
2.1	0.6	4.3	12	19	109.3

RR Twin. Very attractive and thick made red ram lamb. Balanced EBVs with great growth.



MSF 8057
Lot 81

Katahdin Division

82 MSF 8049

NSIP ID # 640150-2018-008049

Born: 1/26/18 **Katahdin** Ram

NWT 337

CMG 16-103

CMG 043

CMG 15-010

EBVs					
WWT	MWWT	PWWT	NLB	NLW	US HAIR
1.7	0.8	3.2	12	20	109.8

QR Twin. Attractive white ram lamb. Balanced EBVs with high NLW.



MSF 8049
Lot 82

Katahdin Division



TIKI Farms

Bill Stofferan
1249 Nest Avenue
Sibley, IA 51249

712-461-0271

jasasse@mtcnet.net

**Lot
83-84**

83 TIK 503

NSIP ID # 640119-2018-TIK503

Born: 2/26/18 **Katahdin** Ram

DOC 571

TIK 231

TIK 044

ADS 105

DOC 650

EBVs					
WWT	MWWT	PWWT	NLB	NLW	US HAIR
-0.1	0.8	1.9	-1.4	1.6	100.7

February ram lamb, twin RR. Registered Katahdin with KHSI. He is a muscular ram with several keeper qualities. He is a nicely developing ram and will be ready to go this fall. See our website www.tikifarms.net to learn more about our quality stock and operation. B.Ovis negative & nice clean hair coat.

84 TIK 361

NSIP ID # 640119-2017-TIK361

Born: 11/21/17

Katahdin

Fall Ram

WVF 330

FAH 254

FAH 164

DOC 571

TIK 073

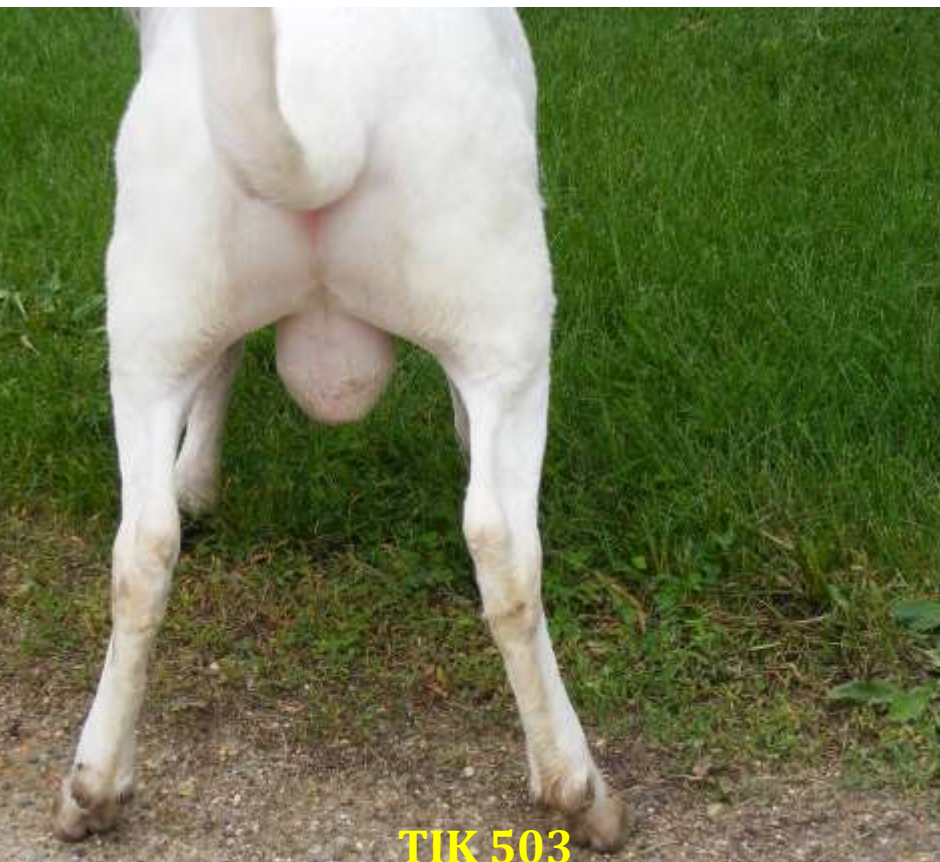
TIK 050

EBVs					
WWT	MWWT	PWWT	NLB	NLW	US HAIR
0.1	1.3	3.0	-2.0	6.5	103.1

B.Ovis negative, nice clean hair coat. November 2017 born ram. Twin, RR. Registered with the KHSI. This ram is coming out of our keeper pen. He is muscular, stout, with a moderate frame. He comes from our FAH ram and carries some color with him. He also has PFEC of -32 for parasite resistance! See our website www.tikifarms.net to learn more about our stock and our operation.

Katahdin Hair Sheep: A Breed Whose Time has Come!
Katahdin Sheep work in a variety of production systems as a low maintenance, easy care sheep. Dr. David Notter of Virginia Tech, a leading sheep geneticist in the U.S. stated the future success of the sheep industry will depend on a highly productive sheep that is prolific with good mothering ability, low maintenance, exhibits parasite resistance and one that either requires no shearing or produces the highest quality fiber.

Katahdin sheep from NSIP flocks have been selected using EBVs for all of these traits to produce a highly prolific flock that requires less inputs, less deworming and will work in a variety of production systems throughout the U.S.



TIK 503
Lot 83



TIK 361
Lot 84





Cannon River Suffolks

John Scott
41438 185th Street
Kilkenney, MN 56052

612-963-4629

attorneyjscott@yahoo.com

**Lot
85-86**

85 Cannon River 1718

NSIP ID # 690122-2017-001718

Born: 3/27/17

Suffolk

Yearling Ram

MSU 4154

Cannon River 1654 RR

EBVs					
BWT	WWT	PWWT	PEMD	PFAT	Carcass+
-0.11	1.8	4.5	0.7	-1.1	132.6

Suffolk Division

86 Cannon River 1735

NSIP ID # 690122-2017-001735

Born: 3/25/17

Suffolk

Yearling Ram

MSU 2124

ATA Suffolks 77

EBVs					
BWT	WWT	PWWT	PEMD	PFAT	Carcass+
0.34	4.8	9.1	-0.7	-1.4	141.1



Cannon River Suffolks 1735, Lot 86

Suffolk Division



JMG Suffolks

Jeremy & Heidi Geske
31307 171st Ave
New Prague, MN 56071

612-756-1200

jeremy.geske@gmail.com

**Lot
87-89**

87 JMG 1820 RR

NSIP ID # 690042-2018-1820RR

Born: 1/30/18 **Suffolk** Ram

MSU 2124

Leonidas JMG1715RR

JMG 1339RR

Dombek Family 2469 RR

Pearson 5-49

Pearson 4-09

EBVs					
BWT	WWT	PWWT	PEMD	PFAT	Carcass+
0.5	3.4	5.5	-1.8	-1.1	125.8

A big boned, growthy grandson of MSU 2124. His Adj60dWt = 105, Adj90dWt = 159, ADG – 1.8 lbs per day (a new record for my farm).

88 JMG 1817 RR

NSIP ID # 690042-2018-1817RR

Born: 1/25/18 **Suffolk** Ram

MSU 2124

Leonidas JMG1715RR

JMG 1339RR

MSU 0152

JMG 1514RR

JMG 1122RR

EBVs					
BWT	WWT	PWWT	PEMD	PFAT	Carcass+
0.41	2.6	4.3	-1.2	-0.6	118.8

Born & Raised a triplet! Pedigree includes MSU 2124 and MSU 152. Adj60dWt = 93.2, Adj90dWt = 131.6. ADG – 1.28 lbs per day

89 JMG 1836 RR

NSIP ID # 690042-2018-1836RR

Born: 2/21/18 **Suffolk** Ewe

MSU 1109

MSU 2124

MSU 9138

Quam 11058 RR/NN

JMG 1308RR

JMG 1035 RR

EBVs					
BWT	WWT	PWWT	PEMD	PFAT	Carcass+
0.25	2.9	5.0	-0.9	-0.2	126.1

We haven't offered many daughters of MSU 2124 for sale as we have been hoarding them for ourselves! This one has a twin sister we will be keeping.

JMG 1820RR
Lot 87

Suffolk Division

JMG 1817RR
Lot 88



Suffolk Division



Bunker Hill Farm

William and Susan Shultz

3378 CR21

DeGraff, OH 43318

937-935-2702

bunkerhillfarm@gmail.com

**Lot
90-91**

90 Bunker Hill

NSIP ID # 690007-2018-Pending

Born: Pending

Suffolk

Ram

Suffolk Ram Lamb

EBVs					
BWT	WWT	PWWT	PEMD	PFAT	Carcass+
EBVs Available Sale Day					

Because of our late scanning and post weaning dates, we will not make any entry decisions until after the 1st of July. Please email us if you would like additional information on our entries.

91 Bunker Hill

NSIP ID # 690007-2018-Pending

Born: Pending

Suffolk

Ram

Suffolk Ram Lamb

EBVs					
BWT	WWT	PWWT	PEMD	PFAT	Carcass+
EBVs Available Sale Day					

Benefits of Cross Breeding with a Terminal Sire
 It's often said, "there's no such thing as a free lunch"...especially in agriculture. However, simply using crossbreeding with terminal sires in your commercial production system truly is a "free lunch" in the sheep industry by increasing pounds of lamb marketed, carcass quality and profitability. Simply crossbreeding 2 pure breeds can increase conception rate and litter size by almost 3%, lamb survival by 9.8% and pounds of lamb weaned per ewe exposed by almost 18%. Utilizing a 3-breed cross can add an additional 8.7% to conception rate, 14.7% more lambs weaned and an extra 18% pounds weaned per ewe on top of the original increase in heterosis(Thomas, 2006)! Adding in the extra production due to selection with EBVs can make that "free lunch" even more appetizing!



Russell Sheep Co.

Jeremy Russell
3500E CR 700N
Eaton, IN 47338

765-749-3100

farmer1224@hughes.net

**Lot
92-99**

92 RSC 8503

NSIP ID # 690119-2018-188503

Born: 1/8/18 **Suffolk** Ram

JCJOW1 6150

RSC 6510

RSC 11109

Slack 0076

RSC 2012

RSC 10003

EBVs					
BWT	WWT	PWWT	PEMD	PFAT	Carcass+
-0.02	0.6	2	-0.2	-0.6	108.4

RSC 8503 is a big, bold, fast growing Suffolk ram lamb. His pedigree includes excellent production history. His dam was 1st place slick shorn ewe as both a lamb and yearling at the Indiana State Fair.



**RSC 8503
Lot 92**

Suffolk Division

93 RSC 8523

NSIP ID # 690119-2018-188523

Born: 1/16/18 **Suffolk** Ram

Slack H8432

RSC 14019

RSC 10019

Slack 3172

RSC 4042

RSC 18362%

EBVs					
BWT	WWT	PWWT	PEMD	PFAT	Carcass+
-0.11	-0.5	-1	1.2	0.3	96.6

RSC 8523 is a carcass ram loaded with thickness front to back, top to bottom. This ram will be a 68% pure Suffolk. He is a percentage pedigree with power.

94 RSC 8549

NSIP ID # 690119-2018-188549

Born: 1/24/18 **Suffolk** Ram

RSC15061

RSC 7589

RSC 5070

RSC 13029%

RSC 4025%

RSC 11067%

EBVs					
BWT	WWT	PWWT	PEMD	PFAT	Carcass+
-0.06	0.8	3	0.4	-1.7	123.2

RSC8549 combines growth and thickness to make him an eye-appealing, production type ram. He does have some crossbreeding in his pedigree and will be a 78% registered Suffolk.

Suffolk Division

RSC 8523
Lot 93



RSC 8549
Lot 94



Suffolk Division

95

RSC 8551

NSIP ID # 690119-2018-188551

Born: 1/24/18

Suffolk

Ram

Slack H8432

RSC 14019

RSC 10009

Slack 9460 "Slick Slack"

RSC 3071

RSC 2028

EBVs					
BWT	WWT	PWWT	PEMD	PFAT	Carcass+
0..9	1	3.7	0.1	-2.3	125.5

It's hard to put this one in the sale because we really wanted to keep him. He is a full brother to RCS 15061, one of the best rams we've raised. This is the right combo of genotype and phenotype.

96

RSC 8552

NSIP ID # 690119-2018-188552

Born: 1/24/18

Suffolk

Ram

Slack 3270

Slack 4342

Slack A0055

RSC 14019

RSC 6040

RSC 3009

EBVs					
BWT	WWT	PWWT	PEMD	PFAT	Carcass+
0.31	1.5	3.1	0.3	-2.3	126.5

8552 is a fast growing, long and extended ram lamb with heavy bone and plenty of muscle.

97

RSC 8564

NSIP ID # 690119-2018-188564

Born: 1/26/18

Suffolk

Ram

RSC 10049

RSC 15094 "Top Gun"

RennVue JR 5056

Slack 2132

RSC 4021

RSC 11074

EBVs					
BWT	WWT	PWWT	PEMD	PFAT	Carcass+

8564 has good extension and should pass on an excellent rate of gain.



Suffolk Division



Suffolk Division

98

RSC 8524

NSIP ID # 690119-2018-188524

Born: 1/16/18

Suffolk

Ram

RSC15061

RSC 7589

RSC 5070

Slack 0076

RSC 2013

P Russell & Fam IN1010 120

EBVs					
BWT	WWT	PWWT	PEMD	PFAT	Carcass+
-0.04	0.8	3	0.4	-1.7	123.5

This ram is as level and thick as you can make a Suffolk ram. He is wide from the ground up.



RSC 8524
Lot 98

99

RSC 7606

NSIP ID # 690119-2017-177606

Born: 2017

Suffolk

Yearling Ram

RSC 14019

RSC 15061

RSC 3071

RSC 10049

RSC 2015

Hofman W158

EBVs					
BWT	WWT	PWWT	PEMD	PFAT	Carcass+
Available Sale Day					

We used this young yearling on a group of replacement ewe lambs last year. His offspring are stylish and loaded with muscle. His dam was an outstanding show ewe.

Suffolk Division



Meerdink Suffolks

Kim Meerdink
4941 Cherry Ave.
Hawarden, IA 51023

712-552-1802

kdmeerdink@netllcwb.net

Lot
100-103

100

Meerdink 8232

NSIP ID # 690103-2018-188232

Born: 1/14/18 **Suffolk** Ram

RSC 6531

RSC 7504

RSC 2014
MGR 9035

Meerdink 123

Meerdink 802

EBVs

BWT	WWT	PWWT	PEMD	PFAT	Carcass+
-----	-----	------	------	------	----------

EBVs available soon

Twin born

101

Meerdink 8239

NSIP ID # 690103-2018-188239

Born: 1/29/18 **Suffolk** Ram

RSC 6531

RSC 7504

RSC 2014
MGR 3014

Meerdink 4172

Kimm 10215

EBVs

BWT	WWT	PWWT	PEMD	PFAT	Carcass+
-----	-----	------	------	------	----------

EBVs available soon

Triplet born

Suffolk Division

102

Meerdink 8238

NSIP ID # 690103-2018-188238

Born: 2018

Suffolk

Ewe

RSC 6531

RSC 7504

RSC 2014

MGR 9035

Meerdink 122

Meerdink 802

EBVs					
BWT	WWT	PWWT	PEMD	PFAT	Carcass+
EBVs available soon					

Twin born

103

Meerdink 8247

NSIP ID # 690103-2018-188247

Born: 2/15/18

Suffolk

Ewe

Kimm 12307

Meerdink 6194

Meerdink 113

Kimm 15025

Meerdink 6352

MGR 3066

EBVs					
BWT	WWT	PWWT	PEMD	PFAT	Carcass+
EBVs available soon					

Twin born



Moonshadow Farm

Michael & Debbie Jensen
33564 Hwy E34
Castana, IA 51010

712-353-6599

michaelj@wiatel.net

Lot
104-105

Suffolk Division

104

Moonshadow Farm 1805 RR

NSIP ID # 690047-2018-181805

Born: 2/4/18 **Suffolk** Ram

Bar Zel 5055

Kimm 17216

Kimm 12024

Kimm 04081-12090

Moonshadow Farm 1305

Kimm 9052-09058

EBVs

BWT	WWT	PWWT	PEMD	PFAT	Carcass+
0.05	1.3	2.3	Soon	Soon	soon

MSF 1805 is a twin ram lamb by Kimm 17216, a Bar-Zel 5055 son and dammed by Moonshadow Farm 1305. MSF 1305 is a paternal granddaughter of Kimm's powerful ewe, Kimm 04081. MSF 1805's sister is the thickest, fastest growing ewe lamb we have. 6-11-18 weight 135 pounds. Please check us out at www.MoonshadowFarmSheep.com

105

Moonshadow Farm 1811 RR

NSIP ID # 690047-2018-181811

Born: 2/6/18 **Suffolk** Ram

MacCauley 2551 "Mighty Moe"

MacCauley 3503

Kimm 12024

Kimm 04081-12090

Moonshadow Farm 1416

Moonshadow Farm 1104

EBVs

BWT	WWT	PWWT	PEMD	PFAT	Carcass+
0.04	0.3	2.2	Soon	Soon	soon

MSF 1811 is a MacCauley "Mighty Moe" grandson dammed by our Moonshadow Farm 1416. MSF 1416 is also a paternal granddaughter of Kimm 04081 and she has had elite, keeper lambs. 1416's dam, MSF 1104 has done the same great job for us. 6-11-18 wt 140 lbs. Please check us out at www.MoonshadowFarmSheep.com



Mint Gold Ranch

Dale and Judy Dobberpuhl
5807 County Road X
DePere, WI 54115

920-864-7732

mintgoldranch@gmail.com

Lot
106-111 B

106 MGR 8311

NSIP ID # 690035-2018-008311 Twin, RR

Born: 1/20/18 Suffolk Ram

MSU 4137

Reau 607

MSU 5113

MSU 9170

Mint Gold Ranch 4139

Kimm 10109

EBVs

BWT	WWT	PWWT	PEMD	PFAT	Carcass+
0.84	6.1	9.8	0.8	-4.1	174.5

8311 has great potential with not only some of the best of the MSU breeding on the sire's side but also from the dam. 4139 is in the top 7 proven ewes of the breed. She is sired by former Carcass+ trait leader. Also dam Kimm 10109 is the triplet to Bob Kimm's 10107 ewe who has at least 6 stud rams that Kimm and Mint Gold Ranch have used. We are keeping the twin ram lamb to 8311. 8311 has gained 1.14 lb/day since birth. Pictures and info at www.mintgoldranch.com.

Suffolk Division

107 MGR 8303

NSIP ID # 690035-2018-008303 Twin, RR

Born: 1/9/18 Suffolk Ram

MGR 4111

Mint Gold Ranch 6307

MGR 4139

Kimm 15025

Mint Gold Ranch 6376

MGR 5348

EBVs

BWT	WWT	PWWT	PEMD	PFAT	Carcass+
0.43	4.0	5.6	1.6	-2.5	157.7

A ram that is a true balance of muscle mass and growth. Sire 6307 is a ram with huge rear end. 4H'ers come and pick his wethers first. 6307's NSIP numbers keep climbing with each new report. We are keeping the twin ram lamb to 8303, he is more of the same. Sorry, the spots are clipper nicks in the photo. Don't forget to check www.mintgoldranch.com for udder scores (dam page) and other pictures.



Suffolk Division

108
A **MGR 8326 Pen of 2 ram lambs**
NSIP ID # 690035-2018-008326 Twin, RR

Born: 1/25/18 Suffolk Ram
MSU 4137

Reau 607

MSU 5113
MGR 5352

Mint Gold Ranch 6384

MGR 3005

EBVs					
BWT	WWT	PWWT	PEMD	PFAT	Carcass+
0.25	4.8	8.9	0.7	-2.3	160

This ram has an excellent balance of all EBVs. He will hold the thickness in his lambs as well as good growth. Keep in mind he is a late January twin.



108
B **MGR 8329 Pen of 2 ram lambs**
NSIP ID # 690035-2018-008329 Twin, RR

Born: 1/26/18 Suffolk Ram
MSU 4137

Reau 607

MSU 5113
MGR 5352

Mint Gold Ranch 6393

MGR 9023

EBVs					
BWT	WWT	PWWT	PEMD	PFAT	Carcass+
0.89	5.5	8.2	0.0	-3.2	154.9

This ram has great background in many flocks. MSU 4137 was used in both the Reau and Dry Sandy flocks. MGR 5352 was used at Mint Gold Ranch and John Scott flocks. A very strong ram base in this ram.



Suffolk Division



109 B MGR 8375 Pen of 2 Rams

NSIP ID # 690035-2018-008375 Twin, RR
Born: 2/12/18 Suffolk Ram
Kimm 12211

Kimm 15025

Kimm 11091
MSU 1109

MSU 2151

MSU 9116

EBVs					
BWT	WWT	PWWT	PEMD	PFAT	Carcass+
0.33	3.7	7.1	0.1	-2.1	143.7

Keep in mind 8375 is a February lamb but growing well. WE are keeping the twin ewe lamb who had a large loin eye scan for such a young lamb. 2151 was born in 2012 and going strong. She was purchased because of her PWWT of 11.7, a ewe in the top 2% for PWWT. Don't forget to check www.mintgoldranch.com for pictures.

109 A MGR 8321 Pen of 2 Rams

NSIP ID # 690035-2018-008321 Triplet, RR
Born: 1/25/18 Suffolk Ram
MGR 4111

Mint Gold Ranch 6307

MGR 4139
MSU 152

MSU 3140

MSU 1169

EBVs					
BWT	WWT	PWWT	PEMD	PFAT	Carcass+
0.81	4.5	5.8	0.1	-2.4	141.7

MSU 3140 was a show ewe for the university in 2013 and did well at the Michigan State Fair. MSU 152 has been used by several flocks with many Suffolks referenced to him. Also reference his triplet sister 8322 who is also in this sale. We are keeping the other sister. Pics at www.mintgoldranch.com.



Suffolk Division

110 A MGR 8302 Pen of 2 Ewes

NSIP ID # 690035-2018-008302 Twin, RR
Born: 1/4/18 Suffolk Ewe
MSU 4137

Reau 607

MSU 5113
Kimm 15025

Mint Gold Ranch 6321

MGR 3108

EBVs					
BWT	WWT	PWWT	PEMD	PFAT	Carcass+
-0.16	3.3	7.1	1.9	-2.1	163.3

This ewe has genetics in several flocks. MSU 4137 was used in both the Reau and Dry Sandy flocks. Kimm 15025 was purchased because he had the best dam with good NSIP numbers in his flock. We are keeping the twin ewe lamb to this entry.



110 B MGR 8322 Pen of 2 Ewes

NSIP ID # 690035-2018-008322 Twin, RR
Born: 1/25/18 Suffolk Ewe
MGR 4111

Mint Gold Ranch 6307

MGR 4139
MSU 152

MSU 3140

MSU 1169

EBVs					
BWT	WWT	PWWT	PEMD	PFAT	Carcass+
1.1	5.9	7.9	-0.3	-3.2	151.3

MSU 3140 was a show ewe for the university in 2013 and did well at the Michigan State Fair. MSU 152 has been used by several flocks with many Suffolks referenced to him. Also reference his triplet sister 8321 who is also in this sale. We are keeping the other sister.



Suffolk Division

111 B

MGR 8317 Pen of 2 Ewes

NSIP ID # 690035-2018-008317

Triplet, RR

Born: 1/22/18

Suffolk

Ewe

MSU 4137

Reau 607

MSU 5113

MGR 5352

Mint Gold Ranch 6382

MGR 4109

EBVs

BWT	WWT	PWWT	PEMD	PFAT	Carcass+
0.34	4.7	8.5	0.4	-2.2	154.2

Triplet sister to other ewe in this pen.



111 A

MGR 8316 Pen of 2 Ewes

NSIP ID # 690035-2018-008316

Triplet, RR

Born: 1/22/18

Suffolk

Ewe

MSU 4137

Reau 607

MSU 5113

MGR 5352

Mint Gold Ranch 6382

MGR 4109

EBVs

BWT	WWT	PWWT	PEMD	PFAT	Carcass+
0.53	5.1	8.9	0.2	-2.7	155.8

The two ewe lambs in this pen are triplets. I kept the two ewe lambs from 6382 last year and one of the triplets this year. I need to share her good performance with someone else. All of these ewe lambs have an excellent balance of growth and muscle.



Dry Sandy Sheep Co

Matt and Amy Beals
55865 19th Rd.
Alexandria, NE 68303

402-200-0444

drysandysheep@gmail.com

Lot
112-119

112

Dry Sandy E049

NSIP ID # 690109-2017-00E049

Twin

Born: 1/30/17

Suffolk

Yearling Ram

MSU 3173

Dry Sandy B55

EBVs					
BWT	WWT	PWWT	PEMD	PFAT	Carcass+
0.195	3.79	7.51	0.335	-1.86	146.49

This is a growthy, big volumed ram. A maternal brother to D66 was used here and produced well. His sire MSU 3173 currently is #7 on the elite proven list. His sire is now being used in the Virginia Tech Program.

Suffolk Division

113

Dry Sandy F 006

NSIP ID # 690109-2018-00F006

Twin

Born: 1/7/18

Suffolk

Ram

MSU 4137

Dry Sandy B63

EBVs					
BWT	WWT	PWWT	PEMD	PFAT	Carcass+
0.21	2.69	4.99	2.52	-3.79	167.88

What can we say about this guy. We must not like him since we are keeping his twin brother as a stud instead and this is the one with a higher carcass plus. Seriously though, we really like this guy, I can't use both and I go back and forth on which one is better. Top 1/3 of the breed for PWWT and well inside the top 10% for both PEMD and Carcass+. His sire, MSU 4137 needs no introduction, he sired the top selling ram at this sale 2 of the last 3 years for Reau Suffolks. I was contending bidder on the one 3 years ago. I didn't get him but I jumped at the chance to get his sire a few years later as a mature ram. Oh, did I mention 4137 is a $\frac{3}{4}$ brother (same mother) as MSU 3173, our former stud now at VA Tech? F006's mother is a 3.3 for PEMD and positive for growth. Here is a chance for a serious Suffolk breeder to get ahold of a genetically very well connected and balanced stud ram prospect.

Suffolk Division

114

Dry Sandy F 009

NSIP ID # 690109-2018-00F006

Single

Born: 1/8/18

Suffolk

Ram

MSU 4137

Full Deck 104

EBVs					
BWT	WWT	PWWT	PEMD	PFAT	Carcass+
0.5	3.16	5.96	0.53	-3.4	148.1

A very solid commercial ram again sired by MSU 4137.

115

Dry Sandy F 026

NSIP ID # 690109-2018-00F026

Single

Born: 1/21/18

Suffolk

Ram

MSU 4137

Dry Sandy C9

EBVs					
BWT	WWT	PWWT	PEMD	PFAT	Carcass+
0.43	3.52	6.7	-0.25	-2.18	137.69

Another MSU 4137, had the highest actual weight and post weaning weights for me this year. Dam is one of favorite young ewes.

116

Dry Sandy F 42

NSIP ID # 690109-2018-00F042

Single

Born: 1/24/18

Suffolk

Ram

MSU 4137

Dry Sandy B30

EBVs					
BWT	WWT	PWWT	PEMD	PFAT	Carcass+
0.52	3.95	9.03	-0.36	-3.95	152.79

This potential stud ram very nearly stayed home for our own use. His maternal brother is none other than Dry Sandy D69 who led off this sale in 2016. He sold that day to Full Deck Suffolks and is now the #2 ram on the elite carcass plus list at 183.7. This guy is only 152.8 but I see a lot of similarities in their growth patterns. This guy is also better in some areas that the numbers don't describe. Namely, bigger ribbed, bigger footed and more rugged in design. His dam is an outcross to virtually all of the breed's high growth sheep. We think this guy holds a lot of pieces needed for today's sheep industry. Buy with confidence. Yes he was only a single, however EBVs for number born and weaned are good. Mother usually has twins and was a triplet herself.

117

Dry Sandy F 007

NSIP ID # 690109-2018-00F007

Twin

Born: 1/8/18

Suffolk

Ewe

MSU 4137

Full Deck 98

EBVs					
BWT	WWT	PWWT	PEMD	PFAT	Carcass+
0.44	3.38	6.69	0.17	-2.97	145.3

Replacement quality ewe lamb by MSU 4137 and a daughter of MSU 3173. Line bred to the famed K164 ewe.

Suffolk Division

118**Dry Sandy F 022**

NSIP ID # 690109-2018-00F022

Single

Born: 1/21/18

Suffolk

Ewe

MSU 4137**Dry Sandy D43****EBVs**

BWT	WWT	PWWT	PEMD	PFAT	Carcass+
0.35	3.78	7.42	-0.79	-1.45	131.75

Nice MSU 4137 ewe, dam is sired by Kim 14050, a ram we leased from Bob Kimm for the 2015 season.

119**Dry Sandy F 027**

NSIP ID # 690109-2018-00F022

Single

Born: 1/21/18

Suffolk

Ewe

MSU 4137**Dry Sandy D22****EBVs**

BWT	WWT	PWWT	PEMD	PFAT	Carcass+
0.46	3.75	7.33	-0.44	-2.42	139.19

Do you see a pattern here? Another MSU 4137 ewe. Good ewe from the same ewe family as our lead ram lamb consignment and one of our two keeper rams. Dam sired by MSU 4132, ram we lost prematurely while in Virginia on a lease swap with VA Tech. $\frac{3}{4}$ sister to our other keeper ram this year.

Suffolk Division



Reau Suffolks

Mark and Brenda Reau
17315 Ida West Road
Petersburg, MI 49270

734-755-8285

brendareau@gmail.com

Lot
120-124

120

Reau 602

NSIP ID # 690030-2017-000602

Born: 1/21/17

Suffolk

Yearling Ram

Bunker Hill 2968

Bunker Hill 3124

Bunker Hill 2771

Reau 564

Reau 582

Reau 474

EBVs					
BWT	WWT	PWWT	PEMD	PFAT	Carcass+
0.02	2.4	4.4	1.4	-1.6	143.9

This is the heaviest muscled ram that we have ever produced. He is a big ram that is easy fleshing and heavy boned. He is in the top 30% of the breed for Carcass+. Sired by Bunker Hill "Butt Biter" who we selected from Bill's top ram lambs in the 2016 crop, 602 is a rugged package that is ready to go to work. RR at codon 171.



Suffolk Division

121

Reau 614

NSIP ID # 690030-2017-000614

Born: 2/13/17

Suffolk

Yearling Ram

MSU 3103

MSU 4137

Krehbiels K-364

Bunker Hill 3040

Bunker Hill 3132

Bunker Hill 2846

EBVs

BWT	WWT	PWWT	PEMD	PFAT	Carcass+
0.68	5.1	8.8	0.6	-4.0	165.8

This ram was our number one stud prospect last year and he has not disappointed us. He is the sire of 80% of our lamb crop. We are retaining the majority of his daughters, a couple top sons and have a number of his half-sisters. It makes sense to turn him loose to another flock that needs the genetics to take their flock to the next level. Sired by the great MSU 4137, an Elite sire that we used for three years and is now in the breeding program at Dry Sandy Sheep Company. 614 is a proven stud ram with outstanding EBVs. He is in the top 10% for Post Weaning Weight and the top 6% for Carcass +. This is the most powerful genetic package that we have ever offered at this sale. He is one of only seven yearling rams in the breed with a Carcass+ above 165 that is a proven sire. He has sired lambs with excellent growth and muscle. Take a look at his sons – Reau 626, 637, 640, that are also consigned. You will like what you see! RR at codon 171.



Suffolk Division

122**Reau 640**

NSIP ID # 690030-2018-000640

Born: 2/6/18

Suffolk

Ram

MSU 4137

Reau 614

Bunker Hill 3132

MSU 4132

MSU 5127

MSU 3101

EBVs					
BWT	WWT	PWWT	PEMD	PFAT	Carcass+
0.37	4.5	8.4	0.9	-3.1	162.7

640 is big, handsome hunk, but he is more than just a pretty boy when you look at his EBVs. He is in the top 10% of the breed for Carcass+. He has two well-known grandsires, MSU 4137 and MSU 4132.RR at Codon 171



Suffolk Division

123

Reau 626

NSIP ID # 690030-2018-000640

Born: 1/20/18

Suffolk

Ram

MSU 4137

Reau 614

Bunker Hill 3132

MSU 2124

Reau 598

MSU 5172

EBVs					
BWT	WWT	PWWT	PEMD	PFAT	Carcass+
0.76	5.7	10.2	-0.5	-3.4	157.2

This is a ram with a nice mix of EBVs from a power packed pedigree. You can read about his sire Reau 614 above. His dam, Reau 598 is straight MSU breeding and is sired by MSU 2124 used in MSU, Culham & Stevens, Geske, Scott and Reau flocks—a top sire that has made the rounds and is still going strong. 626 ranks in the top 5% of the breed for Post Weaning Weight and top 13% for Carcass+. RR at codon 171

124

Reau 637

NSIP ID # 690030-2018-000637

Born: 2/5/18

Suffolk

Ram

MSU 4137

Reau 614

Bunker Hill 3132

MSU 3103

MSU 5169

MSU 1105

EBVs					
BWT	WWT	PWWT	PEMD	PFAT	Carcass+
0.51	4.7	8.6	0.7	-3.5	162.8

It was a hard decision to let this ram go. He is a great looking package of growth and muscle. He is in the top 10% of the breed for Post Weaning Weight and Carcass+. The grand sires are a father/son combo that add a lot of punch to the pedigree. If you are looking for a stud ram that is a breed builder, 637 should be on your list. RR at codon 171.



Suffolk Division



Culham & Stevens

Alan Culham
5108 E Howell Road
Webberville, MI 48892

517-896-7378

culhamab@aol.com

www.culhamstevens.com

Lot
125-132

125 Culham & Stevens 1229

NSIP ID # 690025-2017-001229

Born: 1/17/17

Suffolk

Yearling Ram

MSU 4128

Culham & Stevens 1161

Culham & Stevens 956

MSU 3122

Culham & Stevens 1101

Bunkerhill Farm 2641

EBVs				
WWT	PWWT	PEMD	PFAT	Carcass+
5.2	10.0	0.3	-3.1	163.5

RR at codon 171. Used as a stud last fall. Will be using a son 1287 this year and his twin 1286 will be our featured ram lamb in this year's consignment. Sire sold to Linzy Jones of IA in last year's sale. On the Elite Proven Sires List.

126

Culham & Stevens 1239

NSIP ID # 690025-2017-001239

Born: 1/22/17

Suffolk

Yearling Ram

MSU 4128

Culham & Stevens 1161

Culham & Stevens 956

MSU 2124

Culham & Stevens 1149

Culham & Stevens 972

EBVs				
WWT	PWWT	PEMD	PFAT	Carcass+
4.2	8.8	0.3	-2.4	153.4

Have 29 progeny by this ram. One of the most moderate framed rams we have produced. An extremely soft made ram with lots of rib and depth of body. Carcass plus index hurt some by his sensible lean-ness EBV but that may be a good think when we address fleshing ability. Will keep many daughters in our flock for that reason. RR at codon 171. Will use 2018 son in our flock this fall as well as a maternal ½ brother. On the elite proven sire list.



C&S 1239
Lot 126

Suffolk Division

127

Culham & Stevens 1286

NSIP ID # 690025-2018-001286

Born: 1/12/18

Suffolk

Ram

Culham & Stevens 1161

Culham & Stevens 1229

Culham & Stevens 1101

MSU 2124

Culham & Stevens 1149

Culham & Stevens 972

EBVs				
WWT	PWWT	PEMD	PFAT	Carcass+
6.0	11.8	0.1	-3.0	168.8

Stud ram prospect. We will be using his twin brother. Top 1 % of the breed for growth, moderate in leanness yet still positive for muscle. Sire sells as yearling and maternal ½ brother is our other yearling. RR

128

Culham & Stevens 1284

NSIP ID # 690025-2018-001284

Born: 1/8/18

Suffolk

Ram

Bunkerhill Farm 3040

Culham & Stevens 1207

Culham & Stevens 939

MSU 8153

Culham & Stevens 0LB498

Culham & Stevens 8BR200

EBVs				
WWT	PWWT	PEMD	PFAT	Carcass+
6.3	11.4	-1.1	-2.3	151.7

Top 1% of the breed for growth, yet reasonable in leanness- maybe that is why his mother is eight years old and still in great shape. Sire recorded both the top weaning weight and post weaning weight EBVs (over 51,000 head) in the history of the Suffolk breed. RR at Codon 171

129

Culham & Stevens 1274

NSIP ID # 690025-2017-001274

Born: 12/18/17

Suffolk

Ram

MSU 3103

MSU 4128

MSU 2151

MSU 9181

Culham & Stevens 992

Culham & Stevens 8BR226

EBVs				
WWT	PWWT	PEMD	PFAT	Carcass+
5.1	10.3	-1.1	-1.8	143.0

Top 3% of the breed for growth. Another ram that is reasonable in leanness. A december born ram that should be ready to turn out early. RR at Codon 171

130

Culham & Stevens 1315

NSIP ID # 690025-2018-001315

Born: 2/14/18

Suffolk

Ram

Bunkerhill Farm 3040

Culham & Stevens 1207

Culham & Stevens 939

MSU 4128

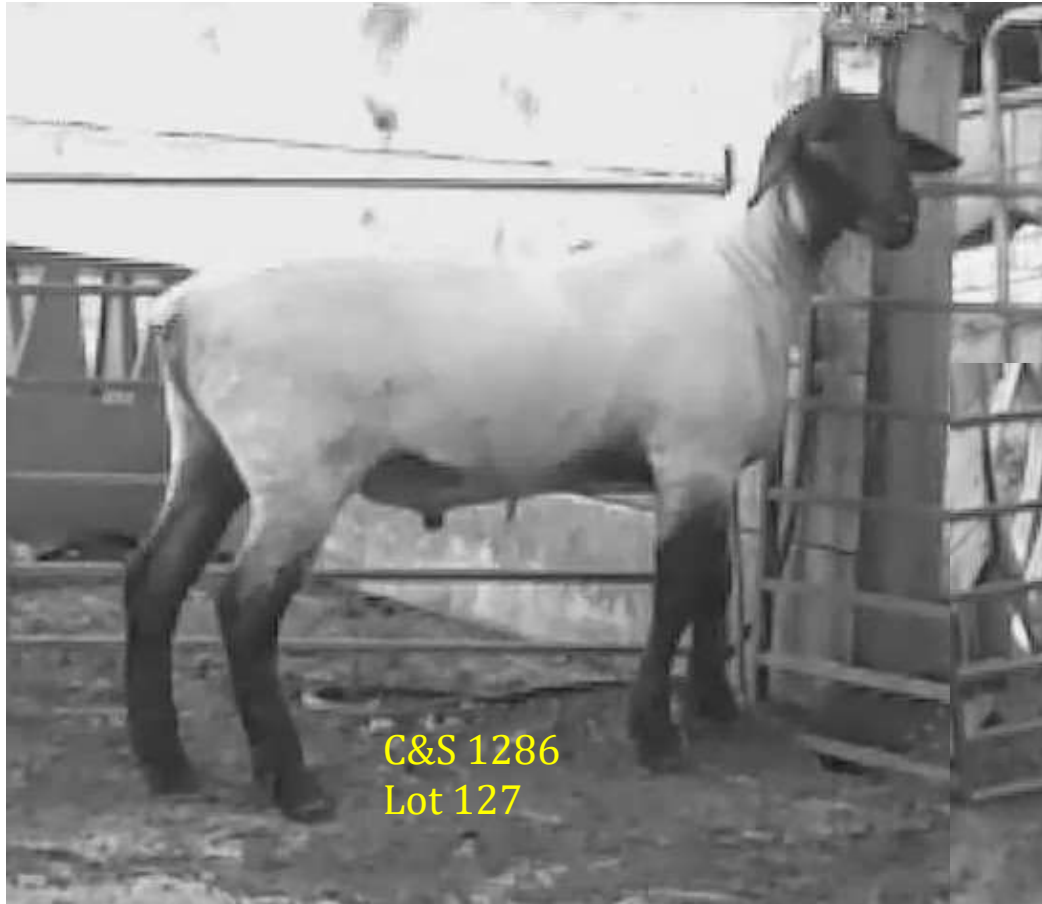
Culham & Stevens 1177

Culham & Stevens 972

EBVs				
WWT	PWWT	PEMD	PFAT	Carcass+
7.0	13.3	-0.9	-2.8	164.0

At time of submitting entires, 1315 was the top WW and PWWT ram in the entire 2018 Suffolk NSIP lamb crop. Have yet to turn in PWW and scan data so it may change by sale date. Type his 16-digit ID at www.nsipsearch.nsip.org to get his updated numbers prior to the sale. Sire recorded both the top weaning weight and post weaning weight EBVs (over 51,000 head) in the history of the Suffolk Breed. RR at Codon 171.

Suffolk Division



Suffolk Division

131

Culham & Stevens 1304

NSIP ID # 690025-2018-001304

Born: 1/25/18

Suffolk

Ewe

Bunkerhill Farm 3040

Culham & Stevens 1231

Culham & Stevens 1078

MSU 4128

Culham & Stevens 1160

Culham & Stevens 992

EBVs

WWT	PWWT	PEMD	PFAT	Carcass+
4.9	9.8	-1.4	-2.0	137.5

RR at codon 171

132

Culham & Stevens 1310

NSIP ID # 690025-2018-001310

Born: 2/9/18

Suffolk

Ewe

Bunkerhill Farm 3040

Culham & Stevens 1207

Culham & Stevens 939

MSU 4128

Culham & Stevens 1165

Culham & Stevens 965

EBVs

WWT	PWWT	PEMD	PFAT	Carcass+
7.6	14.2	-0.7	-3.2	172.2

Wow, I have debated until the entry submission deadline on whether to consign this one. Matt Beals said someone needs to consign that great foundation female, well here she is! Top Suffolk in the entire 2018 NSIP lamb crop for WW and PWW. Better yet, she would be the one you would choose by looking at them. Twin brother retained as a stud. Have yet to turn in PWW and scan data so it may change slightly by sale date. Type in her 16-digit ID at www.nsipsearch.nsip.org to get her updated numbers prior to the sale. Sire recorded both the top weaning weight and post weaning EBVs (over 51,000 head) in the history of the Suffolk breed. You could use her as a donor ewe and be at the top of the breed immediately. Never have I offered my top female for sale in 56 years of breeding Suffolk sheep but I am not getting any younger! RR at codon 171.



R & R Suffolks

Randy Hodges

4408 Jones Road

North Branch, MI 48461

Will Consign 2 ram lambs. Lot information, EBVs and pedigrees will be available by sale day.

**Lot
133-134**

Texel Division



West Virginia University

Scott Bowdridge
1194 Evansdale Dr. 2213 Ag Sciences Bldg.
Morgantown, WV 26506

304-293-2003

scott.bowdridge@gmail.com

**Lot
135-136**

135

WVU 8015

NSIP ID # 697009-2018-008015

Born: 2/4/18

Texel

Ram

Cambwell Laird

Portland Prairie 536

Portland Prairie 396

Eastern Texels 2564

Silvara Valley 1105

Silvara Valley 521

EBVs

BWT	WWT	PWWT	PEMD	PFAT	Carcass+
0.32	2.0	3.3	-0.5	-0.93	114.3

In our first consignment to the Center of the Nation Sale, we decided to bring our best. This son of Portland Prairie 536 has been a barn favorite since he was young. His combination of growth and correctness along with a proven pedigree make him a unique prospect. Fecal egg count in early June was 0 eggs/g after pasture exposure since early April. While we have been working to submit fecals for EBV generation, our post weaning fecals have been too low for analysis. No anthelmintic has been given. Updated EBVs including post weaning data will be available by phone and on sale day.





Texel Division

136

WVU 8060

NSIP ID # 697009-2018-008060

Born: 2/24/18

Texel

Ram

Cambwell Laird

Portland Prairie 536

Portland Prairie 396

Mountain Meadows 89339

Silvara Valley 1185

Pearsall MD06

EBVs					
BWT	WWT	PWWT	PEMD	PFAT	Carcass+
0.54	2.0	2.9	-0.9	-1.3	110.4

The youngest in our first contemporary group, 8060 is an intriguing young sire. A half-brother to 8015, they both are sired by the proven 536 with a post weaning weight EBV over 5 kg. This ram is square and correct without sacrificing the muscle Texel sheep are known for. Fecal egg count in early June was 0 eggs/g after pasture exposure since early April. While we have been working to submit fecals for EBV generation, our post weaning fecals have been too low for analysis. No anthelmintic has been given. Updated EBVs including post weaning data will be available by phone and on sale day.

Hampshire Division



University of Wisconsin-Madison Sheep Program

Todd Taylor

W4857 Meek Road

Arlington, WI 53911

608-332-4914

toddtaylor@wisc.edu

Lot
137-138

137 U of WI 17-112 RR

NSIP ID # 693003-2017-017112

Born: 9/13/17

Hampshire Fall Ram

Miller Hamps ML 0171

ML 0171

U of WI 14-032

U of WI 12-086

EBVs					
WWT	PWWT	PEMD	PFAT	CARC +	SRC\$
4.74	8.47	-1.24	-1.99	134.64	110.6

Not usually a fan of Sire/Daughter mating but this one worked pretty well. 14032 is the mother of 15103, the ram that Roembkes have been using for several years now. Interestingly, she has nothing but ram lambs. I plan to enter 17112's twin brother in Wooster. 8.47 PWWT Ranks him well into the top 1% of the breed for growth.

138 U of WI 18-030 RR

NSIP ID # 693003-2018-018030

Born: 1/24/18

Hampshire Ram

Rupnow RP 1079

Miller Hamps ML0171

U of WI 16009

U of WI 14044

EBVs					
WWT	PWWT	PEMD	PFAT	CARC +	SRC\$
2.57	4.89			115.92	106.45

I bought the Metro Hamps/Rupnow Hamps ram last year to see if we could put a bit more muscle on the Miller 0171 daughters. Scans just completed this week so results are not back yet from analysis. Watch for updates on this ram!

Hampshire Division



Helming Hampshires

Marlin D. Helming
2504 Hwy 392
Greeley, CO 80631

970-336-1613
mdhelming@msn.com

Lot
139-144

139 Helming 804

NSIP ID # 693007-2017-170804

Born: 2/4/17 **Hampshire** Yearling Ram

NDSU 11081

NDSU 15041

NDSU 133041
Roembke 122013

Helming H618

Helming H422

EBVs					
WWT	PWWT	PEMD	PFAT	CARC +	SRC\$
2.4	5.0	0.4	-1.3	132.5	108.3

Single, RR. Certified NSIP Carcass Plus sire!! Carcass + and PWWT are in the top 15. This sire is a Proven Sire!

140 Helming 810

NSIP ID # 693007-2017-170810

Born: 2/10/17 **Hampshire** Yearling Ram

NDSU 11081

NDSU 15041

NDSU 133041
Roembke 122013

Helming H603

Helming H459

EBVs					
WWT	PWWT	PEMD	PFAT	CARC +	SRC\$
4.1	7.9	-1.1	-2.6	135.6	112.4

Twinn, RR. Certified Carcass Plus Sire! His Carcass+ is easily in the top 10% and has the highest PWWT on the charts. He is also #22 on the Elite Proven Sires report.

141 Helming 864

NSIP ID # 693007-2018-180864

Born: 2/9/18 **Hampshire** Ram

NDSU 11081

NDSU 15041

NDSU 133041
Roembke 122013

Helming 709

Helming H520

EBVs					
WWT	PWWT	PEMD	PFAT	CARC +	SRC\$
3.31	6.1	*	*	134.1	110.13

Twin, RR. This ram has a carcass plus and MWWT rating in the top 10% of the breed for 2018 offspring. Sire is a proven sire.

Hampshire Division

142**Helming 863**

NSIP ID # 693007-2018-180863

Born: 2/8/18

Hampshire Ram

NDSU 11081

NDSU 15041

NDSU 133041

Roembke 1220I3

Helming 683

Helming H458

EBVs					
WWT	PWWT	PEMD	PFAT	CARC +	SRC\$
3.2	6.13	*	*	136.9	110.92

Twinn, RR. Another ram lamb with a carcass+ and PWWT in the top 10%.
Sire is a proven sire.

143**Helming 858**

NSIP ID # 693007-2018-180858

Born: 2/7/18

Hampshire

Ram

NDSU 11081

NDSU 15041

NDSU 133041

Roembke 1220I3

Helming H613

Helming H549

EBVs					
WWT	PWWT	PEMD	PFAT	CARC +	SRC\$
3.4	7.2	-0.3	-1.9	137.6	111

Twin, RR. This is a fast growing, classic open face Hampshire ram lamb.
He will add pounds per lamb and carcass quality to the next crop of lambs.
His carcass plus is in the top 10% and his PWWT is in the top 1% of the
breed, out of a proven sire!

144**Helming 866**

NSIP ID # 693007-2018-180866

Born: 2/9/18

Hampshire

Ram

NDSU 11081

NDSU 15041

NDSU 133041

Roembke 1220I3

Helming 668

Helming H329

EBVs					
WWT	PWWT	PEMD	PFAT	CARC +	SRC\$
3.2	6.3	-0.1	-2.1	137.5	110.9

Twin, RR. This ram lamb's carcass plus is in the top 10% of the breed and
PWWT is in the top 5%. Another ram that will add pounds per lamb at
weaning with a quality carcass. Sire is a proven sire!



Roembke Hampshires

Mark & Richard Roembke
3504 Country Aire Drive
Cedarburg, WI 53012

262-707-0032

mjrhamps@hotmail.com

Lot
145-148

145 **Roembke E1739**

NSIP ID # 693004-2017-1739E2

Born: 3/5/17

Hampshire Yearling Ram

U of WI 15103 Sg

Roembke U1634TW

Roembke T1511TW

Tw, RR

Roembke C1019TW

Roembke S1427Sg

Roembke N1334TW

EBVs

WWT	PWWT	PEMD	PFAT	CARC +	SRC\$
1.14	2.51	1.41	-0.71	130.4	108.4

A top PEMD ram sired by #1 Proven sire for PEMD, Roembke U1634.
From a top proven maternal line with MWWT in top 10% (MWWT = 0.482). He's in the top 2% for PEMD and top 15% for Carcass+.



Hampshire Division

146

Roembke M1835

NSIP ID # 693004-2018—1835M2

Born: 3/9/18

Hampshire

Ram

U of WI 15103 Sg

Roembke U1707TW

Roembke N1334 TW

Tw, RR

U of WI 11031 Sg

Roembke T1537TW

Roembke N1304TW

EBVs

WWT	PWWT	PEMD	PFAT	CARC +	SRC\$
5.23	3.0	1.0	-2.2	145.7	110.9

Top 10% ram for WWT, PWWT and PEMD putting him in to the top tier for Carcass Plus. Nothing flashy, just solid production in this guy. He will make you \$\$\$!

Roembke V1832
Lot 147



148**Roembke V1813**

NSIP ID # 693004-2018-1813V2

Born: 2/26/18

Hampshire

Ewe

Roembke G1629Tw

Roembke H1733Sg

Roembke T1511Tw

Tw, RR

U of WI 15103 Sg

Roembke U1627Sg

Roembke N1325 Sg

EBVs					
WWT	PWWT	PEMD	PFAT	CARC +	SRC\$
2.65	4.61	0.02	-0.57	124.8	108.5

This ewe ranks in the top 15% for WWT and top 20% for PWWT and Carcass Plus.



Roembke V1813
Lot 148





Hayden's Hamps

Hayden Taylor
W4857 Meek Road
Arlington, WI 53911

608-332-4914

toddtaylor@wisc.edu

Lot
149-153

149 Hayden's Hamps 17-09 QR

NSIP ID # 693014-2017-001709

Born: 1/13/17 **Hampshire** Yearling Ram

ISU 14-118

U of WI 15-097

U of WI 14-007

Stevens 6118ST

Hayden's Hamps 10-208

Hayden's Hamps 9166

EBVs					
WWT	PWWT	PEMD	PFAT	CARC +	SRC\$
1.64	3.63	-0.77	-0.96	111.7	104.8

We used this ram some last year on some younger ewes. He was also one of Hayden's show rams. We have a son we will keep and grow out.

150 Hayden's Hamps 18-68 QR

NSIP ID # 693014-2018-001868

Born: 2/26/18 **Hampshire** Ram

SDSU 3043

SDSU 5068

SDSU 90138

Stevens 6118ST

Hayden's Hamps 10-208

Hayden's Hamps 9166

EBVs					
WWT	PWWT	PEMD	PFAT	CARC +	SRC\$
0.2	0.12	0.21	-0.77	106.51	102.19

Out of the same ewe as the Yearling Ram entry (lot 149). She has been a consistent producer for several years.

Hampshire Division

151 Hayden's Hamps 17-16 _R

NSIP ID # 693014-2017-001716

Born: 1/13/17

Hampshire Yearling Ewe

Beckmier

Double F DF1283

U of WI 10-025

U of WI 04-078

EBVs					
WWT	PWWT	PEMD	PFAT	CARC +	SRC\$
2.04	3.64	-0.79	-2.77	119.7	99.83

Yearling ewe that did a great job raising a single ram lamb out of the 1709 yearling ram above. We will keep him and grow him out so we feel it is ok to offer both his sire and dam. This ewe's dam is 8 years old out of Double F 1283 "Chester" that was a staple in the UW Madison flock for many years.

152 Hayden's Hamps 18-36 _R

NSIP ID # 693014-2018-001836

Born: 1/31/18

Hampshire Ewe

SDSU 3043

SDSU 5068

SDSU 90138

Ott 13 thru Metro Hamps

Hayden's Hamps 15-44

Rupnow RUP931

EBVs					
WWT	PWWT	PEMD	PFAT	CARC +	SRC\$
0.23	0.21	0.92	-0.29	113.1	101.2

I think this young ewe has potential. Has some really nice carcass balance. Hayden's been building his Hampshire flock as part of his FFA SAE and is really learning a lot about using EBVs to help make selection decisions!

153 Hayden's Hamps 18-38 _R

NSIP ID # 693014-2018-001838

Born: 2/1/18

Hampshire

Ewe

SDSU 3043

SDSU 5068

SDSU 90138

Hayden's Hamps 12349

Hayden's Hamps 1467

Hayden's Hamps 12343

EBVs					
WWT	PWWT	PEMD	PFAT	CARC +	SRC\$
1.1	2.17	0.06	-0.98	114.9	105.4

Like the balance of EBVs on this one. They all at least go in the right direction. Dam of this ewe has been a very good mother.



Iowa State University

Trey Jackson
806 Stange Rd. 1221 Kildee Hall
Ames, IA 50011
515-897-9766
treyj@iastate.edu

Lot
154-158

154 ISU F007

NSIP ID # 693005-2018 18F007

Born: 1/20/18 **Hampshire** Ram

U of WI 15-103

Roembke 164502

Roembke 1236S1

ISU B133

ISU 16-0011

ISU A129

EBVs					
BWT	WWT	PWWT	PEMD	PFAT	Carcass+
0.25	2.3	4.8	0.8	-2.6	141.5

We commit to bringing our best rams to Spencer every year and when this guy was born, we knew he was going. Not only is he a genetic outlier, he's also a physical specimen. The highest carcass ram ISU has ever consigned is large patterned, tall shouldered and ties into a wide flat top. On the move, he's one of our best structured rams that can add value to any producer from commercial to seedstock. This guy should have a lot of friends on sale day. F007 is a twin, RR in the top 2% for Carcass+, top 10% for PEMD and top 15% for PWWT.

155 ISU F009

NSIP ID # 693005-2018 18F009

Born: 1/20/18 **Hampshire** Ram

ISU B133

ISU D022

ISU A134

ISU 7104

ISU 11A129

ISU 2062

EBVs					
BWT	WWT	PWWT	PEMD	PFAT	Carcass+
0.44	2.1	3.7	-0.2	-1.7	122.4

A nice outlined, powerful ram that brings a ton of bone and structure to the table. He is out of one of our old consistent producing ewes. This guy will add carcass traits and growth to most any flock without sacrificing look. Added bonus, this guy and his triplet siblings all grew like this. F009 is a triplet, RR and in the top 20% for Carcass+.

156 ISU F027

NSIP ID # 693005-2018 18F027

Born: 1/27/18 **Hampshire** Ram

ISU B133

ISU D022

ISU A134

SDSU 144185

SDSU 16602

SDSU 90098

EBVs					
BWT	WWT	PWWT	PEMD	PFAT	Carcass+
0.45	2.8	5.2	-0.7	-1.7	122.9

A few years ago we took the opportunity to tie in to SDSU's flock and couldn't be happier with this guy. He is a great commercial ram that is big footed, bold ribbed and rugged. He combines the best ewe family at ISU with consistent production traits that SDSU offers. He has a little different pedigree that needs to be looked up on sale day. F027 is a single, RR in the top 15% on PWWT and top 20% for Carcass_

Hampshire Division

157 ISU F034

NSIP ID # 693005-2018 18F034

Born: 2/5/18 **Hampshire** Ram

U of WI 15-103

Roembke 164502

Roembke 1236S1

ISU 16 D022

ISU 17E035

ISU 7151

EBVs					
BWT	WWT	PWWT	PEMD	PFAT	Carcass+
0.58	3.2	6.1	-1.5	-1.7	118.4

Typically we offer older rams on this sale however we felt this guy needed to go. He's the highest growth ram that we are offering and goes back to one of the best ewe families on the farm. His granddam gave us 11 years of producing high performing twins and he reminds us of her. He is a longer profiling, big ribbed ram that is level and functional. This is a great opportunity to tie into one that is consistent and fast growing. F034 is a single out of a ewe lamb, QR and in the top 10% for PWWT.

158 ISU F036

NSIP ID # 693005-2018 18F036

Born: 2/6/18 **Hampshire** Ram

ISU B133

ISU D022

ISU A134

ISU A109

ISU 150027

ISU 829

EBVs					
BWT	WWT	PWWT	PEMD	PFAT	Carcass+
0.51	2.1	3.7	-0.5	-2.0	120.9

ISU's youngest consignment is a bit green right now but he is one we have a lot of faith in. Genetically, we like his numbers for growth and carcass+ and when we study this guy he is a large outlined ram with plenty of look and function. He reads fast growing and powerful just like his genetics suggest. Here is one you can buy with confidence. F036 is a twin and QR.



South Dakota State University

**Lot
159-166**

Box 2170 N Campus Drive
Brookings, SD 57006
208-661-4587
karolynn.marsan@sdstate.edu

159 SDSU 8055 RR

NSIP ID # 693006-2018-188055

Born: 2/8/18 **Hampshire** Ram

Barley Legal

Wheaton 6-189

Wheaton 8-075

SDSU 2-080

SDSU 3173

SDSU 90170

EBVs					
BWT	WWT	PWWT	PEMD	PFAT	Carcass+
0.34	1.0	2.3	-0.5	-1.6	111.6

Adj WWT: 62, ADJ 120dwt: 124. A ram out of our stud Wheaton 6-189, this ram is built right in all the right places. He's one of very few sons we're offering out of 6-189 this year.

Hampshire Division

160 SDSU 8047 RR

NSIP ID # 693006-2018-188047

Born: 2/6/18 Hampshire Ram

Barley Legal

Wheaton 6-189

Wheaton 8-075

SDSU 3043 (wheaton)

SDSU 6094

SDSU 90087

EBVs					
BWT	WWT	PWWT	PEMD	PFAT	Carcass+
0.0	0.2	1.3	-1.2	0.5	89.2

Adj WWT: 59, ADJ 120dwt: 150. We love what our Wheaton 6-189 stud has done on our 3043 daughters and this guy is no exception. A good frame ram that is patterned right and sound on his feet and legs.

161 SDSU 8033 RR

NSIP ID # 693006-2018-188033

Born: 2/5/18 Hampshire Ram

Wheaton 2-080

SDSU 3043

SDSU 90099

Wheaton 2-080

SDSU 3121

SDSU 80024

EBVs					
BWT	WWT	PWWT	PEMD	PFAT	Carcass+
-0.12	-0.5	-0.7	-0.5	1.0	86.2

Adj WWT: 66, ADJ 120dwt: 120. A more moderate framed ram out of our 3043 stud. He sets down on a big foot and good bone. This ram is going to make some great lambs.

162 SDSU 8031 RR

NSIP ID # 693006-2018-188031

Born: 2/5/18 Hampshire Ram

SDSU 3043 (Wheaton)

SDSU 4185

SDSU 00053

SDSU 3043 (Wheaton)

SDSU 4177

SDSU 2088

EBVs					
BWT	WWT	PWWT	PEMD	PFAT	Carcass+
-0.36	-0.6	-0.1	-0.1	0.9	94.1

Adj WWT: 54, ADJ 120dwt: 137. A well patterned ram with a lot of growth and the foundation to boot.

Hampshire Division

163 **SDSU 7010 RR**

NSIP ID # 693006-2017-177010

Born: 2/2/17 **Hampshire** Yearling Ewe

Barley Legal

Wheaton 6-189

Wheaton 8-075

Wheaton 2-080

SDSU 3170

SDSU 00088

EBVs					
BWT	WWT	PWWT	PEMD	PFAT	Carcass+
-0.23	-0.6	0.3	0.6	-0.6	108.8

Adj WWT: 54, ADJ 120dwt: 96. Originally kept as a replacement, we decided she ws too good not to sell. A nice solid built sound ewe with a bold rib shape and long body.

164 **SDSU 7130 RR**

NSIP ID # 693006-2017-177130

Born: 5/17/17 **Hampshire** Yearling Ewe

Barley Legal

Wheaton 6-189

Wheaton 8-075

SDSU 3043 (Wheaton)

SDSU 6164

SDSU 00141

EBVs					
BWT	WWT	PWWT	PEMD	PFAT	Carcass+
-0.18	-0.3	0.9	-0.4	0.2	96.6

Adj WWT: 37, ADJ 120dwt: 166. This ewe was slow to start but hit her own last fall. She's patterned right and has the genetics to back it up. She is going to make a great ewe for someone. She is just that good.

165 **SDSU 8026 RR**

NSIP ID # 693006-2018-188026

Born: 2/4/18 **Hampshire** Ewe

Wheaton 2-080

SDSU 3043

SDSU 90099

SDSU 4227

SDSU 6188

SDSU 5115

EBVs					
BWT	WWT	PWWT	PEMD	PFAT	Carcass+
-0.14	-1.4	-2.5	0.1	0.6	86.3

Adj WWT: 40, ADJ 120dwt: 123. This ewe lamb wsn't ready for our May production sale but she sure is now. She's well patterned with a great genetic foundation.

166 **SDSU 8042 RR**

NSIP ID # 693006-2018-188042

Born: 2/3/18 **Hampshire** Ewe

SDSU 3043 (Wheaton)

SDSU 4185

SDSU 00053

SDSU 1045

SDSU 3179

SDSU 90051

EBVs					
BWT	WWT	PWWT	PEMD	PFAT	Carcass+
-0.53	-0.8	-0.8	0.4	1.7	92.7

Adj WWT: 62, ADJ 120dwt: 145. These ewes are directly out of our replacement pen. She's got a long body and a bold rib. She catches the eye of everyone who comes through the barn.

Hampshire Division



Drewry Farms

Don Drewry
3105 250th St E
Farmington, MN 55024

651-894-3466

drewrydonald@gmail.com

www.drewryclublambs.com

**Lot
167-169**

167 Drewry 18370

NSIP ID # 693015-2018-188370

Born: 1/15/18

Hampshire Ram

Houghton 11-1147

Houghton 6057-16

Houghton 11-1540

SDSU 111070

SDSU 4120

SDSU 111045

EBVs					
BWT	WWT	PWWT	PEMD	PFAT	Carcass+
0.16	2.77	5.62	0.91	-2.32	145.98

1837- Big boned, fast growing ram. Probably won't be the biggest yearling despite his high PWWT EBV. Dam is ewe we bought at this sale in 2014. We sold her daughter to ISU 2 years ago at this sale. We're going to retain his twin sister in our flock. From her phenotype, I keep thinking she's sired by one of our club lamb style rams. But combining that with her 141.11 carcass+ index, she's a keeper. Based on 2017's last percentile report, this guy's carcass+ would have put him in the top 1% of the breed.



**3-Down Buck, Sire of
Lots 167-169**

3-Down Buck was our lead ram in 2017. He came from Houghton Hampshires, one of the oldest Hampshire flocks in the country. Dean had planned on enrolling into NSIP, I had the chance to go through his raw data and get my choice out of his rams. Like a 3-Down Buck that can run, catch and block, 3-Down Buck can do it all. I compared his raw data to SaberMetric and Geek, our 2 very high indexing yearling rams we sold in 2016 and 2017. These rams were on full feed from birth to being scanned. 3-Down was faster growing, had a bigger loin eye and was within 1 pound of Geek (our high indexing ram from the 2017 sale). I also think his phenotype is excellent. All of our entries in the sale are sired by 3-Down Buck.

Hampshire Division

168 Drewry 18373

NSIP ID # 693015-2018-188373

Born: 12/30/18 **Hampshire** Ram

Houghton 11-1147

Houghton 6057-16

Houghton 11-1540

Miller 0-171

U of WI 15-047

U of WI 11-031

EBVs					
BWT	WWT	PWWT	PEMD	PFAT	Carcass+
0.32	3.41	6.57	0.2	-2.2	142.24

18373- Big boned, fast growing ram. To improve our links to the NSIP pool, we bought 5 ewes from U of WI. All are sired by their Miller ram. All have high carcass+ indexes having high PEMD values and above average growth. We had some bad luck with 15-047s first lambs so he's a pleasant surprise. These daughters have performed consistently for me and first results on 3-Down Buck is that he's the most consistent Hampshire performance buck I've used. (Time will tell if he can match Sven a ram that many of the Polypay breeders still remember that we had for consistency). The fact that I'm willing to compare 3-Down Buck to Sven means he's exceeded my expectations. It's been really tempting to keep this ram, but so many of my registered ewes trace the U of WI Miller ram we're going to sell him.



169 Drewry 18380

NSIP ID # 693015-2018-188380

Born: 2/2/18 **Hampshire** Ewe

Houghton 11-1147

Houghton 6057-16

Houghton 11-1540

Miller 0-171

U of WI 14033

U of WI 11-031

EBVs					
BWT	WWT	PWWT	PEMD	PFAT	Carcass+
0.35	2.07	3.14	0.31	1.62	126.06

I've retained most of the daughters out of the U of WI ewes I bought to improve our links. Now we can start offering their daughters for sale. Look at her numbers as she's young and looks very feminine.



Shropshire Division



Mapleton Mynd Shropshires

Cody Hiemke
1773 Koshkonong Road
Stoughton, WI 53589
415-302-8038
cjhiemke@gmail.com

Lot
170-171

170 Mapleton Mynd 1805 RR

NSIP ID # 695003-2018-MM1805

Born: 2/16/18 **Shropshire** Ram

MM 1417

MM 1727

HF 2010

MM 2007

MM 1419

MM 1151

EBVs					
BWT	WWT	PWWT	PEMD	PFAT	Carcass+
0.12	2.49	3.95	1.73	-1.97	147.3

Pre-scanning, 1805's EBVs are top 10% for PEMD, SRC\$ and Carcass +.
Top 25% for growth. Visit
www.facebook.com/MapletonMyndShropshires/ to find videos of our
sale entries.

171 Mapleton Mynd 1806 QR

NSIP ID # 695003-2018-MM1806

Born: 2/17/18 **Shropshire** Ram

MM 1417

MM 1727

HF 2010

FG 5815

HF 2063

HF 1010

EBVs					
BWT	WWT	PWWT	PEMD	PFAT	Carcass+
0.23	3.05	4.88	2.05	-2.75	158.7

We're going to call this ram "Little Jerry Sorenson". Not because he's small, but because he's soggy and "Big Jerry Sorenson" has an appreciation for our soggy Shropshires. This guy also has great EBV balance. Top 10% for SRC\$, Carcass+, WWT and PEMD. Top 15% PWWT. Top 25% MWWT. This would be a very good option to make that F1 ShrolyPay ewe replacement.

Shropshire Division



Lot 170
Mapleton Mynd 1805



Lot 171
Mapleton Mynd 1806



Southdown Division



Hannah Taylor Southdowns

Hannah Taylor
W7460 Meek Road
Arlington, WI 53911

608-332-4914

taylorsheep@yahoo.com

Lot
172-173

172

Taylor 17-F03 RR

NSIP ID # 692001-2017-017F03

Born: 10/8/17 **Shropshire** Fall Ram

Fastert 155

Formo 6047

Robinson 11Y
MB 12F-1972 "Vision"

MB Genetics 14-1263

MB 12-6273A

EBVs					
BWT	WWT	PWWT	PEMD	PFAT	Carcass+
0.06	0.3	0.8	0.5	-1.0	113

17-F03's EBVs are based on Pedigree EBVs.

Hannah has the only Southdown flock enrolled in NSIP! I really like this ram and think he would work well crossed on whiteface ewes to produce heavy, muscular lambs at lighter weights. If market lambs at young ages, I think these rams will work very well.

173

Taylor 18-57 QR

NSIP ID # 692001-2018-001857

Born: 2/18/18 **Shropshire** Ram

Fastert 155

Formo 6047

Robinson 11Y
Bowman 1526

Taylor 16-490

MB 1-8EMA

EBVs					
BWT	WWT	PWWT	PEMD	PFAT	Carcass+
0.12	0.7	0.9	0.4	-0.8	112.4

Again a moderate framed ram with great muscle shape and one of the faster growing rams in this year's crop.

Siremax Division



Siremax

Cindy Wolf & Kelley O'Neill
29182 Hartwood Drive
Rushford, MN 55971

507-450-5453

wolfx006@umn.edu

Lot
174-175

174

17053

NSIP ID # CT00SM-2017-B17053

Born: 4/15/17

Siremax

Yearling Ram

B15087

B15153

EBVs					
BWT	WWT	PWWT	PEMD	PFAT	Carcass+
0.51	12.9	19.6	2.1	-0.8	226.6

This is an extremely well built, heavily muscled yearling ram that we selected to use in our own flock in the fall of 2017. His EBVs are in the top percentages of our flock.

175

17050

NSIP ID # CT00SM-2017-B17050

Born: 4/15/17

Siremax

Yearling Ram

D 15080

090514

EBVs					
BWT	WWT	PWWT	PEMD	PFAT	Carcass+
0.46	11.8	18.0	2.7	0.6	218.2

The aged dam of this yearling ram has consistently produced high indexing lambs. Her own carcass + index is still over 200 at 9 years of age. He offers an unusual combination of strong EBVs for both muscle and depth. He is 81% higher than the flock's average for EMD and 13% higher than flock's average for post weaning growth.

Shearwell Data

www.shearwell.com

Quality Tags, Software, Readers & Crates

SET Sheep Tag *USDA / Scrapie approved tags*

- Visual and Electronic (RFID)
- Excellent retention rate
- Same applicator applies both



Shearwell Stock Recorder *Two tools in one!*

- Tag reader and efficient data entry
- Download to PC and run extensive reports
- Simple touch screen operation
- Comes with our Farm Management software



**Shearwell
Data**

Animal Identification
& Management Systems

Contact us today: **Mobile 320-760-4696** dan.persons@shearwell.com



NSIP

National Sheep
Improvement
PROGRAM

America's
GENETIC FOUNDATION
FOR A PROFITABLE

Sheep
INDUSTRY